



Headquarters  
GMT GLOBAL INC.  
No. 357, Sec. 1, Yaofeng Rd., Puxin Township, Changhua County 51344, Taiwan  
TEL : +886-4-8282825  
FAX : +886-4-8282228  
E-mail : sales@gmt.tw

European Subsidiary  
GMT Europ GmbH  
Wilhelm-Busch-Str.4 26655 Westerstede, Germany  
TEL : +49 (0) 4488 761746-0  
FAX : +49 (0) 4488 520 30 49  
Email : sales@gmteurope.de

China Subsidiary  
Dongguan Ding Qi Intelligent Automation Technology Ltd.  
No.8 Factory ,SHUI-BIAN Industrial Zone, Hengli Town, Dongguan City, Guangdong  
Guangdong Province,China  
Email : dst@gmtglobalinc.com

 [www.gmt.tw](http://www.gmt.tw)  
[www.gmtglobalinc.com](http://www.gmtglobalinc.com)

2019.07

AC Design 04-27071159



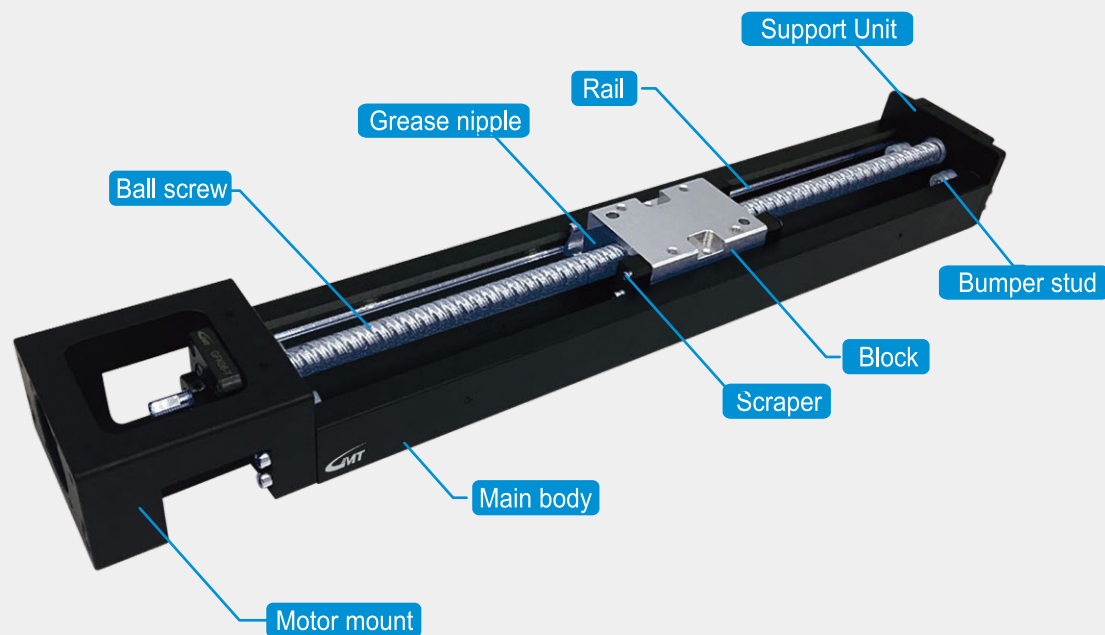
## Linear Actuators

	To improve products and services, we reserve the right to change product engineering. The catalogue is subject to addition, revision and deletion without notice. Please visit  website, or contact the regional sales for the latest information.	
	<b>Summary</b>	<ul style="list-style-type: none"> <li>Features &amp; Structures P.2</li> <li>Model Selection Condition &amp; Model Selection Steps &amp; Features Explanation P.3</li> <li>Model Explanation &amp; Accuracy Grade &amp; Maximum Speed Limit &amp; Loading Specifications P.4 ~P.13</li> </ul>
<b>Specifications</b>	GK□2040 Specifications	P.14
	GK□2040 w / Dustproof Cover Specifications	P.15
	GK□2650 Specifications	P.16
	GK□2650 w / Dustproof Cover Specifications	P.17
	GK□3060 Specifications	P.18
	GK□3060 w / Dustproof Cover Specifications	P.19
	GK□4580 Specifications	P.20
	GK□4580 w / Dustproof Cover Specifications	P.21
	GK□3065 Specifications	P.22
	GK□3065 w / Dustproof Cover Specifications	P.23
	GK□4270 Specifications	P.24
	GK□4270 w / Dustproof Cover Specifications	P.25
	GK□5496 Specifications	P.26
	GK□5496 w / Dustproof Cover Specifications	P.27
	GK□60110 Specifications	P.28
GK□60110 w / Dustproof Cover Specifications	P.29	
<b>Accessories</b>	Introduction	P.30
	Motor Mount Bases and Adapt Mountings	P.31 ~ P.32
	Coupling Selection	P.46 ~ P.47
	Sensor Set Installation Diagrams	P.48
	Sensor Sets	P.49 ~ P.50
	GK□ Series Dustproof Covers	P.51
	GK□ Series Sensor Set Protection Covers	P.52
<b>Technical Information</b>	Speed Calculation	P.53
	Life Calculation	P.54
	Test Method	P.55 ~ P.57
	Order Form	P.58 ~ P.59

## Features

- ⊙ Guiding type - Gothic arch - groove rail with linear ball bearing formed to a strong structure.
- ⊙ Drive Type - Ball screw feeding is equipped high and easy changeable transmission, as well as its high precision and life utility feature.
- ⊙ Accuracy of Precision Type (P) and Standard (N) Type combined to various rail length for options fit to needs.
- ⊙ Lightweight design - GKA Lightweight design from aluminum alloy material to save transportation budget and inconvenience.
- ⊙ High rigidity design - GKS High rigidity design from carbon steel material to strengthen structural rigidity.

## Structure Introduction



## Model Selection Condition

- ① Main unit (P.14 ~ P.29) → ② Motor mount adaptings (P.31 ~ P.45) →
- ③ Couplings (P.46 ~ P.47) → ④ Sensor sets (P.49 ~ P.50) → ⑤ Dustproof covers (P.51) →
- ⑥ Sensor set protection covers (P.52)

## Model Selection Steps

### 1 Basic needs

- ⊙ Available stroke
- ⊙ Space limitation (length, Width, Height)
- ⊙ Mount type (Horizontal, Vertical, Side-hanging)
- ⊙ Gravity loading position
- ⊙ Loading center of gravity location operation request (lead, Speed-acceleration / Deceleration, Frequency of use)
- ⊙ Application environment (High temperature, Vibration, Greasy, Corrodent environment)

### 2 Accuracy needs

- ⊙ Positioning accuracy
- ⊙ Repeatability accuracy
- ⊙ Movement Parallelism

### 3 Axis numbers

- ⊙ Single axis
- ⊙ Double axes
- ⊙ Multi axes
- ⊙ Special combination

### 4 Motor options

- ⊙ AC Servo motors
- ⊙ Stepper motors  
**(option on request)**

### 5 Motor loading

- ⊙ Max. speed
- ⊙ Motor resolution
- ⊙ Motor torque

## GKA & GKS Characteristic

	GKA(Aluminum)	GKS(Steel)
Accuracy	Precision	Precision
Load capacity	Medium loading	Heavy loading
Weight	Light	Heavy
Rigidity	Aluminum base with standard performance	Steel base with good rigidity
Clean	Standard	Standard
Anti-corrosion	Standard	Standard
Feeding type	Ball screw	Ball screw
Drive to ball screw	Direct	Direct
Dustproof cover	<b>(Option on request)</b>	<b>(Option on request)</b>
Lock type	Bottom to up	Bottom to up

Model Description

# GK series

Block	Drive Type	Accuracy Level	Dustproof Cover	Sensor Rail Sets (Optional)	Sensor Set Protection Covers
1 Standard block	2 Ball screw	P Precision N Standard	C W/Dustproof cover X N/Dustproof cover	G SG sensor rail sets (no sensor) P SP sensor rail sets (sensor*3) X No sensor rail sets	X No sensor protection covers

**GKA 2040 - 80 - 1 2 P - P2 - C P X X X**

Model	Size (H*W mm)	Travel Stroke (mm)	Ball screw lead	Motor Adapt Mountings (Optional)	couplings (Optional)
GKA Aluminum alloy	2040 20*40	30 ~ 80	P2 · P6 : 0602 · 0606 mm	Pls refer to P.31~P.45	Pls refer to P.46~P.47
	2650 26*50	60 · 110 · 160 · 210	P2 · P5 : 0802 · 0805 mm		
GKS Carbon steel	3060 30*60	50 · 100 · 200 · 300 · 400 · 500	P5 · P10 : 1005 · 1010 mm	Pls refer to P.31~P.45	Pls refer to P.46~P.47
	4580 45*80	200 · 300 · 400 · 500 · 600 · 700 · 800	P10 : 1610 mm		

© Optional Accessories : Motor adapt mountings 、 couplings 、 sensor rail sets 、 dustproof covers are options referred to P. 30~P. 51 ◦

Model Description

# GK series

Block	Drive Type	Accuracy Level	Dustproof Cover	Sensor Rail Sets (Optional)	Sensor Set Protection Covers (Optional)
1 Standard block	2 Ball screw	P Precision N Standard	C W/Dustproof cover X N/Dustproof Cover	G SG sensor rail sets (no sensor) P SP sensor rail sets (sensor*3) X No sensor rail sets	S CS (W/Sensor set protection covers) X No sensor set protection covers

**GKA 3065 - 67 - 1 2 P - P5 - C X X X X**

Model	Size (H*Wmm)	Travel Stroke (mm)	Ball screw lead	Motor Adapt Mountings (Optional)	Couplings (Optional)
GKA Aluminum alloy	3065 30*65	67 · 117 · 167 · 217	P5 : 1005 mm	Pls refer to P.31~P.45	Pls refer to P.46~P.47
	4270 42*70	63 · 113 · 213 · 313 · 413 · 513	P5 · P10 : 1205 · 1210 mm		
GKS Carbon steel	5496 54*96	229 · 329 · 429 · 529 · 629 · 829	P10 · P20 : 1510 · 1520 mm	Pls refer to P.31~P.45	Pls refer to P.46~P.47
	60110 60*110	849 · 949 · 1049 · 1149 · 1249	P20 : 2020 mm		

© Optional Accessories : Motor adapt mountings 、 couplings 、 sensor rail sets 、 dustproof covers 、 sensor set protection covers are options referred to P. 30~P. 52 ◦

### Accuracy Grade

(Unit : mm)

Model	Stroke	Repeatability Accuracy		Positioning Accuracy		Movement Paralleism		Max. Torque(N · cm)	
		Standard	Precision	Standard	Precision	Standard	Precision	Standard	Precision
GK□2040	30	±0.01	±0.003	0.06	0.02	0.025	0.01	0.5	1.2
	80								
GK□2650	60	±0.01	±0.003	0.06	0.02	0.025	0.01	1.5	3
	110								
	160								
	210								
GK□3060	50	±0.01	±0.003	0.06	0.02	0.025	0.01	2	4
	100								
	200								
	300			0.10	0.025	0.035	0.015		
	400								
	500								
GK□4580	200	±0.01	±0.003	0.10	0.025	0.035	0.015	10	12
	300								
	400								
	500								
	600		0.15	0.03	0.04	0.02	15		
	700								
	800								

### Accuracy Grade

(Unit : mm)

Model	Stroke	Repeatability Accuracy		Positioning Accuracy		Movement Paralleism		Max. Torque(N · cm)				
		Standard	Precision	Standard	Precision	Standard	Precision	Standard	Precision			
GK□3065	67	±0.01	±0.003	0.05	0.02	0.02	0.01	2	4			
	117											
	167											
	217											
GK□4270	63	±0.01	±0.003	0.05	0.02	0.02	0.01	7	15			
	113											
	213			0.10	0.025	0.03	0.015					
	313											
	413											
	513											
GK□5496	229	±0.01	±0.003	0.10	0.025	0.03	0.015	10	15			
	329											
	429											
	529			0.15	0.03	0.04	0.02					
	629											
	829											
	849									0.04	0.05	0.025
949												
GK□60110	1049	±0.01	±0.005	0.15	0.06	0.03	0.03	12	20			
	1149									0.05	0.07	0.035
	1249											

### Max. Speed

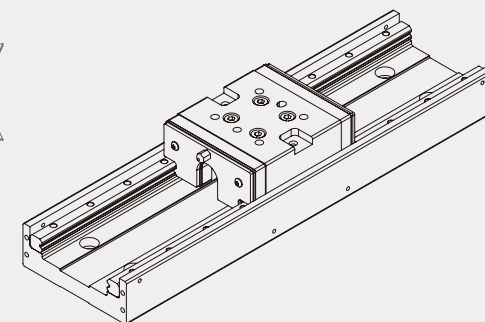
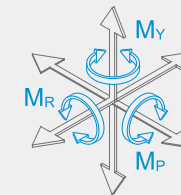
Model No.	Ball Screw Lead (mm)	Travel Stroke (mm)	Speed (mm / sec)	
			Standard	Precision
GK□2040	2	30	100	100
		80		
	6	30	300	300
		80		
GK□2650	2	60	100	100
		110		
		160		
		210		
	5	60	250	250
		110		
		160		
		210		
GK□3060	5	50	250	250
		100		
		200		
		300		
		400		
	10	50	500	500
		100		
		200		
		300		
		400		
GK□4580	10	200	500	500
		300		
		400		
		500		
		600		
		700		
800				

### Max. Speed

Model No.	Ball Screw Lead (mm)	Travel Stroke (mm)	Speed (mm / sec)	
			Standard	Precision
GK□3065	5	67	250	250
		117		
		167		
		217		
GK□4270	5	63	250	250
		113		
		213		
		313		
	10	413	500	500
		513		
		63		
		113		
GK□5496	10	213	500	500
		313		
		413		
	20	513	1000	1000
		63		
		113		
GK□60110	20	229	1000	1000
		329		
		429		
		529		
		629		
		829		
GK□60110	20	849	1000	1000
		949		
		1049		
		1149		
		1249		

### Loading Specifications

Model No.	Ball Screw				Linear Guide				
	Dia (mm)	Lead (mm)	Basic Rated Dynamic Loading (N)	Basic Rated Static Loading (N)	Main Unit				
					Basic Rated Dynamic Loading (N)	Basic Rated Static Loading (N)	Allowable Torque		
							Pitching (N · m)	Yawing (N · m)	Rolling (N · m)
GKS2040	Standard	2	550	920	5409	7227	34	34	34
	Precision								
	Standard	6	630	830					
	Precision								
GKS2650	Standard	2	1700	3200	11700	14850	105	105	238
	Precision								
	Standard	8	1260	2180					
	Precision								
GKS3060	Standard	5	2730	4440	10440	18180	149	149	385
	Precision								
	Standard	10	1740	2580					
	Precision								
GKS4580	Standard	16	7350	13530	20970	35280	437	437	832
	Precision								

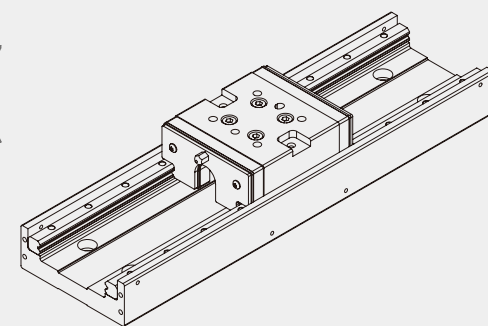
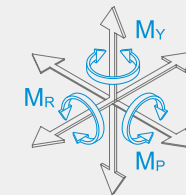


### Loading Specifications

Model No.	Ball Screw				Linear Guide				
	Dia (mm)	Lead (mm)	Basic Rated Dynamic Loading (N)	Basic Rated Static Loading (N)	Main Unit				
					Basic Rated Dynamic Loading (N)	Basic Rated Static Loading (N)	Allowable Torque		
							Pitching (N · m)	Yawing (N · m)	Rolling (N · m)
GKA2040	Standard	2	550	4440	3606	4818	34	34	34
	Precision								
GKA2650	Standard	2	1700	3200	7800	9900	105	105	238
	Precision								
GKA3060	Standard	5	2730	4440	6960	12120	149	149	385
	Precision								
GKA4580	Standard	16	7350	13530	13980	23520	437	437	832
	Precision								

### Loading Specifications

Model No.		Ball Screw				Linear Guide				
		Dia (mm)	Lead (mm)	Basic Rated Dynamic Loading (N)	Basic Rated Static Loading (N)	Main Unit				
						Basic Rated Dynamic Loading (N)	Basic Rated Static Loading (N)	Allowable Torque		
								Pitching (N · m)	Yawing (N · m)	Rolling (N · m)
GKS3065	Standard	10	5	2730	4440	7525.33	12136	82	82	155
	Precision									
GKS4270	Standard	12	5	3240	5930	12419.2	20147	107	107	295
	Precision									
	Standard		10	2160	3580					
	Precision									
GKS5496	Standard	15	10	7100	12610	29557.3	47547	428	428	1032
	Precision									
	Standard		20	4350	7140					
	Precision									
GKS60110	Standard	20	20	6766	15101	31720	59433	675	675	1535
	Precision			5840	11280					



Product Introduction

### Loading Specifications

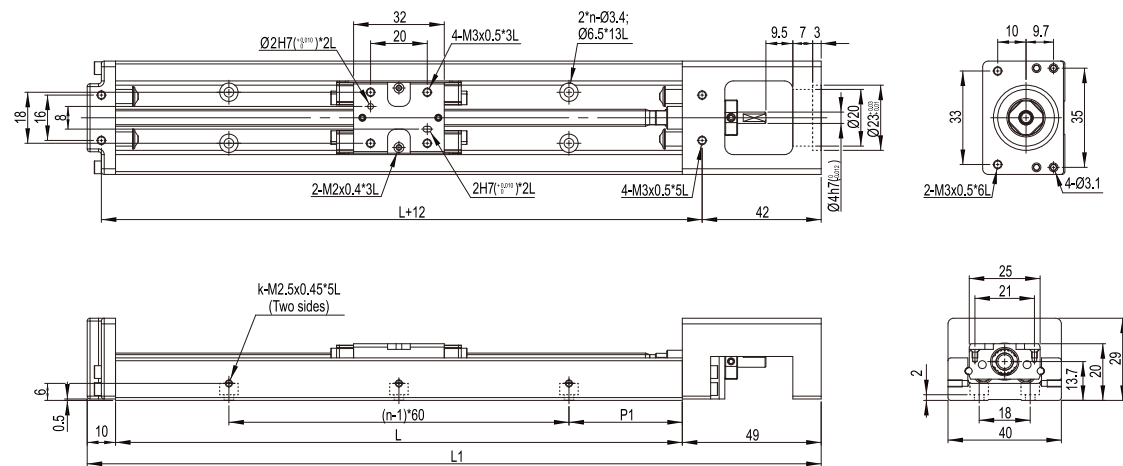
Model No.		Ball Screw				Linear Guide				
		Dia (mm)	Lead (mm)	Basic Rated Dynamic Loading (N)	Basic Rated Static Loading (N)	Main Unit				
						Basic Rated Dynamic Loading (N)	Basic Rated Static Loading (N)	Allowable Torque		
								Pitching (N · m)	Yawing (N · m)	Rolling (N · m)
GKA3065	Standard	10	5	2730	4440	5644	9102	82	82	155
	Precision									
GKA4270	Standard	12	5	3240	5930	9314.4	15110	107	107	295
	Precision									
	Standard		10	2160	3580					
	Precision									
GKA5496	Standard	15	10	7100	12610	22168	35560	428	428	1032
	Precision									
	Standard		20	4350	7140					
	Precision									
GKA60110	Standard	20	20	6766	15101	27960	44575	675	675	1535
	Precision			5840	11280					

Product Introduction



## GK□2040 Specifications

Order Example : GKA2040 - 130 - 12P - P6 (Main unit) + Optional accessories models (P.30 ~ P.51)

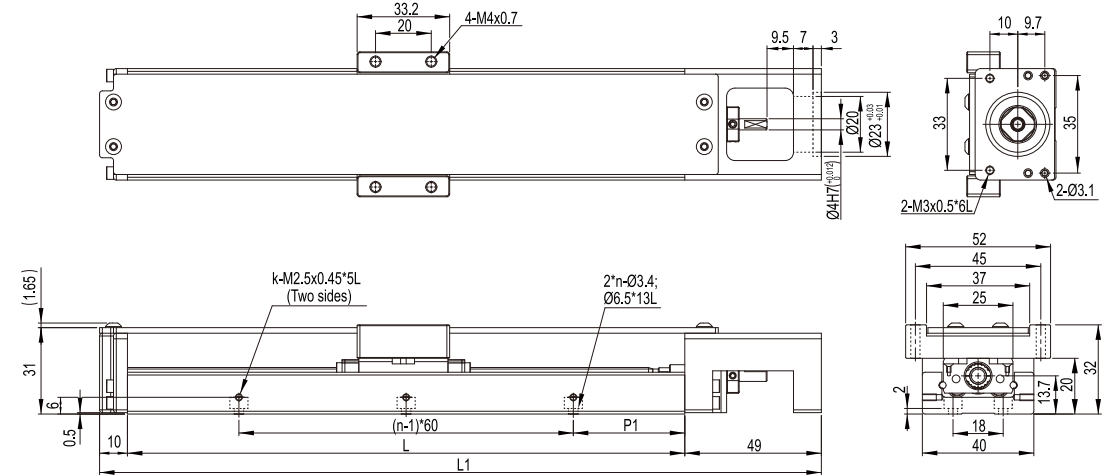


Model No.	Stroke (mm)	Rail L (mm)	Total L1 (mm)	k	m	m1	n	P1	Main Unit Weight (Kg)	
									GKA	GKS
GK□2040	30	100	159	2	-	-	2	20	0.36	0.46
	80	150	209	3	-	-	3	15	0.41	0.60

- ⊙ Example picture shown above is GKA3060-300.
- ⊙ Both GKA and GKS apply to the above specifications.

## GK□2040 w / Dustproof Cover Specifications

Order Example : GKA2040 - 130 - 12P - P6 - C (Main unit) + Optional accessories models (P.30 ~ P.51)

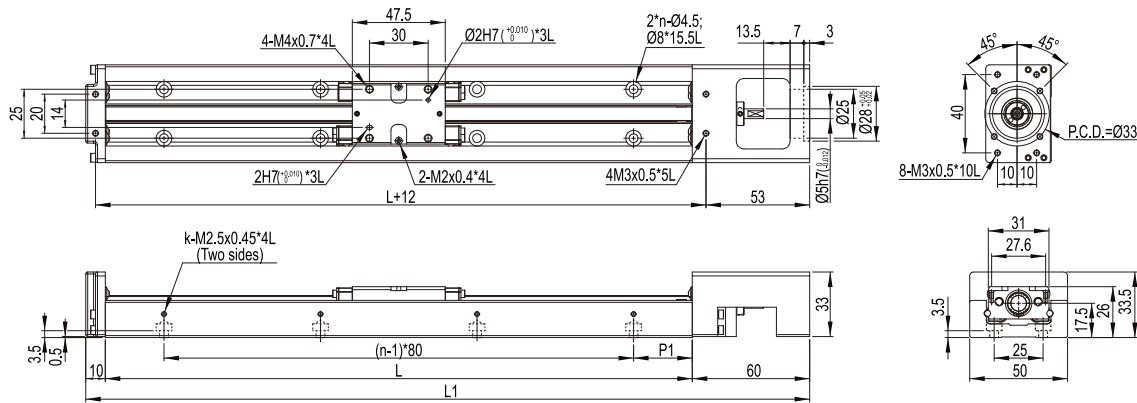


Model No.	Stroke (mm)	Rail L (mm)	Total L1 (mm)	k	m	m1	n	P1	Main Unit Weight(Kg)	
									GKA	GKS
GK□2040	30	100	159	2	-	-	2	20	0.56	0.66
	80	150	209	3	-	-	3	15	0.61	0.80

- ⊙ Example picture shown above is GKA3060-300 with dustproof cover.
- ⊙ Both GKA、GKS apply to the above specifications.

## GK□2650 Specifications

Order Example : GKA2650 - 210 - 12P - P5 (Main unit) + Optional accessories models (P.30 ~ P.51)

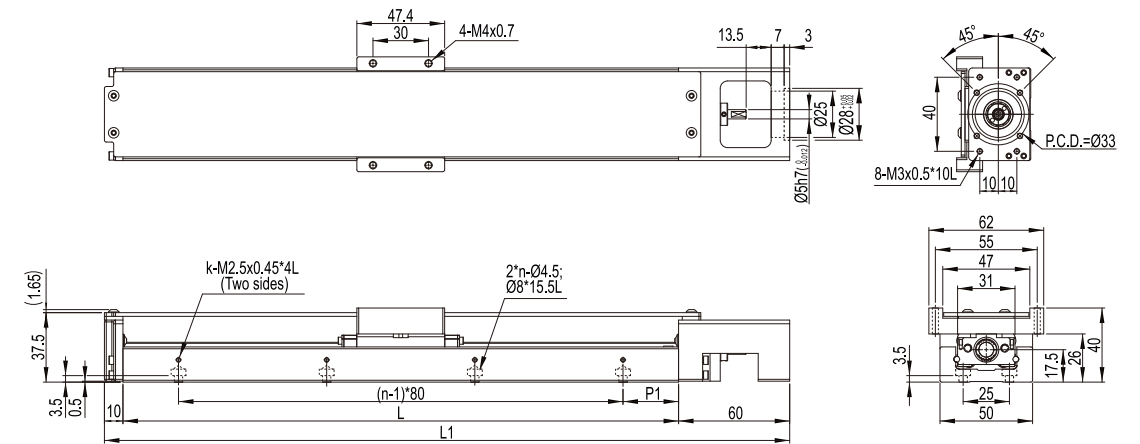


Model No.	Stroke (mm)	Rail L (mm)	Total L1 (mm)	k	m	m1	n	P1	Main Unit Weight (Kg)	
									GKA	GKS
GK□2650	60	150	220	2	-	-	2	35	0.81	1.2
	110	200	270	3	-	-	3	20	0.89	1.4
	160	250	320	3	-	-	3	45	0.97	1.6
	210	300	370	4	-	-	4	30	1.04	1.8

- ⊙ Example picture shown above is GKA3060-300.
- ⊙ Both GKA and GKS apply to the above specifications.

## GK□2650 w / Dustproof Cover Specifications

Order Example : GKA2650 - 210 - 12P - P5 - C (Main unit) + Optional accessories models (P.30 ~ P.51)

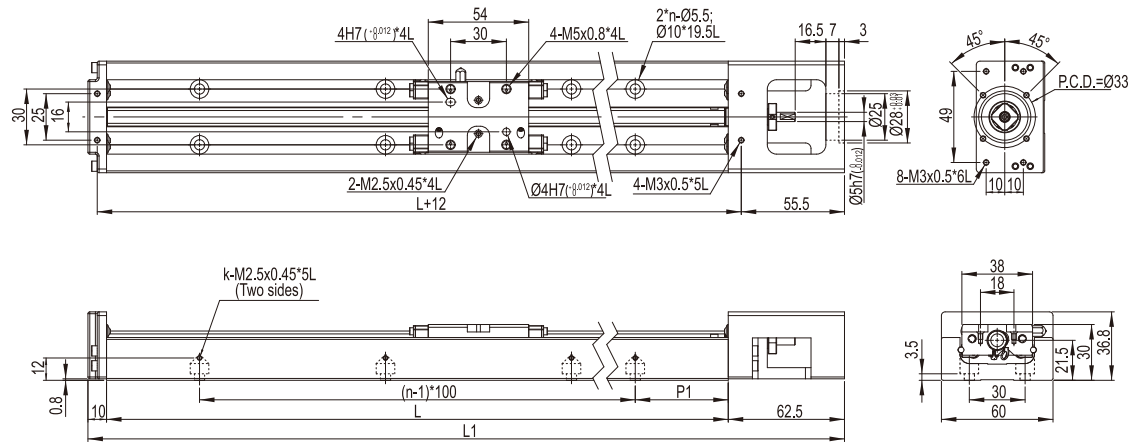


Model No.	Stroke (mm)	Rail L (mm)	Total L1 (mm)	k	m	m1	n	P1	Main Unit Weight (Kg)	
									GKA	GKS
GK□2650	60	150	220	2	-	-	2	35	1.01	1.4
	110	200	270	3	-	-	3	20	1.09	1.6
	160	250	320	3	-	-	3	45	1.27	1.9
	210	300	370	4	-	-	4	30	1.34	2.1

- ⊙ Example picture shown above is GKA3060-300 with dustproof cover.
- ⊙ Both GKA and GKS apply to the above specifications.

## GK□3060 Specifications

Order Example : GKA3060 - 300 - 12P - P5 (Main unit) + Optional accessories models (P.30 ~ P.51)

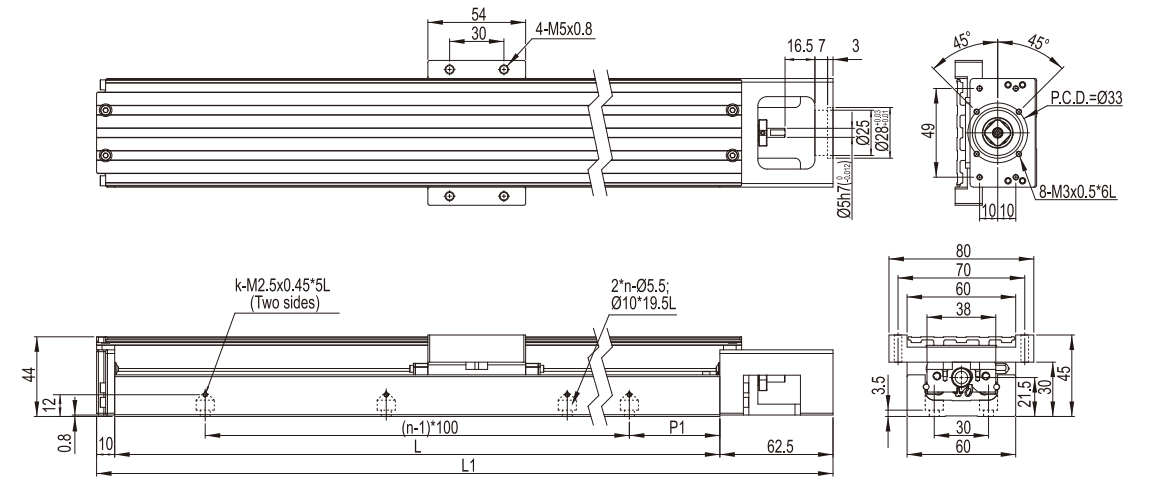


Model No.	Stroke (mm)	Rail L (mm)	Total L1 (mm)	k	m	m1	n	P1	Main Unit Weight (Kg)	
									GKA	GKS
GK□3060	50	150	222.5	2	-	-	2	25	0.90	1.5
	100	200	272.5	2			2	1.02	1.9	
	200	300	372.5	3			3	1.25	2.6	
	300	400	472.5	4			4	1.49	3.2	
	400	500	572.5	5			5	1.72	3.9	
	500	600	672.5	6			6	1.96	4.6	

- ⊙ Example picture shown above is GKA3060-300.
- ⊙ Both GKA and GKS apply to the above specifications.

## GK□3060 w / Dustproof Cover Specifications

Order Example : GKA3060 - 300 - 12P - P5 - C (Main unit) + Optional accessories models (P.30 ~ P.51)

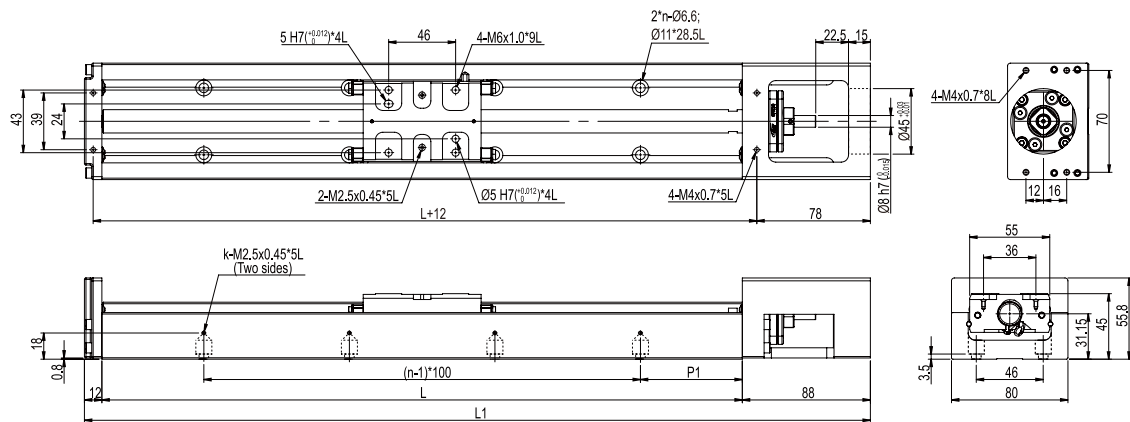


Model No.	Stroke (mm)	Rail L (mm)	Total L1 (mm)	k	m	m1	n	P1	Main Unit Weight (Kg)	
									GKA	GKS
GK□3060	50	150	222.5	2	-	-	2	25	1.40	2.0
	100	200	272.5	2			2	1.52	2.4	
	200	300	372.5	3			3	1.75	3.1	
	300	400	472.5	4			4	2.29	4.0	
	400	500	572.5	5			5	2.52	4.7	
	500	600	672.5	6			6	2.76	5.4	

- ⊙ Example picture shown above is GKA3060-300 with dustproof cover.
- ⊙ Both GKA and GKS apply to the above specifications.

## GK□4580 Specifications

Order Example : GKA4580 - 300 - 12P - P10 (Main unit) + Optional accessories models (P.30 ~ P.51)

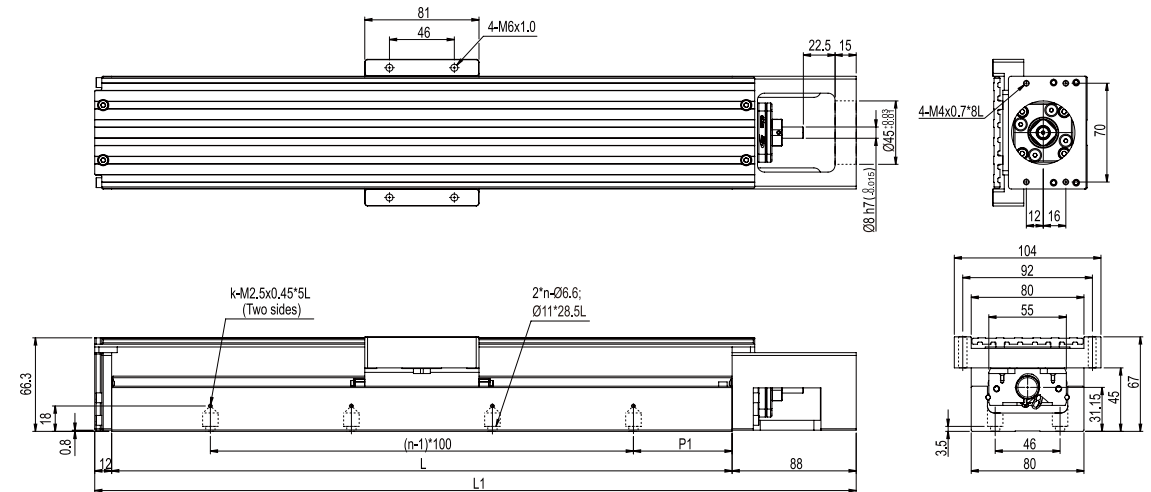


Model No.	Stroke (mm)	Rail L (mm)	Total L1 (mm)	k	m	m1	n	P1	Main Unit Weight (Kg)	
									GKA	GKS
GK□4580	200	340	440	3	-	-	3	70	3.46	5.8
	300	440	540	4	-	-	4		3.86	7.1
	400	540	640	5	-	-	5		4.28	8.4
	500	640	740	6	-	-	6		4.70	9.7
	600	740	840	7	-	-	7		5.12	11.0
	700	840	940	8	-	-	8		5.53	12.3
	800	940	1040	9	-	-	9		5.95	13.5

- ◎ Example picture shown above is GKA3060-340.
- ◎ Both GKA and GKS apply to the above specifications.

## GK□4580 w / Dustproof Cover Specifications

Order Example : GKA4580 - 300 - 12P - P10 - C (Main unit) + Optional accessories models (P.30 ~ P.51)

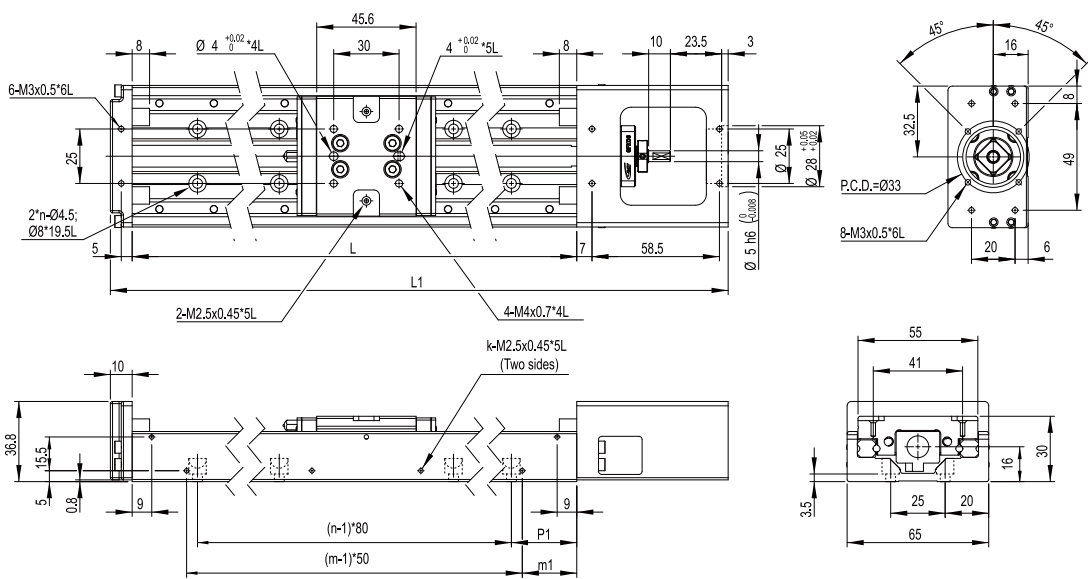
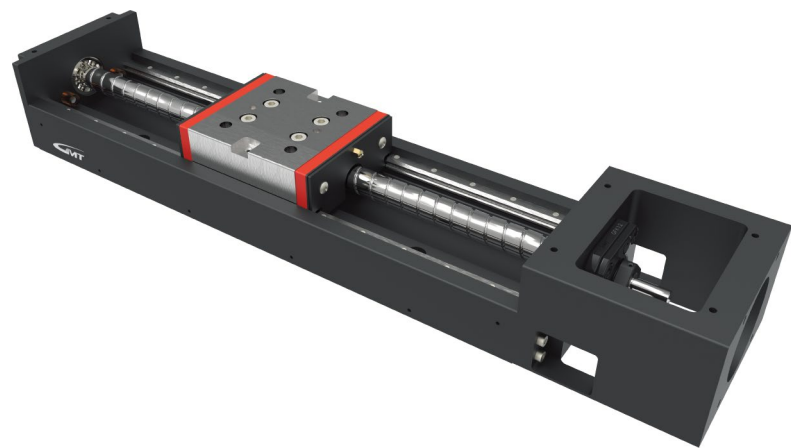


Model No.	Stroke (mm)	Rail L (mm)	Total L1 (mm)	k	m	m1	n	P1	Main Unit Weight (Kg)	
									GKA	GKS
GK□4580	200	340	440	3	-	-	3	70	4.26	6.6
	300	440	540	4	-	-	4		4.66	7.9
	400	540	640	5	-	-	5		5.48	9.6
	500	640	740	6	-	-	6		5.90	10.9
	600	740	840	7	-	-	7		6.32	12.2
	700	840	940	8	-	-	8		7.53	14.3
	800	940	1040	9	-	-	9		7.95	15.5

- ◎ Example picture shown above is GKA3060-300 with dustproof cover.
- ◎ Both GKA and GKS apply to the above specifications.

## GK□3065 Specifications

Order Example : GKA3065 - 150 - 12P - P5 (Main unit) + Optional accessories models (P.30 ~ P.52)

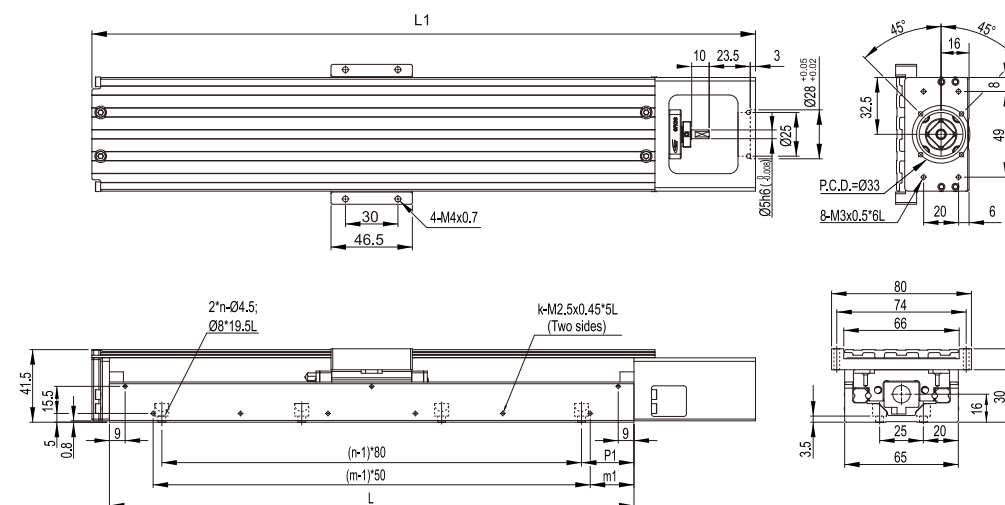


Model No.	Stroke (mm)	Rail L (mm)	Total L1 (mm)	k	m	m1	n	P1	Main Unit Weight (Kg)	
									GKA	GKS
GK□3065	67	150	229.5	5	3	25	2	35	1.2	1.6
	117	200	279.5	6	4		3	20	1.3	2.0
	167	250	329.5	7	5		3	45	1.5	2.3
	217	300	379.5	8	6		4	30	1.6	2.6

- ☉ Example picture shown above is GKA5496-340.
- ☉ Both GKA and GKS apply to the above specifications.

## GK□3065 w / Dustproof Cover Specifications

Order Example : GKA3065 - 150 - 12P - P5 - C (Main unit) + Optional accessories models (P.30 ~ P.52)

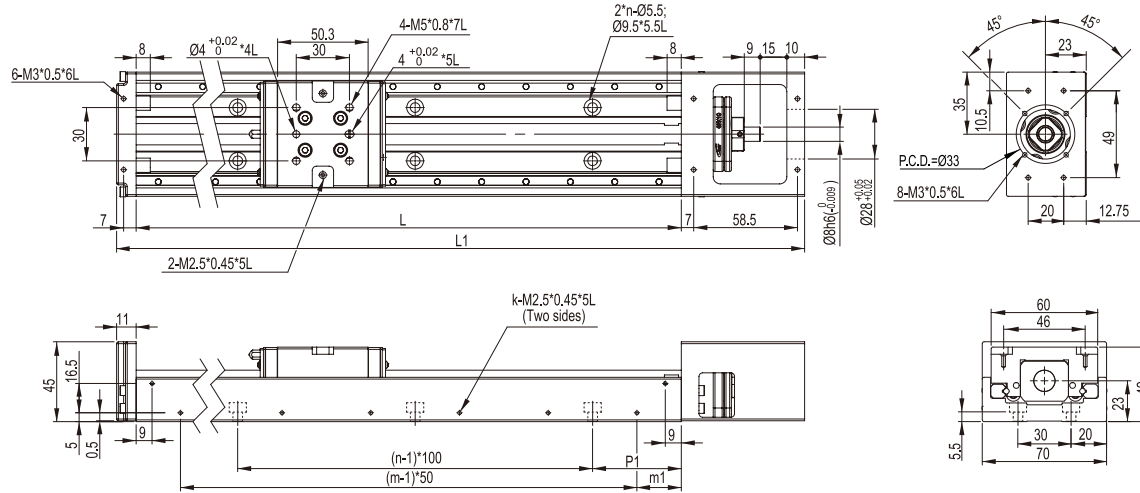
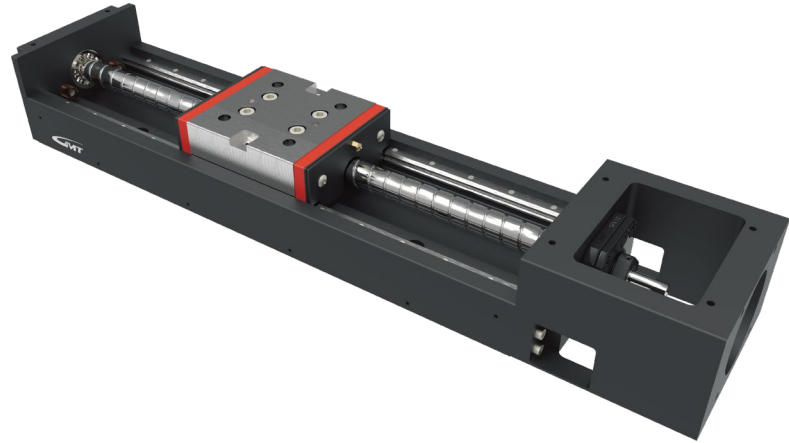


Model No.	Stroke (mm)	Rail L (mm)	Total L1 (mm)	k	m	m1	n	P1	Main Unit Weight (Kg)	
									GKA	GKS
GK□3065	67	150	229.5	5	3	25	2	35	1.5	1.9
	117	200	279.5	6	4		3	20	1.6	2.3
	167	250	329.5	7	5		3	45	1.8	2.6
	217	300	379.5	8	6		4	30	1.9	2.9

- ☉ Example picture shown above is GKA4270-300 with dustproof cover.
- ☉ Both GKA and GKS apply to the above specifications.

## GK□4270 Specifications

Order Example : GKA4270 - 150 - 12P - P5 (Main unit) + Optional accessories models (P.30 ~ P.52)

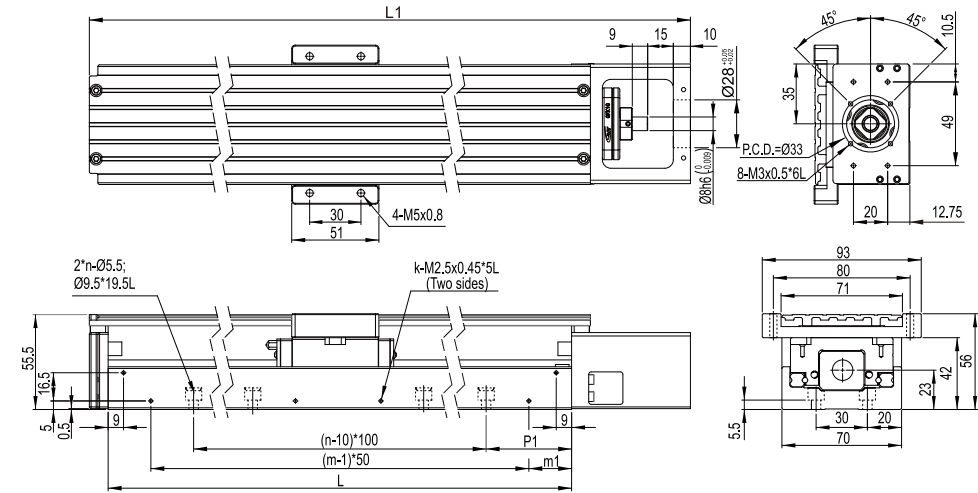


Model No.	Stroke (mm)	Rail L (mm)	Total L1 (mm)	k	m	m1	n	P1	Main Unit Weight (Kg)	
									GKA	GKS
GK□4270	63	150	230.5	5	3	25	2	25	1.7	2.4
	113	200	280.5	6	4		2	2.1	2.9	
	213	300	380.5	8	6		3	2.5	3.8	
	313	400	480.5	10	8		4	2.9	4.6	
	413	500	580.5	12	10		5	3.3	5.4	
	513	600	680.5	14	12		6	3.7	6.3	

- ⊙ Example picture shown above is GKA5496-340.
- ⊙ Both GKA and GKS apply to the above specifications.

## GK□4270 w / Dustproof Cover Specifications

Order Example : GKA4270 - 150 - 12P - P5 - C (Main unit) + Optional accessories models (P.30 ~ P.52)

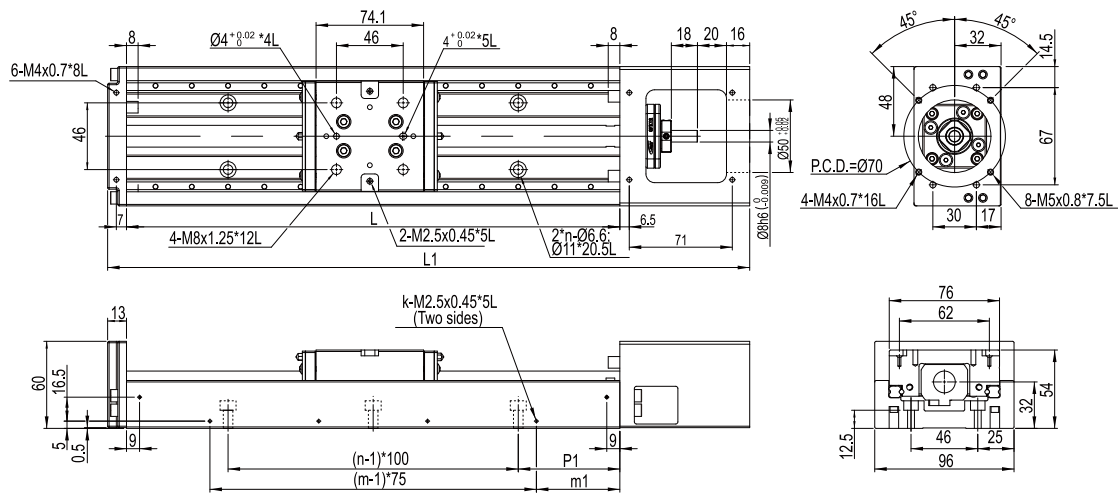
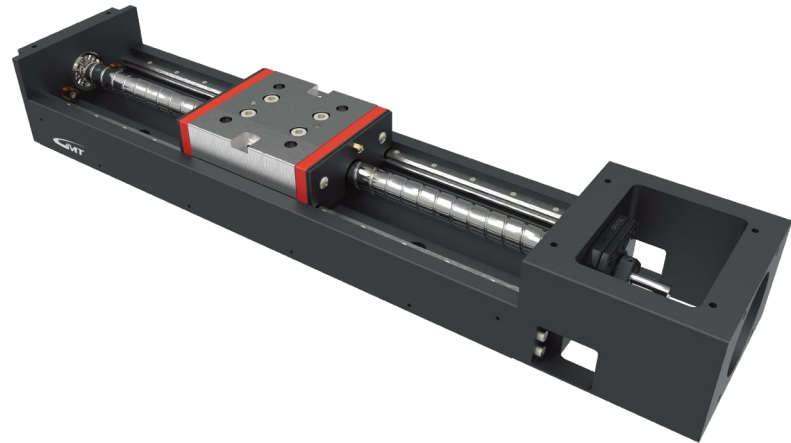


Model No.	Stroke (mm)	Rail L (mm)	Total L1 (mm)	k	m	m1	n	P1	Main Unit Weight (Kg)	
									GKA	GKS
GK□4270	63	150	230.5	5	3	25	2	25	2.1	2.8
	113	200	280.5	6	4		2	2.5	3.3	
	213	300	380.5	8	6		3	2.9	4.2	
	313	400	480.5	10	8		4	3.3	5.0	
	413	500	580.5	12	10		5	3.7	5.8	
	513	600	680.5	14	12		6	4.1	6.7	

- ⊙ Example picture shown above is GKA4270-300 with dustproof cover.
- ⊙ Both GKA and GKS apply to the above specifications.

## GK□5496 Specifications

Order Example : GKA5496 - 340 - 12P - P10 (Main unit) + Optional accessories models (P.30 ~ P.52)

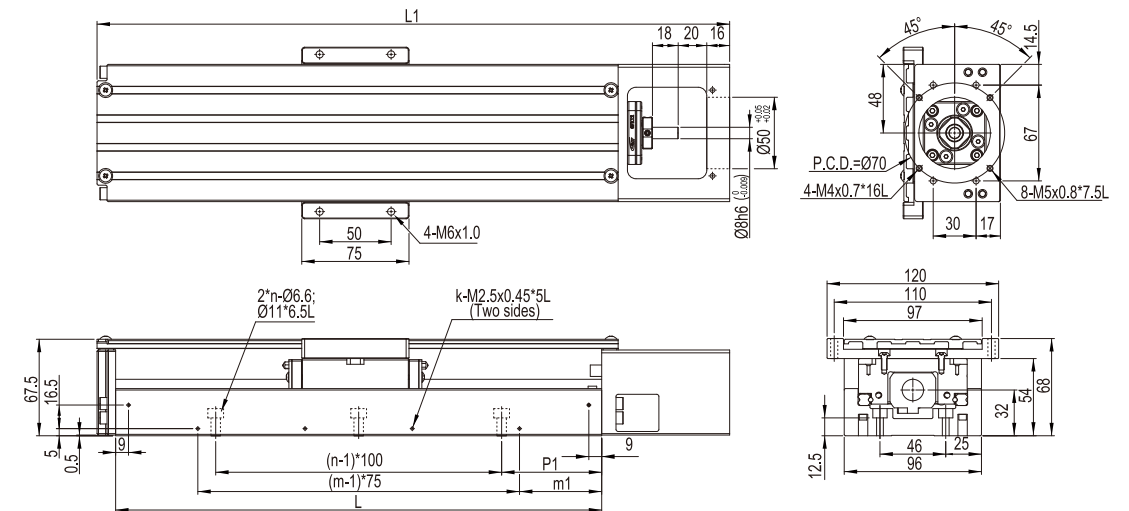


Model No.	Stroke (mm)	Rail L (mm)	Total L1 (mm)	k	m	m1	n	P1	Main Unit Weight (Kg)	
									GKA	GKS
GK□5496	229	340	442.5	6	4	57.5	3	70	4.7	7.9
	329	440	542.5	8	6	32.5	4		5.4	9.6
	429	540	642.5	10	8	7.5	5		6.1	11.2
	529	640	742.5	10	8	57.5	6		6.8	12.9
	629	740	842.5	12	10	32.5	7		7.5	14.5
	829	940	1042.5	14	12	57.5	9		9.1	17.9

- ⊙ Example picture shown above is GKA5496-340.
- ⊙ Both GKA and GKS apply to the above specifications.

## GK□5496 w / Dustproof Cover Specifications

Order Example : GKA5496 - 340 - 12P - P10 - C (Main unit) + Optional accessories models (P.30 ~ P.52)

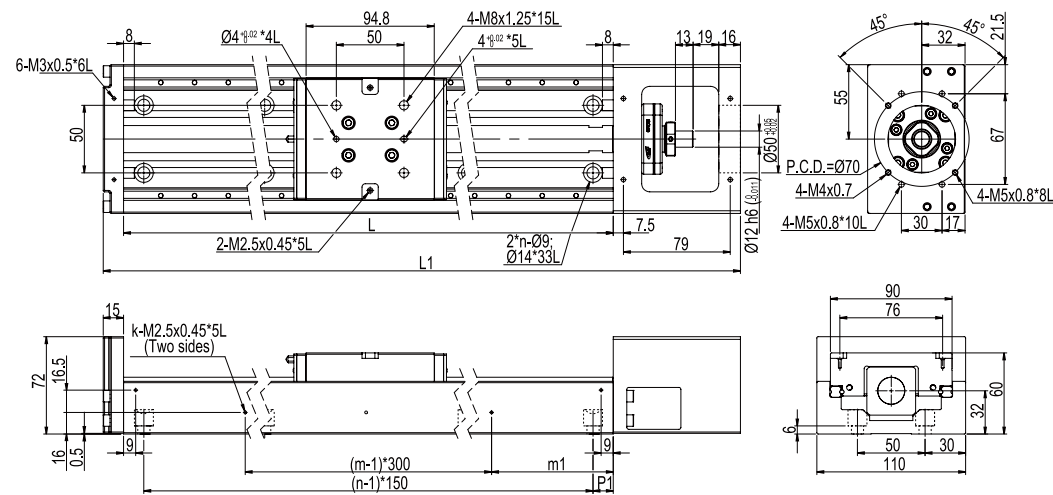
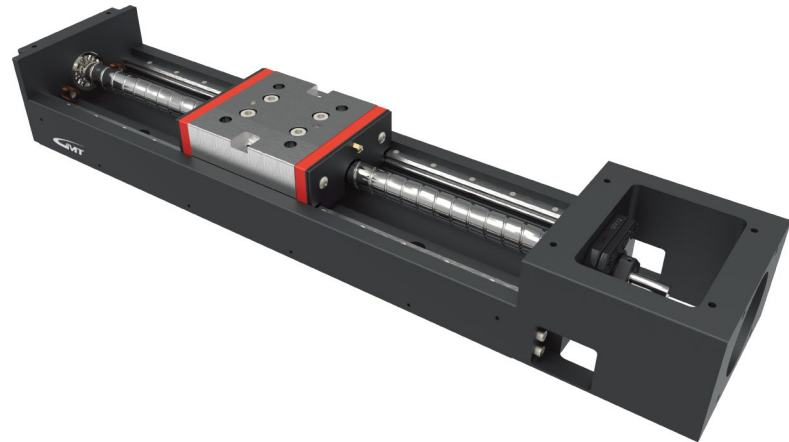


Model No.	Stroke (mm)	Rail L (mm)	Total L1 (mm)	k	m	m1	n	P1	Main Unit Weight (Kg)	
									GKA	GKS
GK□5496	229	340	442.5	6	4	57.5	3	70	5.4	8.6
	329	440	542.5	8	6	32.5	4		6.1	10.3
	429	540	642.5	10	8	7.5	5		6.9	12.0
	529	640	742.5	10	8	57.5	6		7.7	13.8
	629	740	842.5	12	10	32.5	7		8.4	15.4
	829	940	1042.5	14	12	57.5	9		10.0	18.8

- ⊙ Example picture shown above is GKA4270-300 with dustproof cover.
- ⊙ Both GKA and GKS apply to the above specifications.

## GK□60110 Specifications

Order Example : GK60110 - 980 - 12P - P20 (Main unit) + Optional accessories models (P.30 ~ P.52)

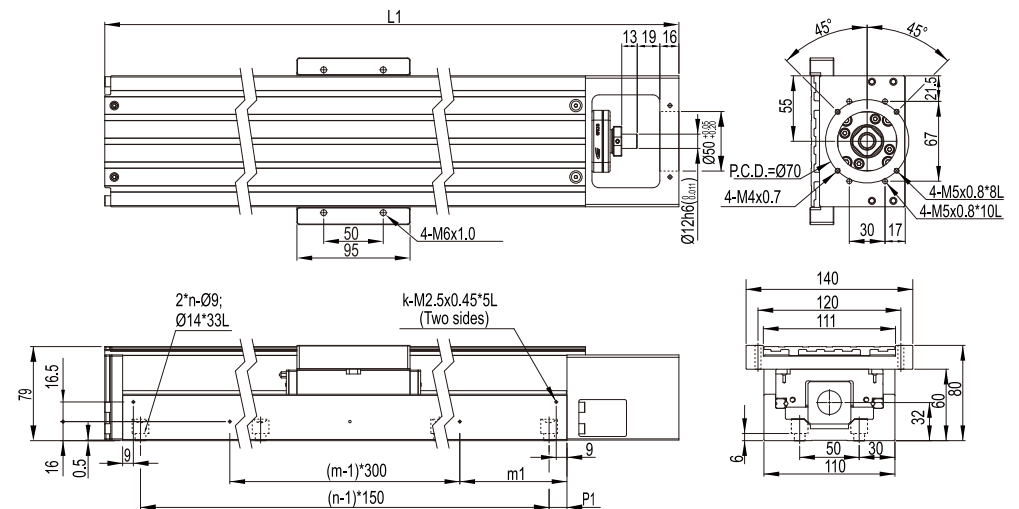


Model No.	Stroke (mm)	Rail L (mm)	Total L1 (mm)	k	m	m1	n	P1	Main Unit Weight (Kg)	
									GKA	GKS
GK□60110	849	980	1089	4	7	40	7	40	12.5	23.9
	949	1080	1189	4	7	90	8	15	13.5	25.6
	1049	1180	1289	4	7	140	8	65	14.5	27.2
	1149	1280	1389	5	9	40	9	40	15.5	29.9
	1249	1380	1489	5	9	90	10	15	16.5	31.5

- ⊙ Example picture shown above is GKA5496-340.
- ⊙ Both GKA and GKS apply to the above specifications.

## GK□60110 w / Dustproof Cover Specifications

Order Example : GKA60110 - 980 - 12P - P20 - C (Main unit) + Optional accessories models (P.30 ~ P.52)

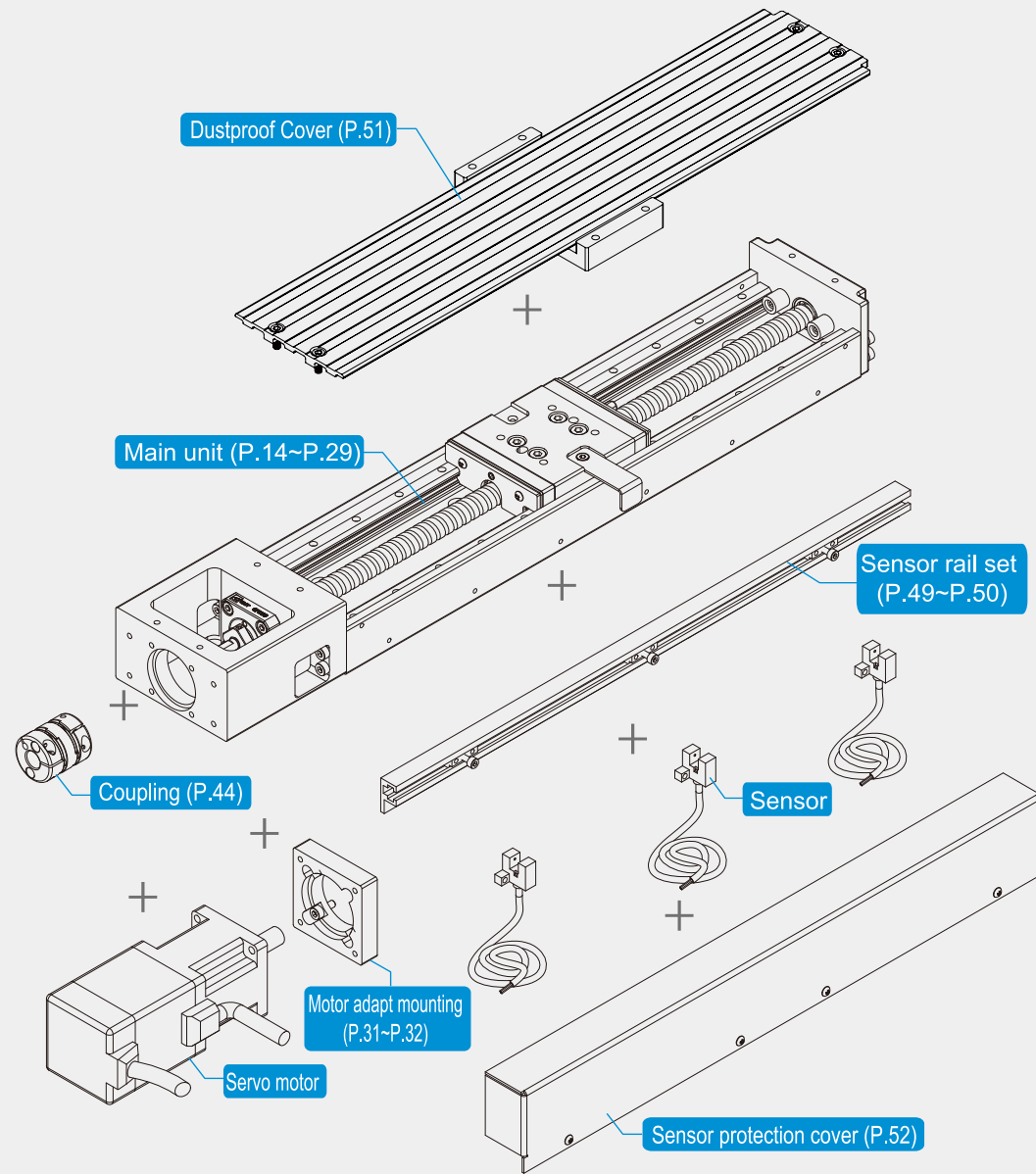


Model No.	Stroke (mm)	Rail L (mm)	Total L1 (mm)	k	m	m1	n	P1	Main Unit Weight (Kg)	
									GKA	GKS
GK□60110	849	980	1089	4	7	40	7	40	14.5	25.5
	949	1080	1189	4	7	90	8	15	15.5	27.5
	1049	1180	1289	4	7	140	8	65	16.5	29.5
	1149	1280	1389	5	9	40	9	40	17.5	31.5
	1249	1380	1489	5	9	90	10	15	18.5	33.5

- ⊙ Example picture shown above is GKA4270-300 with dustproof cover.
- ⊙ Both GKA and GKS apply to the above specifications.



### Accessories Introduction



- “( )” Motor adapt mounting model
- “—” Can be mounted with motor directly
- “N/A” Not applicable
- Motor mount bases and adapt mountings are optional
- The material of motor mount bases and adapt mountings are aluminum

### Motor Mount Bases and Adapt Mountings

Motor Type	Motor Brand	Motor Model		Motor Model (Double Shaft)	GK□2040	GK□2650	GK□3060	GK□4580
		Single Shaft	Double Shaft					
Stepper Motor	GMT	2MS-N28U32A	2MS-N28D32A	2-Phase 4-Lead 1.8°	GK20-G28 (G2)	GK26-G28 (G2)	N / A	
		2MS-N42U47A	2MS-N42D47A	2-Phase 4-Lead 1.8°	GK20-G42 (G4)	GK26-G42 (G4)	GK-G42 (G4)	N / A
		2MS-N57U76A	2MS-N57D76A	2-Phase 4-Lead 1.8°	N / A			GK45-G57(G5)
	Sanyo	103H5210-0440	103H5210-0410	2-Phase 6-Lead 1.8°	GK20-G42 (G4)	GK26-G42 (G4)	GK-G42 (G4)	N / A
		103F5510-8241	103F5510-8211	5-Phase 5-Lead 0.72°	N / A			GK45-G60(G6)
		103H7823-0140	103H7823-0110	2-Phase 6-Lead 1.8°	N / A			GK45-G60(G6)
	Oriental	SM5603-8241	SM5603-8211	5-Phase 5-Lead 0.72°	N / A			GK45-G60(G6)
		PKP246D23A	PKP246D23B	2-Phase 6-Lead 1.8°	GK20-G42 (G4)	GK26-G42 (G4)	GK-G42 (G4)	N / A
		PKP546N18A	PKP546N18B	5-Phase 5-Lead 0.72°	GK20-G42 (G4)	GK26-G42 (G4)	GK-G42 (G4)	N / A
		PKP569FN24AW	PKP569FN24BW	5-Phase 5-Lead 0.72°	N / A			GK45-G60 (G6)

Motor Type	Motor Brand	Motor Model	Motor Rate	GK□2040	GK□2650	GK□3060	GK□4580
Servo Motor	Delta	ECMA-C□040F	50W	GK20-E (E)	GK-H (H)		N / A
		ECMA-C□0401	100W	N / A	GK-H (H)		GK45-H (H)
		ECMA-C□0602	200W		N / A		GK45-E (E)
		ECMA-C□0604	400W		N / A		N / A
		ECMA-C□0807	750W	N / A		N / A	
	Panasonic	MSMD5A	50W	GK20-M (M)	GK-M (M)		N / A
		MSME5A	100W	N / A	GK-M (M)		GK45-M1 (M1)
		MSMD01			GK-M (M)		N / A
		MSME01	200W		GK-M (M)		N / A
		MSMD02			GK-M (M)		N / A
		MSME02			GK-M (M)		N / A
		MHME02	400W		GK-M (M)		N / A
		MSMD04			GK-M (M)		N / A
		MSME04			GK-M (M)		N / A
		MHME04			GK-M (M)		N / A
	MDME04	750W	GK-M (M)		N / A		
	MSMD08		GK-M (M)		N / A		
	MSME08		GK-M (M)		N / A		
MHME08	GK-M (M)		N / A				
MDME08	50W	GK20-E (E)		GK-H (H)		N / A	
HG-KR053		100W	GK20-E (E)		GK-H (H)		GK45-H (H)
HG-MR053			GK20-E (E)		GK-H (H)		N / A
HG-KR13		200W	GK20-E (E)		GK-H (H)		GK45-H (H)
HK-MR13			GK20-E (E)		GK-H (H)		N / A
HG-KR23		400W	GK20-E (E)		GK-H (H)		GK45-E (E)
HG-MR23			GK20-E (E)		GK-H (H)		N / A
HG-KR43		750W	GK20-E (E)		GK-H (H)		GK45-E (E)
HG-MR43	GK20-E (E)		GK-H (H)		N / A		
HG-KR73	750W	GK20-E (E)		GK-H (H)		GK45-E (E)	
HK-MR73		GK20-E (E)		GK-H (H)		N / A	

- “( )” Motor adapt mounting model
- “—” Can be mounted with motor directly
- “N/A” Not applicable
- Motor mount bases and adapt mountings are optional
- The material of motor mount bases and adapt mountings are aluminum

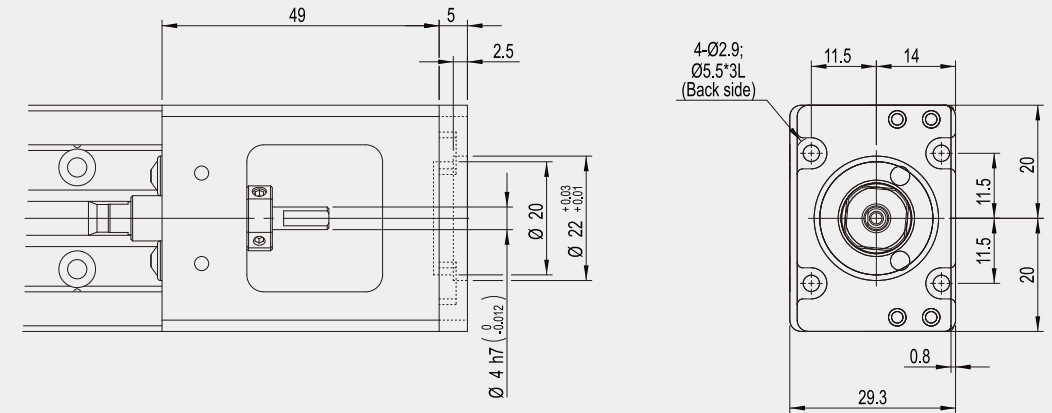
### Motor Mount Bases and Asapt Mountings

Motor Type	Motor Brand	Motor Model		Motor Model (Double Shaft)	GK□3065	GK□4270	GK□5496	GK□60110
		Single Shaft	Double Shaft					
Stepper Motor	GMT	2MS-N42U47A	2MS-N42D47A	2-Phase 4-Lead 1.8°	GK-G42 (G4)		N / A	
		2MS-N57U76A	2MS-N57D76A	2-Phase 4-Lead 1.8°	N / A		GK-G56 (G5)	
	Sanyo	103H5210-0440	103H5210-0410	2-Phase 6-Lead 1.8°	GK-G42 (G4)		N / A	
		103F5510-8241	103F5510-8211	5-Phase 5-Lead 0.72°				
		103H7823-0140	103H7823-0110	2-Phase 6-Lead 1.8°	N / A		GK-G60 (G6)	
	Oriental	SM5603-8241	SM5603-8211	5-Phase 5-Lead 0.72°				
		PKP246D23A	PKP246D23B	2-Phase 6-Lead 1.8°	GK-G42 (G4)		N / A	
		PKP546N18A	PKP546N18B	5-Phase 5-Lead 0.72°				
		PKP569FN24AW	PKP569FN24BW	5Phase 5-Lead 0.72°	N / A		GK-G60 (G6)	

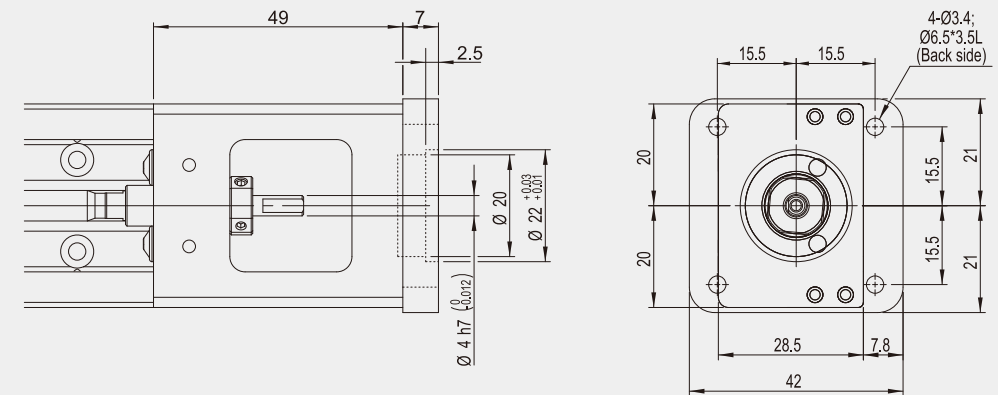
Motor Type	Motor Brand	Motor Model	Motor Rate	GK□3065	GK□4270	GK□5496	GK□60110
Servo Motor	Delta	ECMA-C□0401	100W	GK-H (H)		GK-H1 (H1)	N / A
		ECMA-C□0602	200W			—	—
		ECMA-C□0604	400W	N / A			
		ECMA-C□0807	750W			N / A	GK-H8 (H8)
	Panasonic	MSMD5A	50W	GK-M (M)	GK-M1 (M1)	N / A	
		MSME5A					
		MSMD01	100W				
		MSME01					
		MSMD02	200W				
		MSME02					
		MHME02					
		MSMD04	400W	N / A			
		MSME04					
		MHME04					
		MDME04					
		MSMD08	750W	N / A			
	MSME08						
	MHME08						
	MDME08						
	Misubishi	HG-KR053	50W	GK-H (H)	GK-H1 (H1)	N / A	
		HG-MR053					
		HG-KR13	100W				
		HK-MR13					
		HG-KR23	200W	N / A			
HG-MR23							
HG-KR43		400W					
HG-MR43							
HG-KR73	750W	N / A					
HK-MR73							

### Stepper Motor Mount Bases and Adapt Mountings

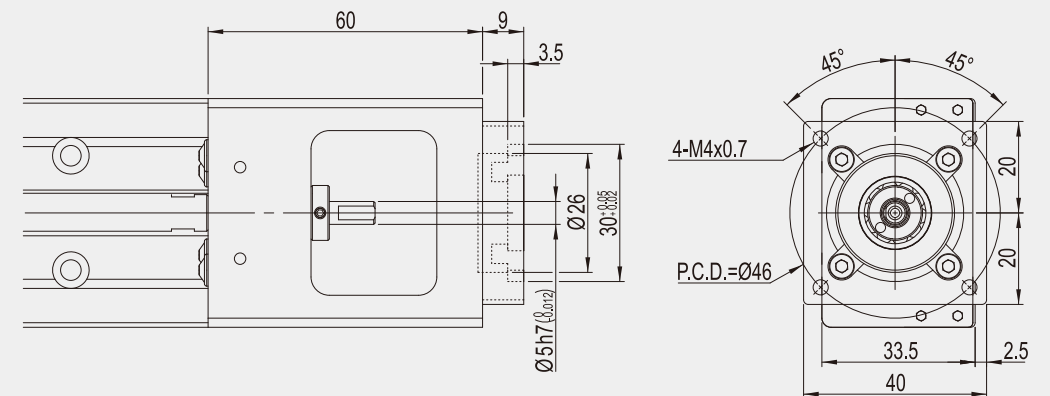
GK□2040 Motor mount bases / Motor adapt mountings (GK20-G28)



GK□2040 Motor mount bases / Motor adapt mountings (GK20-G42)

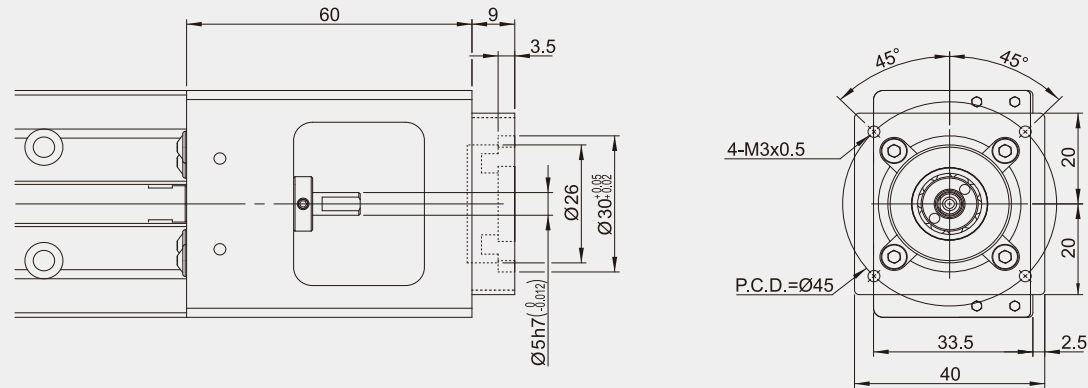


GK□2650 Motor mount bases / Motor adapt mountings (GK-H)

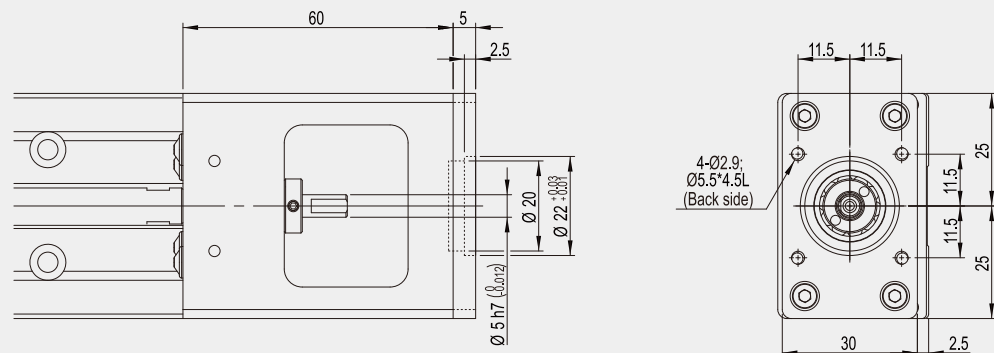


## Stepper Motor Mount Bases and Adapt Mountings

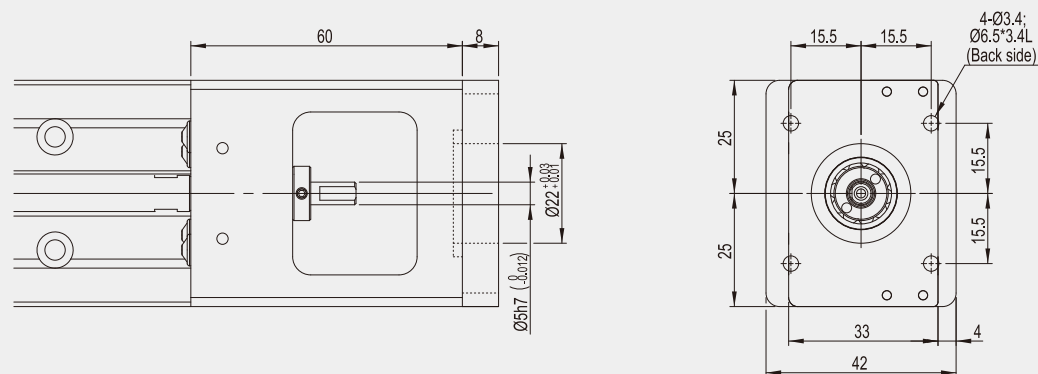
GK□2650 Motor mount bases / Motor adapt mountings (GK-M)



GK□2650 Motor mount bases / Motor adapt mountings (GK26-G28)

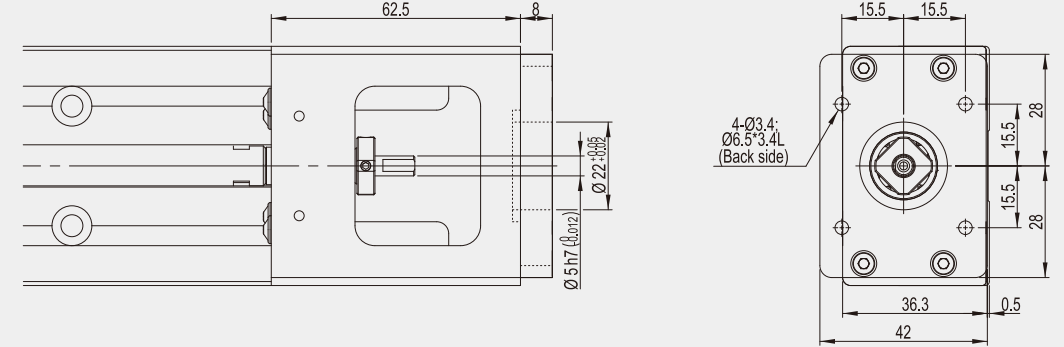


GK□2650 Motor mount bases / Motor adapt mountings (GK26-G42)

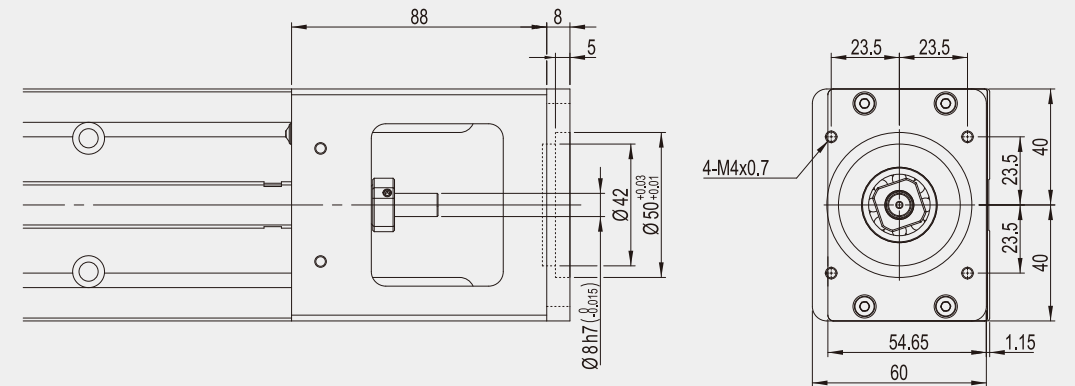


## Stepper Motor Mount Bases and Adapt Mountings

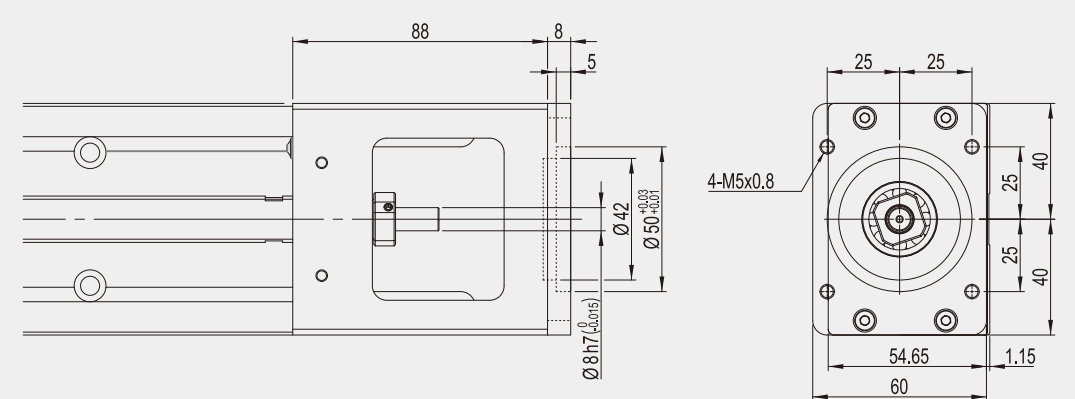
GK□3060 Motor mount bases / Motor adapt mountings (GK-G42)



GK□4580 Motor mount bases / Motor adapt mountings (GK45-G57)

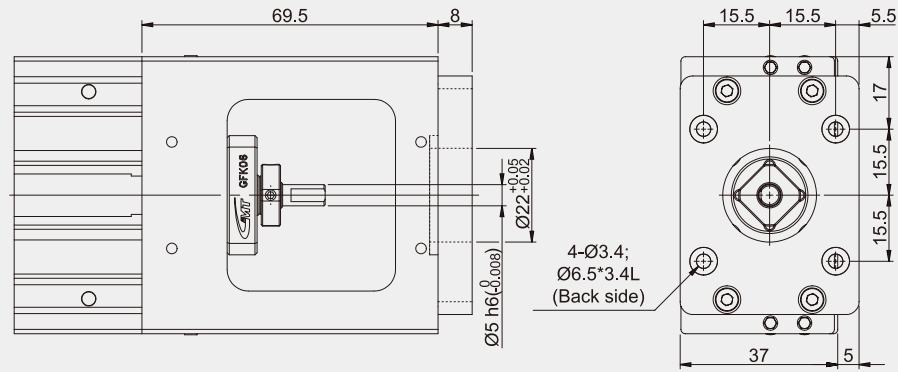


GK□4580 Motor mount bases / Motor adapt mountings (GK45-G60)

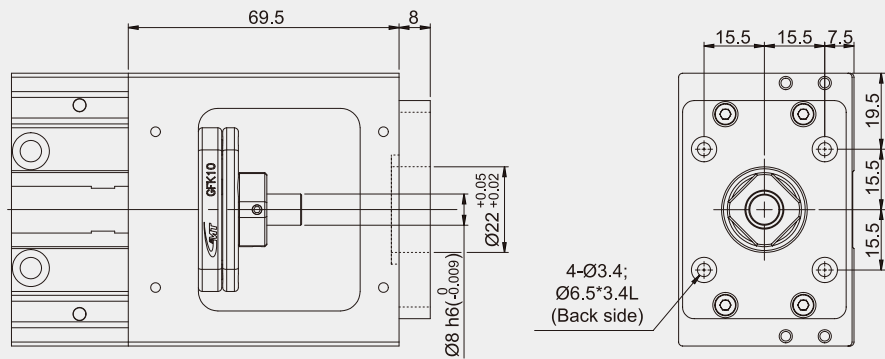


## Stepper Motor Mount Bases and Adapt Mountings

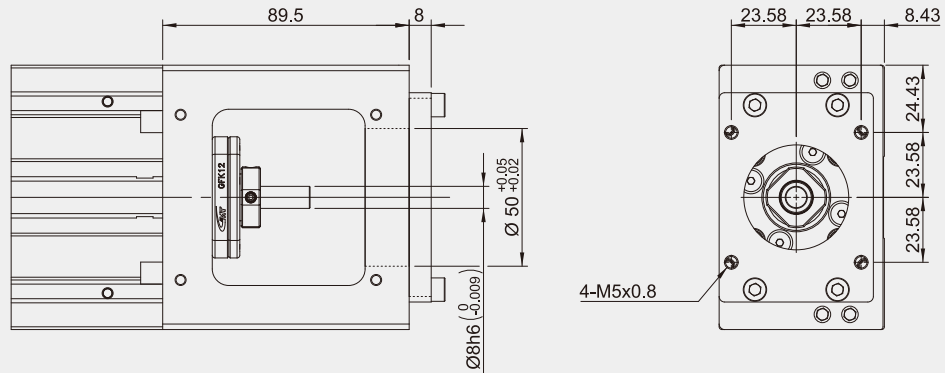
GK□3065 Motor mount bases / Motor adapt mountings (GK-G42)



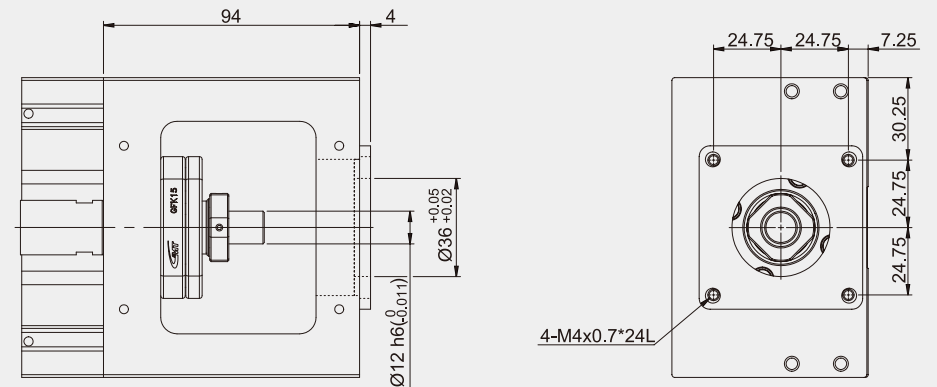
GK□4270 Motor mount bases / Motor adapt mountings (GK-G42)



GK□5496 Motor mount bases / Motor adapt mountings (GK-G56)

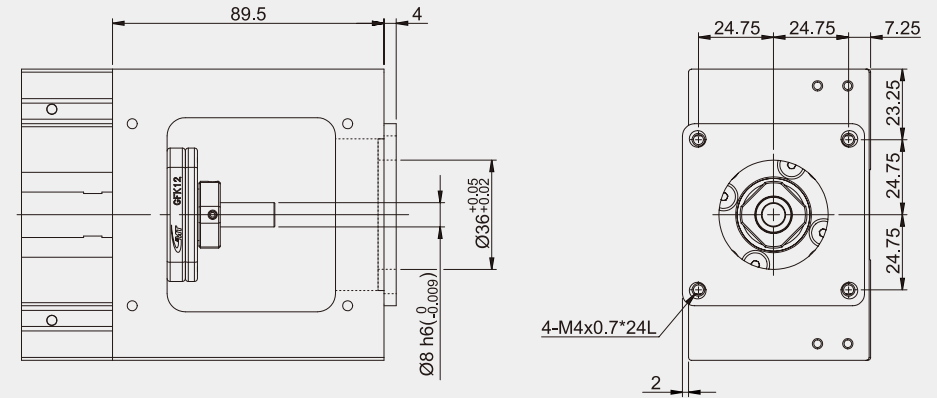


GK□60110 Motor mount bases / Motor adapt mountings (GK-G60)

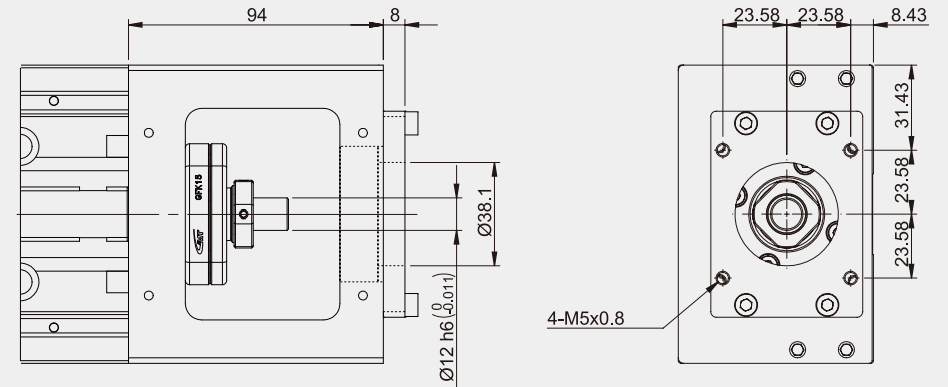


## Stepper Motor Mount Bases and Adapt Mountings

GK□5496 Motor mount bases / Motor adapt mountings (GK-G60)

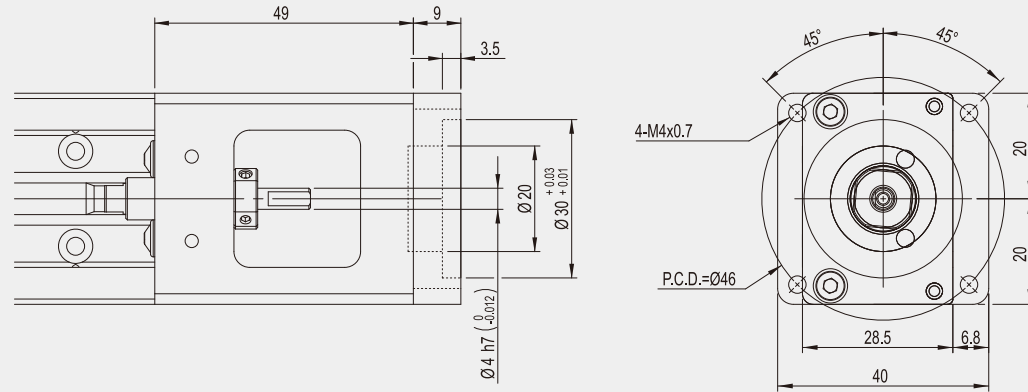


GK□60110 Motor mount bases / Motor adapt mountings (GK-G56)

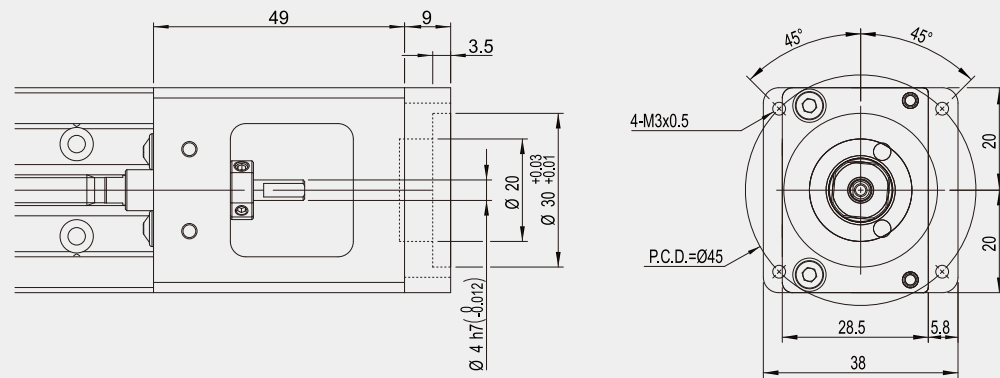


## Servo Motor Mount Bases and Adapt Mountings

GK□2040 Motor mount bases / Motor adapt mountings (GK20-E)

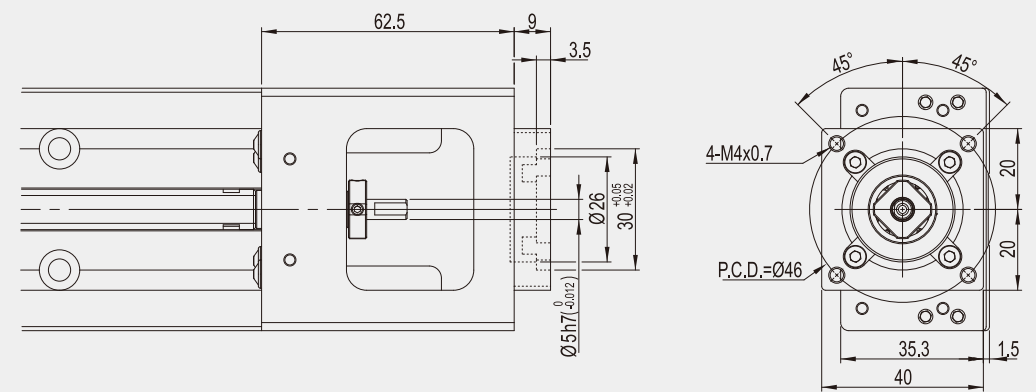


GK□2040 Motor mount bases / Motor adapt mountings (GK20-M)

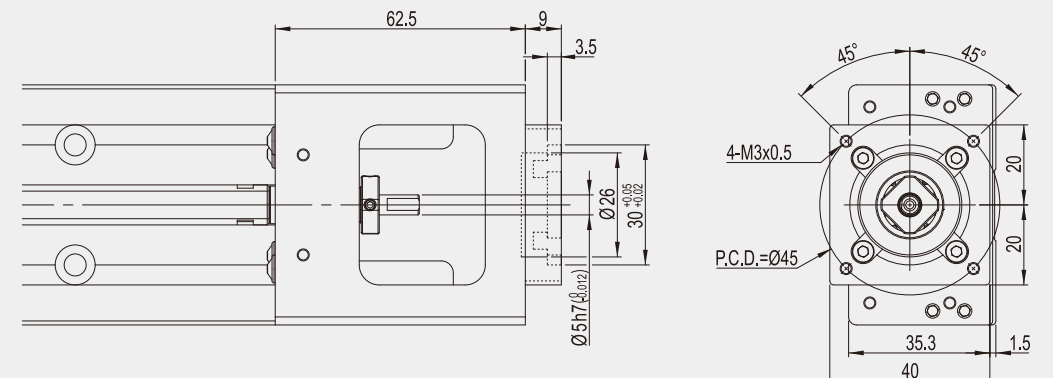


## Servo Motor Mount Bases and Adapt Mountings

GK□2650 & 3060 Motor mount bases / Motor adapt mountings (GK-H)

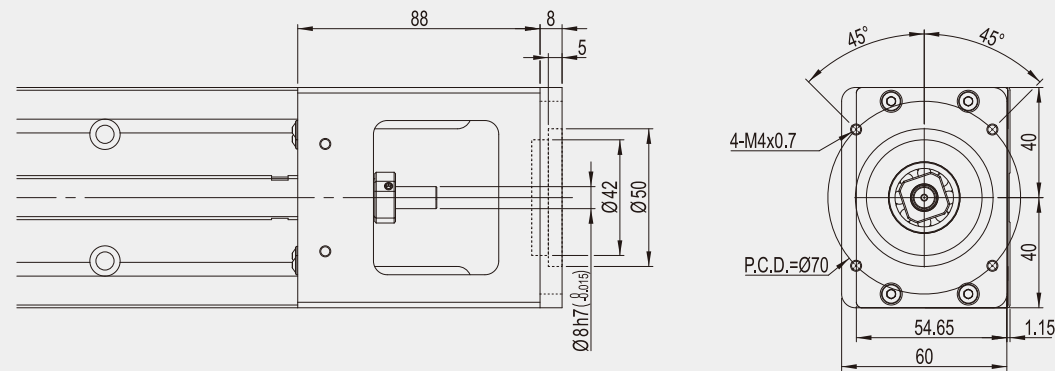


GK□2650 & 3060 Motor mount bases / Motor adapt mountings (GK-M)



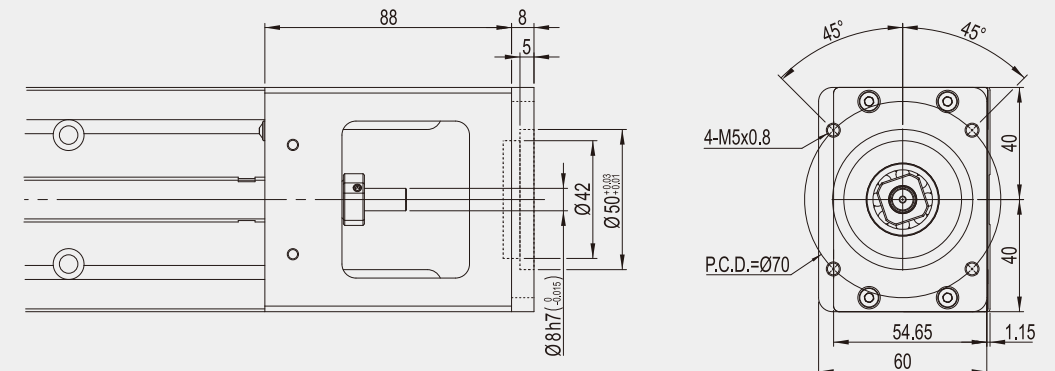
### Servo Motor Mount Bases and Adapt Mountings

GK□4580 Motor mount bases / Motor adapt mountings (GK45-M)

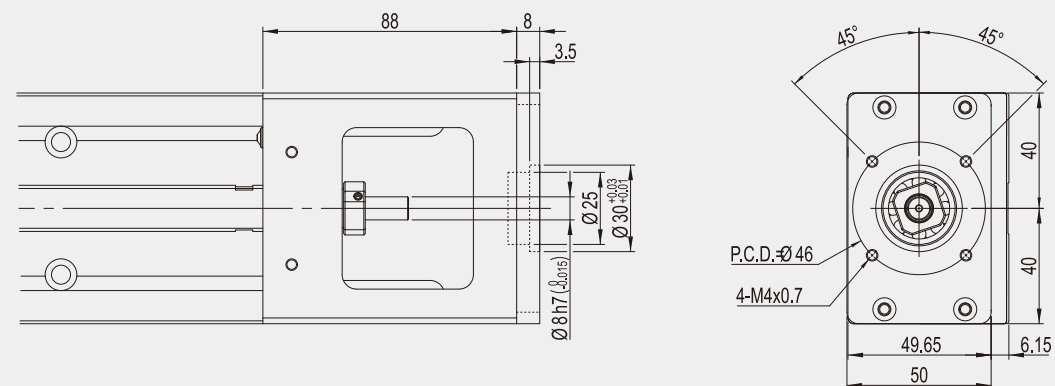


### Servo Motor Mount Bases and Adapt Mountings

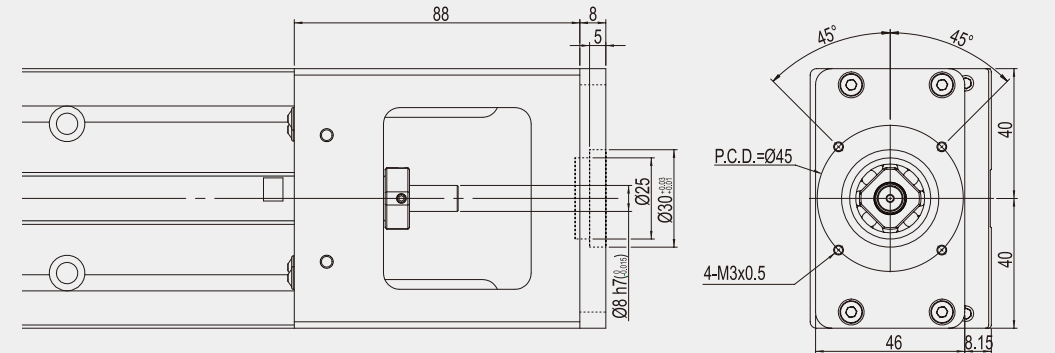
GK□4580 Motor mount bases / Motor adapt mountings (GK45-E)



GK□4580 Motor mount bases / Motor adapt mountings (GK45-H)



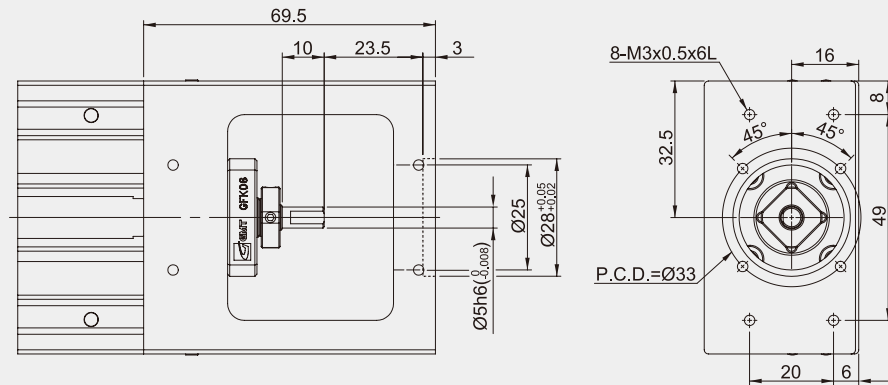
GK□4580 Motor mount bases / Motor adapt mountings (GK45-M1)



## Servo Motor Mount Bases and Adapt Mountings

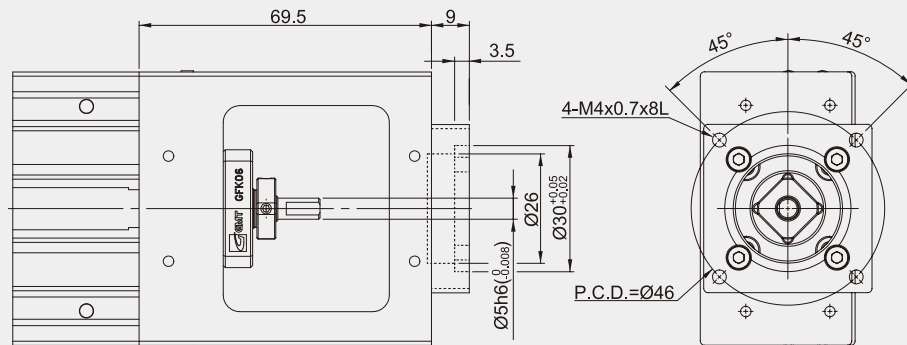
GK□3065 Motor mount bases assembled directly

Drawing for reference only



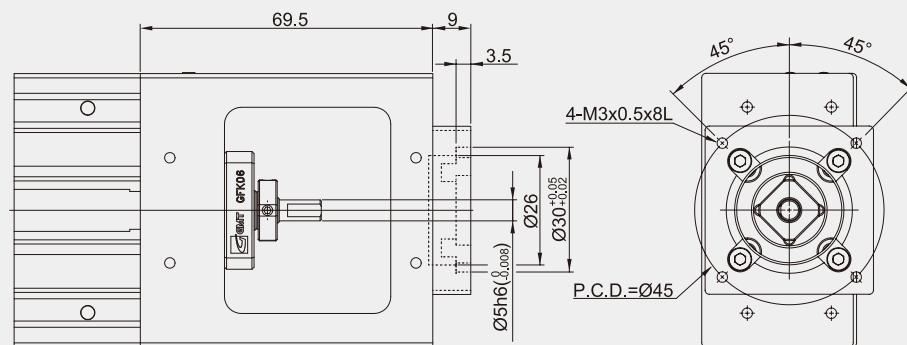
GK□3065 Motor mount bases / Motor adapt mountings (GK-H)

Can be compatible with Delta 100W, Mitsubishi 50W & 100W



GK□3065 Motor mount bases / Motor adapt mountings (GK-M)

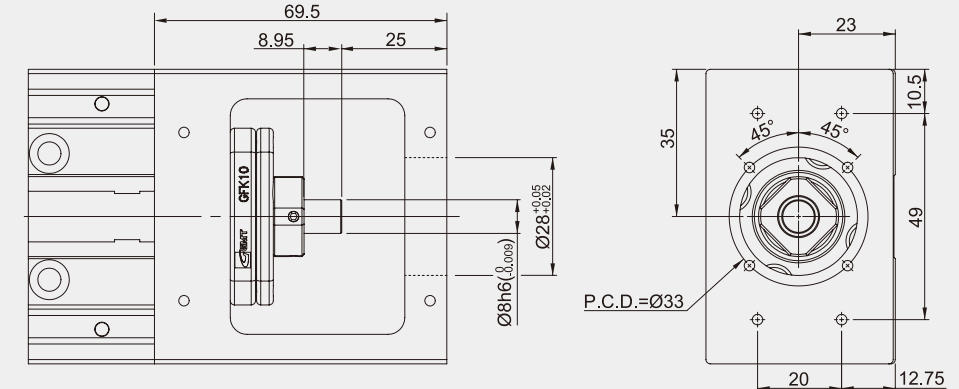
Can be compatible with Panasonic 50W & 100W



## Servo Motor Mount Bases and Adapt Mountings

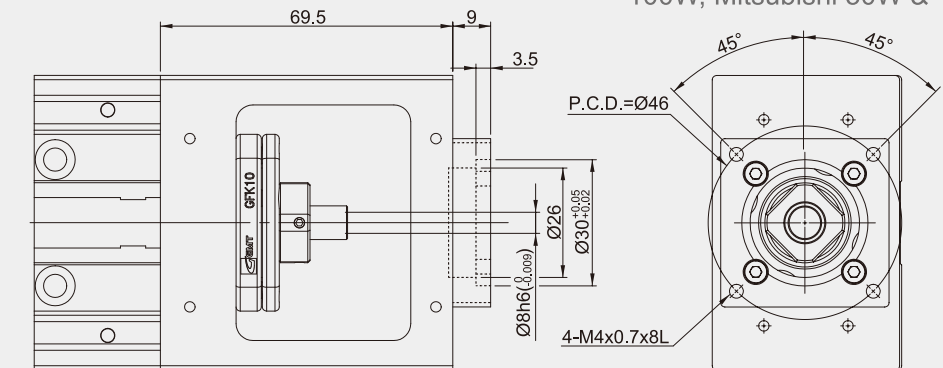
GK□4270 Motor mount bases assembled directly

Drawing for reference only



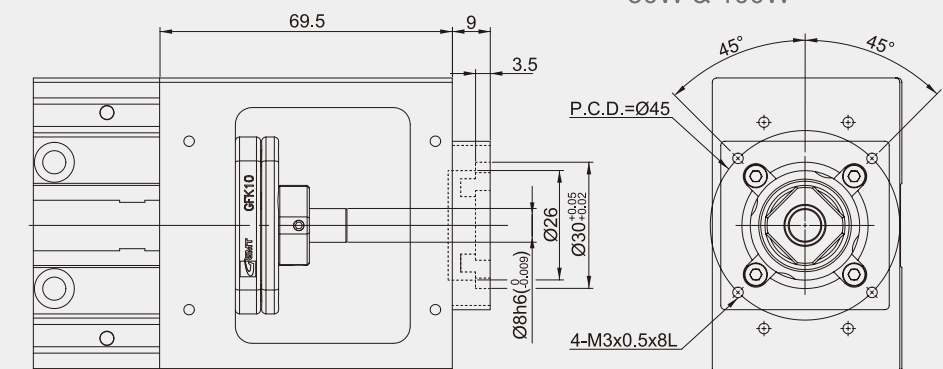
GK□4270 Motor mount bases / Motor adapt mountings (GK-H)

Can be compatible with Delta 100W, Mitsubishi 50W & 100W



GK□4270 Motor mount bases / Motor adapt mountings (GK-M)

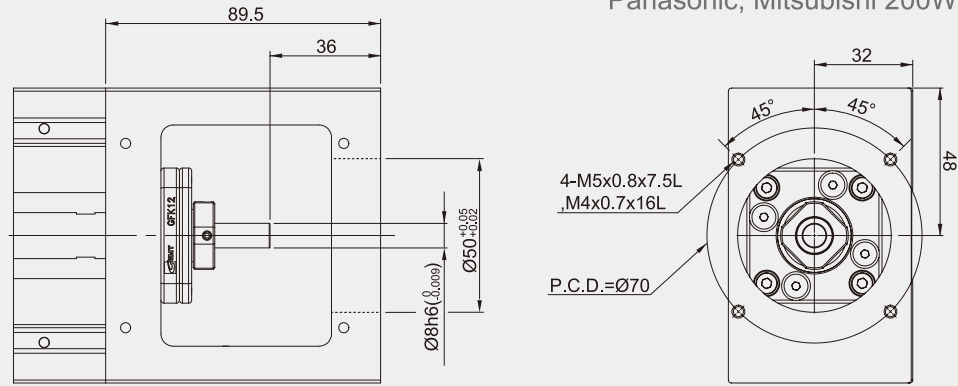
Can be compatible with Panasonic 50W & 100W



## Servo Motor Mount Bases and Adapt Mountings

GK□5496 Motor mount bases assembled directly

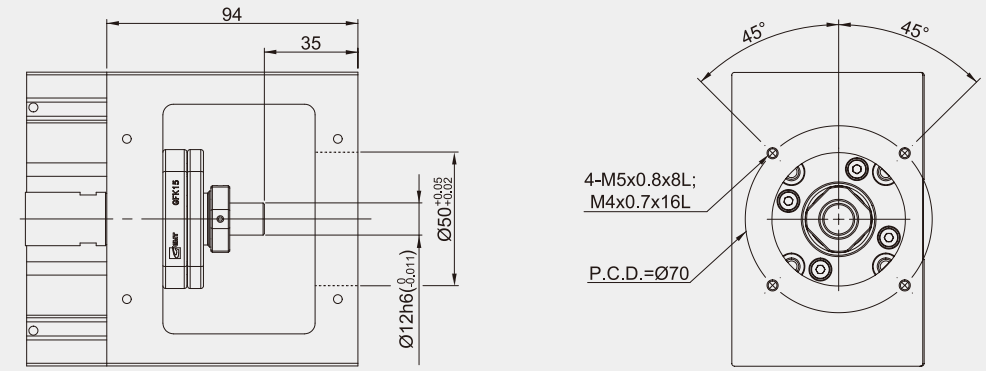
Can be compatible with Delta, Panasonic, Mitsubishi 200W & 400W



## Servo Motor Mount Bases and Adapt Mountings

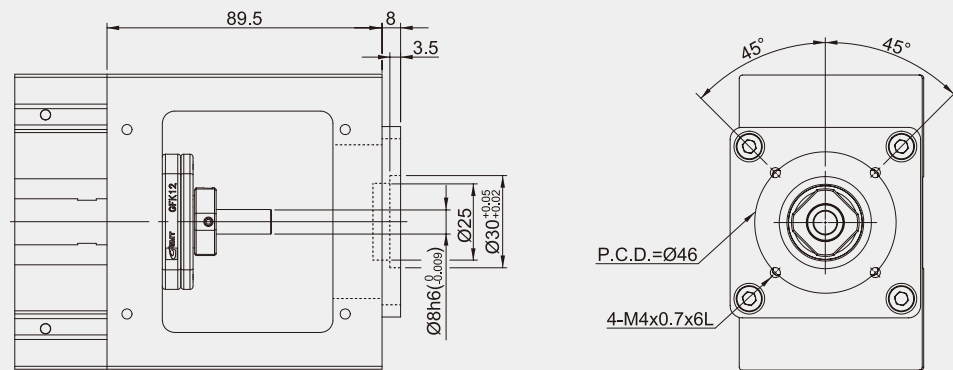
GK□60110 Motor mount bases assembled directly

Can be compatible with Delta, Panasonic, Mitsubishi 200W & 400W



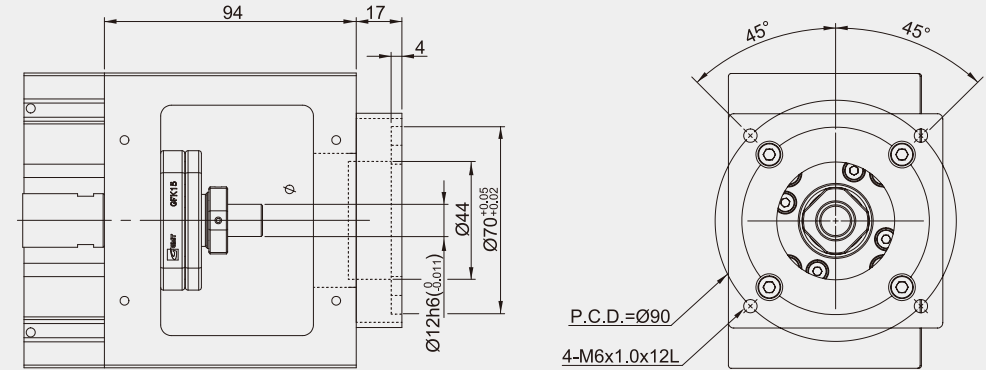
GK□5496 Motor mount bases / Motor adapt mountings (GK-H1)

Can be compatible with Delta 100W, Mitsubishi 50W & 100W



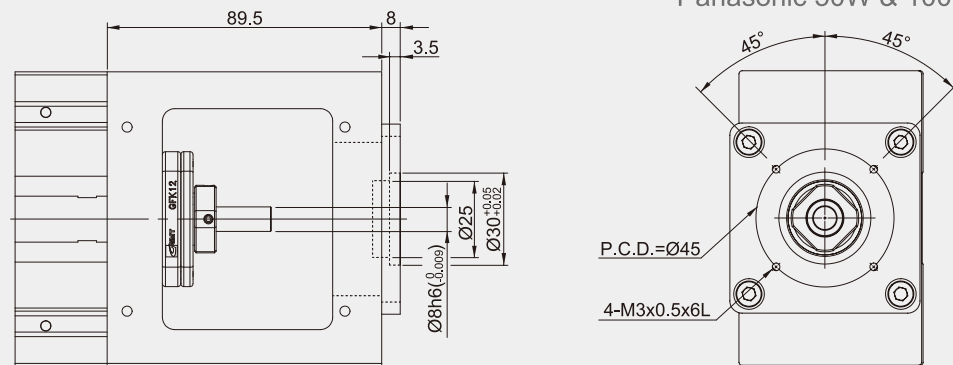
GK□60110 Motor mount bases / Motor adapt mountings (GK-H8)

Can be compatible with Delta, Mitsubishi 750W



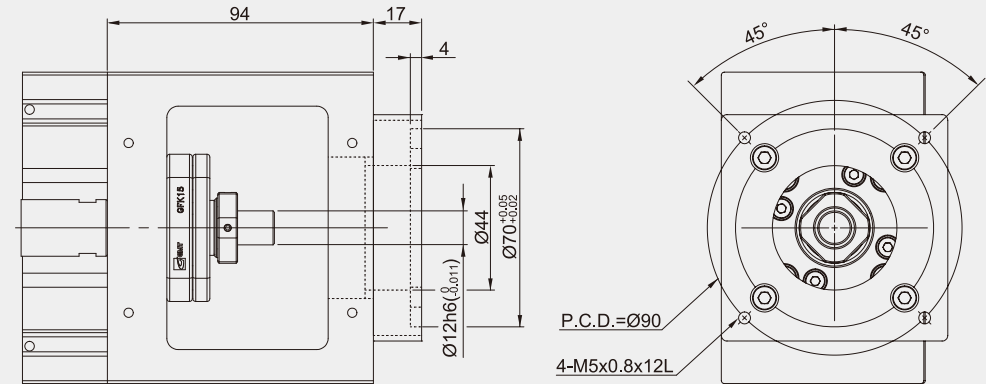
GK□5496 Motor mount bases / Motor adapt mountings (GK-M1)

Can be compatible with Panasonic 50W & 100W



GK□60110 Motor mount bases / Motor adapt mountings (GK-M8)

Can be compatible with Panasonic 750W





- ⊙ “N/A” Not applicable
- ⊙ Option on request

### Coupling Selection Recommendations

Motor Type	Motor Brand	Motor Model			GK□2040	GK□2650	GK□3060	GK□4580																																															
		Single Shaft	Double Shaft																																																				
Servo Motor	Delta	ECMA-C□040F			FACHS19-4*8 (S08)	FACCL21-5*8 (C08)	FACCL21-5*8 (C08)	N/A																																															
		ECMA-C□0401			N/A			N/A	N/A	FACHL40-8*8 (C08)																																													
		ECMA-C□0602								N/A	N/A	N/A	FACHL40-8*14 (C14)																																										
		ECMA-C□0604											N/A	N/A	N/A	N/A																																							
		ECMA-C□0807														N/A	N/A	N/A	N/A																																				
	Panasonic	MSMD5A			FACHS19-4*8 (S08)	FACCL21-5*8 (C08)	FACCL21-5*8 (C08)	N/A																																															
		MSME5A			N/A			N/A	N/A	FACHL40-8*8 (C08)																																													
		MSMD01								N/A	N/A	N/A	FACHL40-8*11 (C11)																																										
		MSME01											N/A	N/A	N/A	FACHL40-8*14 (C14)																																							
		MSMD02														N/A	N/A	N/A	N/A																																				
		MSME02																	N/A	N/A	N/A	N/A																																	
		MHMD02																				N/A	N/A	N/A	N/A																														
		MSMD04																							N/A	N/A	N/A	N/A																											
		MSME04																										N/A	N/A	N/A	N/A																								
		MHMD04																													N/A	N/A	N/A	N/A																					
		MDME04																																N/A	N/A	N/A	N/A																		
		MSMD08																																			N/A	N/A	N/A	N/A															
		MSME08																																						N/A	N/A	N/A	N/A												
		MHMD08																																									N/A	N/A	N/A	N/A									
		MDME08																																												N/A	N/A	N/A	N/A						
		HG-KR053																																															N/A	N/A	N/A	N/A			
		HG-MR053																																																		N/A	N/A	N/A	N/A
		HG-KR13																																																					N/A
	Misubishi	HG-MR13			N/A	N/A	N/A	FACHL40-8*8 (C08)																																															
		HG-KR23						N/A	N/A	N/A	FACHL40-8*14 (C14)																																												
		HG-MR23									N/A	N/A	N/A	N/A																																									
		HR-KR43												N/A	N/A	N/A	N/A																																						
		HG-MR43															N/A	N/A	N/A	N/A																																			
		HG-KR73																		N/A	N/A	N/A	N/A																																
		HK-MR73																					N/A	N/A	N/A	N/A																													
																										N/A	N/A	N/A	N/A																										
																													N/A	N/A	N/A	N/A																							
																																N/A	N/A	N/A	N/A																				
			N/A	N/A	N/A	N/A																																																	
Stepper Motor	GMT	2MS-N28U32A			FACHS19-4*5 (S05)	FACCL21-5*5 (C05)	FACCL21-5*5 (C05)	N/A																																															
		2MS-N42U47A			N/A			N/A	N/A	N/A																																													
		2MS-N57U76A								N/A	N/A	N/A	FACHL40-8*6.35 (C6.35)																																										
		103H5210-0440											N/A	N/A	N/A	N/A																																							
		103F5510-8241														N/A	N/A	N/A	N/A																																				
	Sanyo	103H7823-0140			FACHS19-4*5 (S05)	FACCL21-5*5 (C05)	FACCL21-5*5 (C05)	N/A																																															
		SM5603-8241			N/A			N/A	N/A	FACHL40-8*8 (C08)																																													
		PKP246D23A								N/A	N/A	N/A	N/A																																										
		PKP546N18A											N/A	N/A	N/A	N/A																																							
		PKP569FN24AW														N/A	N/A	N/A	N/A																																				
	Oriental	PKP246N23B			FACHS19-4*5 (S05)	FACCL21-5*5 (C05)	FACCL21-5*5 (C05)	N/A																																															
		PKP546N18B			N/A			N/A	N/A	N/A																																													
		PKP569FN24AW								N/A	N/A	N/A	N/A																																										
													N/A	N/A	N/A	N/A																																							
																N/A	N/A	N/A	N/A																																				
			N/A	N/A	N/A	N/A																																																	

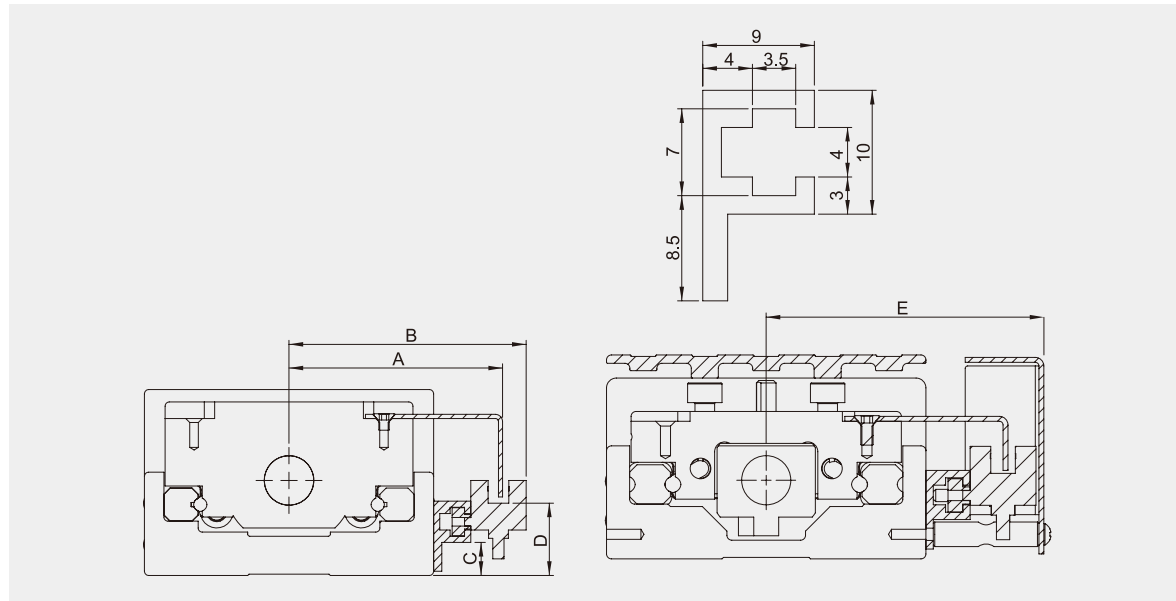
- ⊙ “N/A” Not applicable
- ⊙ Option on request

### Coupling Selection Recommendations

Motor Type	Motor Brand	Motor Model			GK□3065	GK□4270	GK□5496	GK□60110																																																
		Single Shaft	Double Shaft																																																					
Servo Motor	Delta	ECMA-C□0401			FACCL21-5*8 (C08)	FACCL21-8*8 (C08)	FACCL34-8*8 (C08)	N/A																																																
		ECMA-C□0602			N/A			N/A	N/A	FACCL34-8*14 (C14)																																														
		ECMA-C□0604								N/A	N/A	N/A	FACCL46-12*14 (C14)																																											
		ECMA-C□0807											N/A	N/A	N/A	FACCL46-12*19 (C19)																																								
	Panasonic	MSMD5A			FACCL21-5*8 (C08)	FACCL21-8*8 (C08)	FACCL34-8*8 (C08)	N/A																																																
		MSME5A						N/A	N/A	N/A	FACHL40-8*8 (C08)																																													
		MSMD01									N/A	N/A	N/A	FACHL40-8*11 (C11)																																										
		MSME01												N/A	N/A	N/A	FACHL40-8*14 (C14)																																							
		MSMD02															N/A	N/A	N/A	N/A																																				
		MSME02																		N/A	N/A	N/A	N/A																																	
		MHMD02																					N/A	N/A	N/A	N/A																														
		MSMD04																								N/A	N/A	N/A	N/A																											
		MSME04																											N/A	N/A	N/A	N/A																								
		MHMD04																														N/A	N/A	N/A	N/A																					
		MDME04																																	N/A	N/A	N/A	N/A																		
		MSMD08																																				N/A	N/A	N/A	N/A															
		MSME08																																							N/A	N/A	N/A	N/A												
		MHMD08																																										N/A	N/A	N/A	N/A									
		MDME08																																													N/A	N/A	N/A	N/A						
		HG-KR053																																																N/A	N/A	N/A	N/A			
		HG-MR053																																																			N/A	N/A	N/A	N/A
		HG-KR13																																																						N/A
	Misubishi	HG-MR13			N/A	N/A	N/A	FACHL40-8*8 (C08)																																																
		HG-KR23						N/A	N/A	N/A	FACHL40-8*14 (C14)																																													
		HG-MR23									N/A	N/A	N/A	N/A																																										
		HR-KR43												N/A	N/A	N/A	N/A																																							
		HG-MR43															N/A	N/A	N/A	N/A																																				
		HG-KR73																		N/A	N/A	N/A	N/A																																	
		HK-MR73																					N/A	N/A	N/A	N/A																														
																										N/A	N/A	N/A	N/A																											
																													N/A	N/A	N/A	N/A																								
																																N/A	N/A	N/A	N/A																					
				N/A	N/A	N/A	N/A																																																	
Stepper Motor	GMT	2MS-N42U47A			FATCL21-5*5 (T05)	FATCL21-8*5 (T05)	N/A	N/A																																																
		2MS-N57U76A			N/A			N/A	N/A	FATCL46-8*6.35 (T6.35)																																														
	Sanyo	103H5210-0440			FATCL21-5*5 (T05)	FATCL21-8*5 (T05)	N/A	N/A																																																
		103F5510-8241			N/A			N/A	N/A	N/A																																														
		103H7823-0140								N/A	N/A	N/A	N/A																																											
		SM5603-8241											N/A	N/A	N/A	N/A																																								
		PKP246D23A														N/A	N/A	N/A	N/A																																					
	Oriental	PKP546N18A			FATCL21-5*5 (T05)	FATCL21-8*5 (T05)	N/A	N/A																																																
		PKP569FN24AW			N/A			N/A	N/A	N/A																																														
										N/A	N/A	N/A	N/A																																											

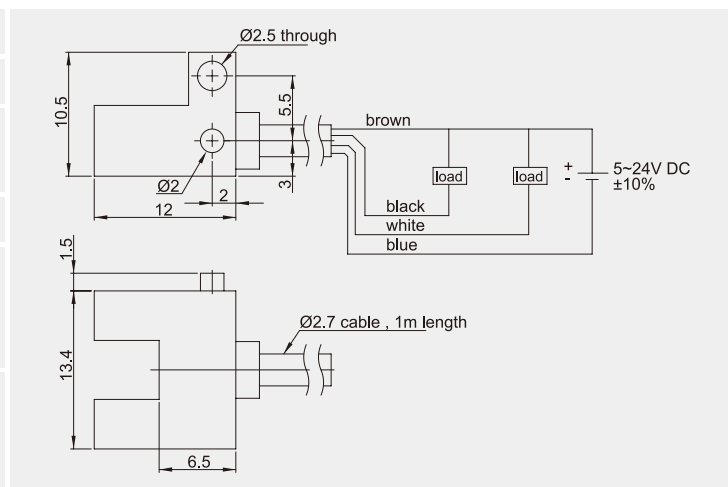
◎ Sensor rail set selection, please refer to P.49 ~ P.50°

## Sensor Rail Set Installation Diagrams



Model	A	B	C	D	E
GK□2040	36.2	42.4	1	10.4	-
GK□2650	41.2	47.4	7	16.5	
GK□3060	46.2	52.4	7	16.4	
GK□4580	56.2	62.4	13	22.4	
GK□3065	49.2	54.9			
GK□4270	51.7	57.4	8	17.6	59
GK□5496	64.2	70.4			72
GK□60110	71.2	77.4			79

Brand	Panasonic
Model	PM-F25
Power Supply Voltage	5~24V DC±10% Pulsation: Under P-P10%
Current Sinking	15mA以下
Output	NPN type Black : Light on White : Shading dark on
Reaction Time	Light: under 20μs Shading dark: under 100μs以下 (Reaction frequency: above 1KHz以上)



- ◎ Apply to both GKA and GKS series
- ◎ Option on request

## Sensor Rail Sets

Model	With Sensor Rail Set (no sensor)	With Sensor Rail Sets and Sensor*3
GK□2040-30	GK□2040-30-SG	GK□2040-30-SP
GK□2040-80	GK□2040-80-SG	GK□2040-80-SP
GK□2650-60	GK□2650-60-SG	GK□2650-60-SP
GK□2650-110	GK□2650-110-SG	GK□2650-110-SP
GK□2650-160	GK□2650-160-SG	GK□2650-160-SP
GK□2650-210	GK□2650-210-SG	GK□2650-210-SP
GK□3060-50	GK□3060-50-SG	GK□3060-50-SP
GK□3060-100	GK□3060-100-SG	GK□3060-100-SP
GK□3060-200	GK□3060-200-SG	GK□3060-200-SP
GK□3060-300	GK□3060-300-SG	GK□3060-300-SP
GK□3060-400	GK□3060-400-SG	GK□3060-400-SP
GK□3060-500	GK□3060-500-SG	GK□3060-500-SP
GK□4580-200	GK□4580-200-SG	GK□4580-200-SP
GK□4580-300	GK□4580-300-SG	GK□4580-300-SP
GK□4580-400	GK□4580-400-SG	GK□4580-400-SP
GK□4580-500	GK□4580-500-SG	GK□4580-500-SP
GK□4580-600	GK□4580-600-SG	GK□4580-600-SP
GK□4580-700	GK□4580-700-SG	GK□4580-700-SP
GK□4580-800	GK□4580-800-SG	GK□4580-800-SP

- ☉ Apply to both GKA and GKS series
- ☉ Option on request

### Sensor Rail Sets

Model	With Sensor Rail Set (no sensor)	With Sensor Rail Sets and Sensor*3
GK□3065-67	GK□3065-67-SG	GK□3065-67-SP
GK□3065-117	GK□3065-117-SG	GK□3065-117-SP
GK□3065-167	GK□3065-167-SG	GK□3065-167-SP
GK□3065-217	GK□3065-217-SG	GK□3065-217-SP
GK□4270-63	GK□4270-63-SG	GK□4270-63-SP
GK□4270-113	GK□4270-113-SG	GK□4270-113-SP
GK□4270-213	GK□4270-213-SG	GK□4270-213-SP
GK□4270-313	GK□4270-313-SG	GK□4270-313-SP
GK□4270-413	GK□4270-413-SG	GK□4270-413-SP
GK□4270-513	GK□4270-513-SG	GK□4270-513-SP
GK□5496-229	GK□5496-229-SG	GK□5496-229-SP
GK□5496-329	GK□5496-329-SG	GK□5496-329-SP
GK□5496-429	GK□5496-429-SG	GK□5496-429-SP
GK□5496-529	GK□5496-529-SG	GK□5496-529-SP
GK□5496-629	GK□5496-629-SG	GK□5496-629-SP
GK□5496-829	GK□5496-829-SG	GK□5496-829-SP
GK□60110-849	GK□60110-849-SG	GK□60110-849-SP
GK□60110-949	GK□60110-949-SG	GK□60110-949-SP
GK□60110-1049	GK□60110-1049-SG	GK□60110-1049-SP
GK□60110-1149	GK□60110-1149-SG	GK□60110-1149-SP
GK□60110-1249	GK□60110-1249-SG	GK□60110-1249-SP

- ☉ Apply to both GKA and GKS series
- ☉ The material is aluminum
- ☉ Option on request

### Dustproof Covers

Model	With Dustproof Cover	Model	With Dustproof Cover
GK□2040-30	GK□2040-30-C	GK□3065-67	GK□3065-67-C
GK□2040-80	GK□2040-80-C	GK□3065-117	GK□3065-117-C
GK□2650-60	GK□2650-60-C	GK□3065-167	GK□3065-167-C
GK□2650-110	GK□2650-110-C	GK□3065-217	GK□3065-217-C
GK□2650-160	GK□2650-160-C	GK□4270-63	GK□4270-63-C
GK□2650-210	GK□2650-210-C	GK□4270-113	GK□4270-113-C
GK□3060-50	GK□3060-50-C	GK□4270-213	GK□4270-213-C
GK□3060-100	GK□3060-100-C	GK□4270-313	GK□4270-313-C
GK□3060-200	GK□3060-200-C	GK□4270-413	GK□4270-413-C
GK□3060-300	GK□3060-300-C	GK□4270-513	GK□4270-513-C
GK□3060-400	GK□3060-400-C	GK□5496-229	GK□5496-229-C
GK□3060-500	GK□3060-500-C	GK□5496-329	GK□5496-329-C
GK□4580-200	GK□4580-200-C	GK□5496-429	GK□5496-429-C
GK□4580-300	GK□4580-300-C	GK□5496-529	GK□5496-529-C
GK□4580-400	GK□4580-400-C	GK□5496-629	GK□5496-629-C
GK□4580-500	GK□4580-500-C	GK□5496-829	GK□5496-829-C
GK□4580-600	GK□4580-600-C	GK□60110-849	GK□60110-849-C
GK□4580-700	GK□4580-700-C	GK□60110-949	GK□60110-949-C
GK□4580-800	GK□4580-800-C	GK□60110-1049	GK□60110-1049-C
		GK□60110-1149	GK□60110-1149-C
		GK□60110-1249	GK□60110-1249-C

- ⊙ Apply to both GKA and GKS series
- ⊙ The material is aluminum
- ⊙ **Option on request**

### Sensor Set Protection Covers

Model	With Sensor Protection Cover	Model	With Sensor Protection Cover
GK□3065-67	GK□3065-67-CS	GK□5496-229	GK□5496-229-CS
GK□3065-117	GK□3065-117-CS	GK□5496-329	GK□5496-329-CS
GK□3065-167	GK□3065-167-CS	GK□5496-429	GK□5496-429-CS
GK□3065-217	GK□3065-217-CS	GK□5496-529	GK□5496-529-CS
GK□4270-63	GK□4270-63-CS	GK□5496-629	GK□5496-629-CS
GK□4270-113	GK□4270-113-CS	GK□5496-829	GK□5496-829-CS
GK□4270-213	GK□4270-213-CS	GK□60110-849	GK□60110-849-CS
GK□4270-313	GK□4270-313-CS	GK□60110-949	GK□60110-949-CS
GK□4270-413	GK□4270-413-CS	GK□60110-1049	GK□60110-1049-CS
GK□4270-513	GK□4270-513-CS	GK□60110-1149	GK□60110-1149-CS
		GK□60110-1249	GK□60110-1249-CS

### Speed Calculation

#### 1 Max. Linear Velocity

Maximum linear velocity (V) is calculated from the motor speed (S) multiplied by the lead (L).

$$V \left( \frac{\text{mm}}{\text{s}} \right) = \left( \frac{S(\text{rpm})}{60} \right) \times L(\text{mm})$$

#### 2 Acceleration / Deceleration

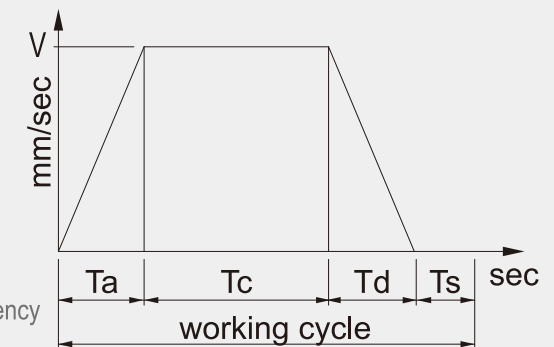
- ① The speed here is referred to the working speed set by the stage. The acceleration needs to start from static status, and it will deceleration before it arrives at the end of destination.
- ② The setting of acceleration / deceleration is adjusted by user depends on the actual working environment.
- ※ **Inertia load will be derived from acceleration / deceleration. The higher the drop height between acceleration and deceleration is the stronger impact will be caused, and the lighter weight can be carried only. It shall be avoided while setting.**

#### 3 Working Cycle

Working cycle is determined by the user.

The below diagram illustrates how the working cycle works, including the formulas of acceleration time  $T_a$ , constant speed time  $T_c$ , deceleration time  $T_d$ , and retention time  $T_s$ .

- ⊙ Acceleration:  $\frac{V}{T_a}$
- ⊙ Deceleration:  $\frac{V}{T_d}$
- ⊙ Working cycle:  $T_a + T_c + T_d + T_s$
- ⊙ Working cycle = Working cycle x Frequency



### Life Calculation

#### Linear Guidway

$$M = \left( \frac{f_t}{f_w} \cdot \frac{C}{f_n} \right)^3 \times 50 \text{ km}$$

- ⊙ M : Rated life (km)
- ⊙ C : Basic rated dynamic loading (N)
- ⊙ f<sub>n</sub> : Axis working load (N)
- ⊙ f<sub>t</sub> : Contact factor (Table A)
- ⊙ f<sub>w</sub> : Load factor (Table B)

表A Contact Factor (f<sub>t</sub>)

1.0

表B

Working Environment		Load Factor (f <sub>w</sub> )
Load Condition	Speed (V)	
No impact & vibration	Low-speed V<15 m/min	1.0 ~ 1.5
Normal load	Medium-speed 15<V<60 m/min	1.5 ~ 2.0
With impacts & vibration	High-speed V>60 m/min	2.0 ~ 3.5

#### Ball Screw & Bearing

$$M = \left( \frac{1}{f_w} \cdot \frac{C}{f_a} \right)^3 \times 10^6 \text{ rev}$$

- ⊙ M : Rated life (km)
- ⊙ C : Basic rated dynamic loading (N)
- ⊙ f<sub>a</sub> : Axis working load (N)
- ⊙ f<sub>w</sub> : Load factor (Table B)

### Testing Method

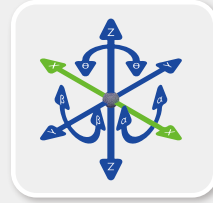
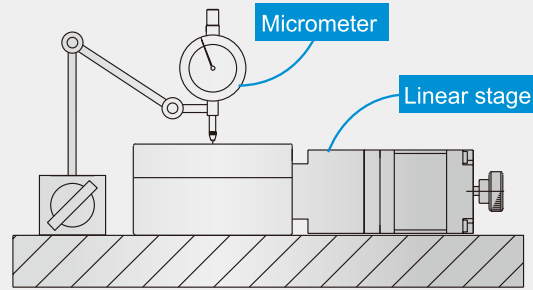
Testing equipment : a laser interferometer or Zeiss coordinate measuring machine. The foundation of the stage should be fixed during the operation, while only the upper stage is working at the same time.

**Positioning Precision (Unit : μm)**  
 Within a predetermined stroke, set a laser interferometer or CMM for the measurement and start working a homing linear stage to an unspecified point in a fixed direction. As the motion is done, record the difference has occurred between the actual and target movement values. The difference is referred to as a positioning precision.

**Repeatability Positioning Precision (Unit : ±μm)**  
 At the first half of the test of repeatability precision, the positioning test should have been repeated for seven times. Then record the maximum difference and the path including it to be used to perform the next step. With half value of the difference, test for the other differences at midpoint / both ends of the previous path and thence record the maximum again, which is referred to as a repeatability positioning precision.

**Missed Step (The Losses of Distance Since a Reverse Rotation) (Unit : μm)**  
 Within a predetermined stroke, set a laser interferometer or CMM for the measurement and start working a homing linear stage to an unspecified point by giving a command of positive direction, once the movement is completed, record the difference between the actual and target values. Simultaneously, give a same value of movement command of negative direction with which the stage will be moved back, then record another difference as the motion completed, and continue to do the next repetition. After the seven repetitions are done, an average value of all the differences recorded is finally referred to as a missed step.

## Testing Method

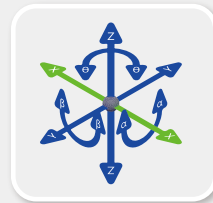
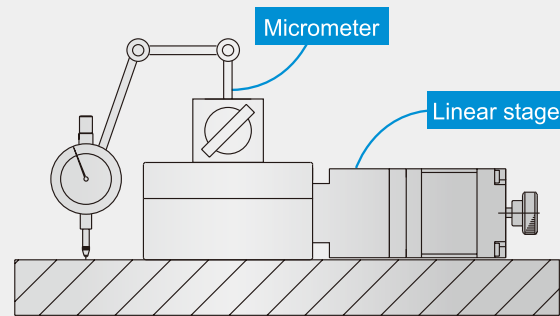


Testing equipment : a micrometer or Zeiss coordinate measuring machines.  
The foundation of the stage should be fixed during the operation, while only the meter is moving at the same time.



### Parallelism [ Unit : $\mu\text{m}$ ]

Place a homing stage onto granite workbench and set a micrometer to measure the maximum level difference at middle area of the stage (or use Zeiss coordinate measuring machines), and referred to as a parallelism.



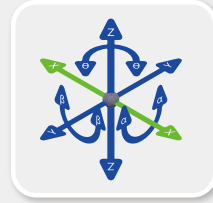
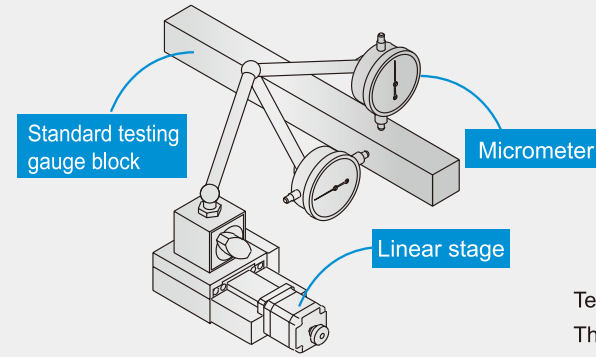
Testing equipment : a micrometer.  
The foundation of the stage should be fixed during the operation, while only the upper stage is working at the same time.



### Dynamic Parallelism [ Unit : $\mu\text{m}$ ]

Place the micrometer onto the stage surface to measure the maximum level difference by measuring on the granite workbench while the stage is working, then referred to as a dynamic parallelism.

## Testing Method



Testing equipment : a micrometer.  
The foundation of the stage should be fixed during the operation, while only the upper stage is working at the same time.



### Dynamic Straightness [ Unit : $\mu\text{m}$ ]

Within a predetermined stroke, from the starting position of the stage, start working the stage in a specific direction and use standard gauge block to as a basis to measure the differences between the actual and target values of the horizontal and vertical straightness. The maximum difference is referred to as a dynamic straightness.

## Order Form

Date :      Year      Month      Day

Sales No.		Customer No. / Name	
Applicant Name		Contact Person	
Tel		Fax	
Cell		Line / WeChat	
Add			
E-mail			

Model	<input type="checkbox"/> GKA (Aluminum) <input type="checkbox"/> GKS (Carbon steel)		
Size	<input type="checkbox"/> 2040 <input type="checkbox"/> 2650 <input type="checkbox"/> 3060 <input type="checkbox"/> 4580 <input type="checkbox"/> 3065 <input type="checkbox"/> 4270 <input type="checkbox"/> 5496 <input type="checkbox"/> 60110		
Rail Length	mm	Lead	P mm
Grade	<input type="checkbox"/> Precision <input type="checkbox"/> Standard		

Accessories	
Coupling Request	<input type="checkbox"/> No <input type="checkbox"/> Yes
Sensor Request	<input type="checkbox"/> No <input type="checkbox"/> Yes . Qty(    ) <input type="checkbox"/> Rail only
Dustproof Cover Request	<input type="checkbox"/> No <input type="checkbox"/> Yes
Sensor Set Protection Cover Request	<input type="checkbox"/> No <input type="checkbox"/> Yes

Motor	<input type="checkbox"/> Customer's own motor, Model no. _____ <input type="checkbox"/> To purchase on your behalf, Model no. _____	
2040 Motor Mount Base	Stepper motor	<input type="checkbox"/> GMT <input type="checkbox"/> 28 <input type="checkbox"/> GMT <input type="checkbox"/> 42 <input type="checkbox"/> Sanyo <input type="checkbox"/> 42 <input type="checkbox"/> Oriental <input type="checkbox"/> 42 <input type="checkbox"/> Others _____
	Servo motor	<input type="checkbox"/> Delta 50W <input type="checkbox"/> Panasonic 50W <input type="checkbox"/> Mitsubishi 50W <input type="checkbox"/> Others _____
2650 Motor Mount Base	Stepper motor	<input type="checkbox"/> GMT <input type="checkbox"/> 28 <input type="checkbox"/> GMT <input type="checkbox"/> 42 <input type="checkbox"/> Sanyo <input type="checkbox"/> 42 <input type="checkbox"/> Oriental <input type="checkbox"/> 42 <input type="checkbox"/> Others _____
	Servo motor	<input type="checkbox"/> Delta 50W 100W <input type="checkbox"/> Panasonic 50W 100W <input type="checkbox"/> Mitsubishi 50W 100W <input type="checkbox"/> Others _____
3060 Motor Mount Base	Stepper motor	<input type="checkbox"/> GMT <input type="checkbox"/> 42 <input type="checkbox"/> Sanyo <input type="checkbox"/> 42 <input type="checkbox"/> Oriental <input type="checkbox"/> 42 <input type="checkbox"/> Others _____
	Servo motor	<input type="checkbox"/> Delta 50W 100W <input type="checkbox"/> Panasonic 50W 100W <input type="checkbox"/> Mitsubishi 50W 100W <input type="checkbox"/> Others _____
4580 Motor Mount Base	Stepper motor	<input type="checkbox"/> GMT <input type="checkbox"/> 57 <input type="checkbox"/> Sanyo <input type="checkbox"/> 60 <input type="checkbox"/> Oriental <input type="checkbox"/> 60 <input type="checkbox"/> Others _____
	Servo motor	<input type="checkbox"/> Delta 100W <input type="checkbox"/> Delta 200W 400W <input type="checkbox"/> Panasonic 100W <input type="checkbox"/> Panasonic 200W 400W <input type="checkbox"/> Mitsubishi 100W <input type="checkbox"/> Mitsubishi 200W 400W <input type="checkbox"/> Others _____
3065 Motor Mount Base	Stepper motor	<input type="checkbox"/> GMT <input type="checkbox"/> 42 <input type="checkbox"/> Sanyo <input type="checkbox"/> 42 <input type="checkbox"/> Oriental <input type="checkbox"/> 42 <input type="checkbox"/> Others _____
	Servo motor	<input type="checkbox"/> Delta 100W <input type="checkbox"/> Panasonic 50W 100W <input type="checkbox"/> Mitsubishi 50W 100W <input type="checkbox"/> Others _____
4270 Motor Mount Base	Stepper motor	<input type="checkbox"/> GMT <input type="checkbox"/> 42 <input type="checkbox"/> Sanyo <input type="checkbox"/> 42 <input type="checkbox"/> Oriental <input type="checkbox"/> 42 <input type="checkbox"/> Others _____
	Servo motor	<input type="checkbox"/> Delta 100W <input type="checkbox"/> Panasonic 50W 100W <input type="checkbox"/> Mitsubishi 50W 100W <input type="checkbox"/> Others _____
5496 Motor Mount Base	Stepper motor	<input type="checkbox"/> GMT <input type="checkbox"/> 57 <input type="checkbox"/> Sanyo <input type="checkbox"/> 60 <input type="checkbox"/> Oriental <input type="checkbox"/> 60 <input type="checkbox"/> Others _____
	Servo motor	<input type="checkbox"/> Delta 100W <input type="checkbox"/> Panasonic 50W 100W <input type="checkbox"/> Mitsubishi 50W 100W <input type="checkbox"/> Others _____
60110 Motor Mount Base	Stepper motor	<input type="checkbox"/> GMT <input type="checkbox"/> 57 <input type="checkbox"/> Sanyo <input type="checkbox"/> 60 <input type="checkbox"/> Oriental <input type="checkbox"/> 60 <input type="checkbox"/> Others _____
	Servo motor	<input type="checkbox"/> Delta 750W <input type="checkbox"/> Panasonic 750W <input type="checkbox"/> Mitsubishi 750W <input type="checkbox"/> Others _____

MEMO

MEMO



MEMO

MEMO

MEMO