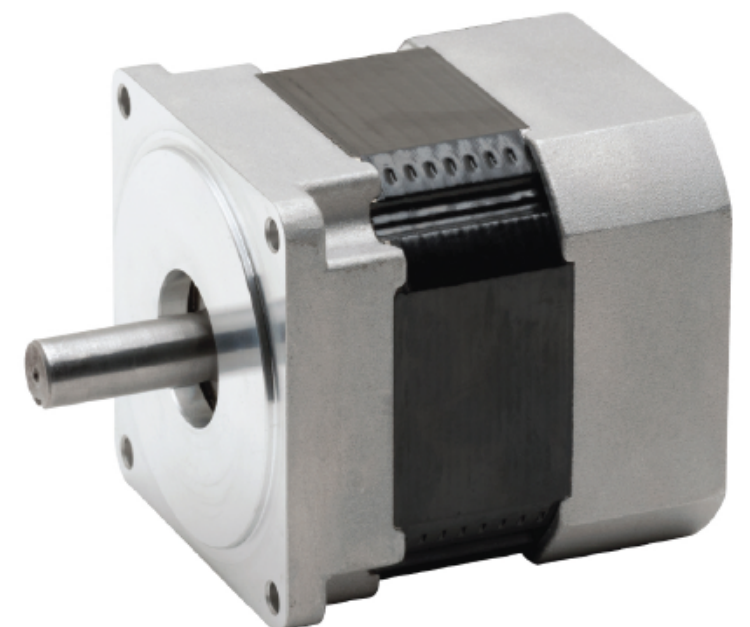
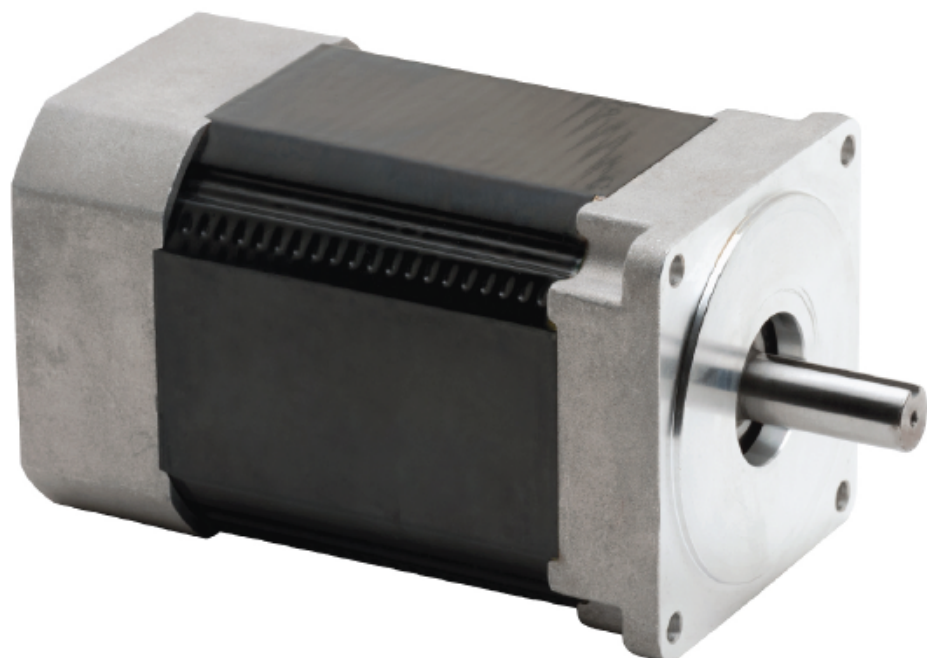
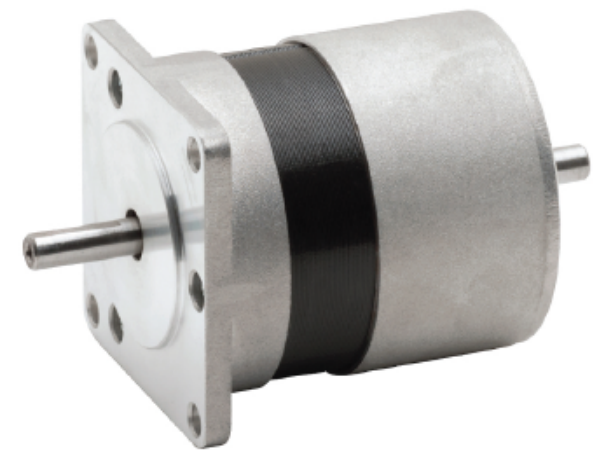
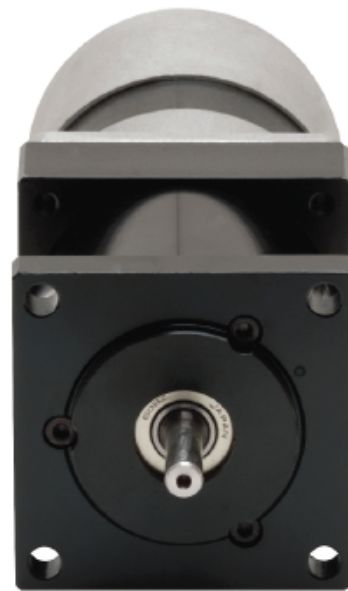
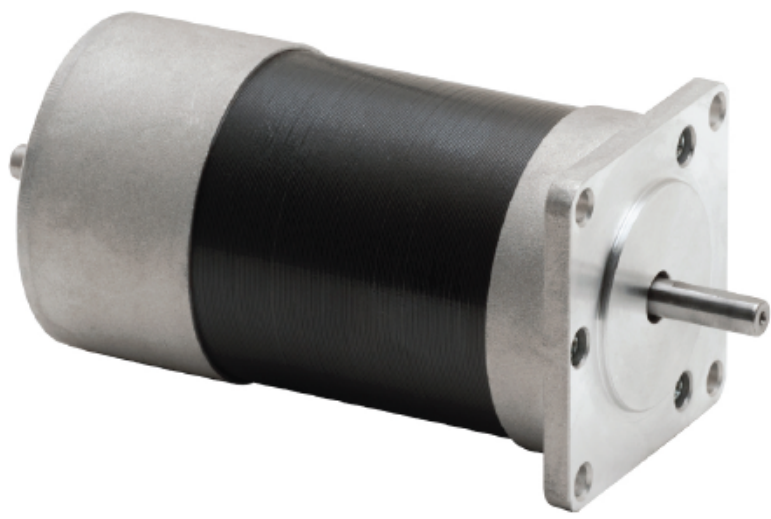
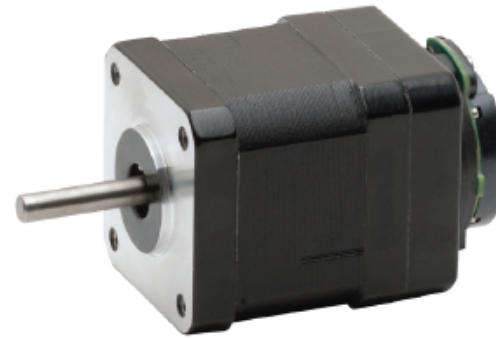
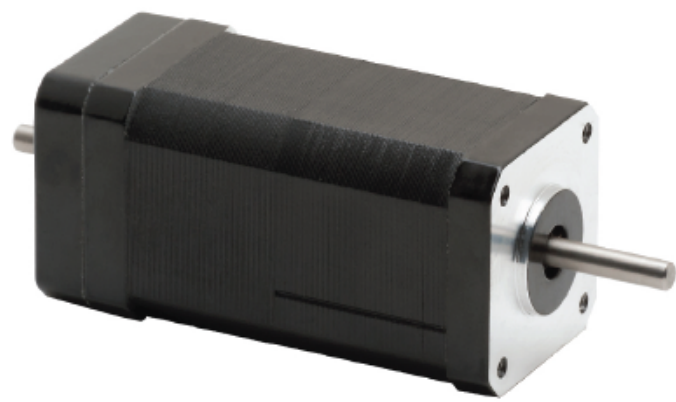


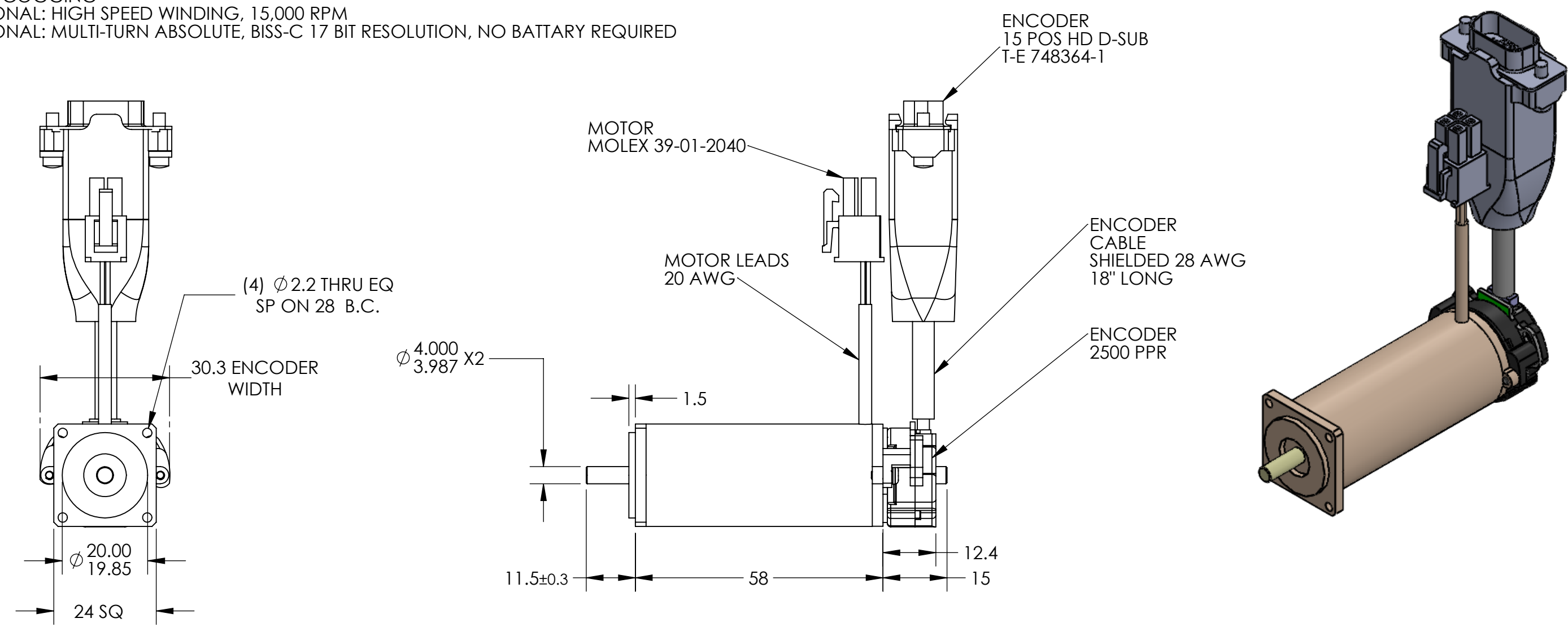


BRUSHLESS MOTORS



PART REVISION HISTORY					
REV.	DESCRIPTION	ECO	DWN	CHKD	DATE

- NOTES:
1. Kt AND Ke BASED PEAK SINE WAVE DRIVE
 2. 4 POLE DESIGN
 3. ZERO COGGING
 4. OPTIONAL: HIGH SPEED WINDING, 15,000 RPM
 5. OPTIONAL: MULTI-TURN ABSOLUTE, BISS-C 17 BIT RESOLUTION, NO BATTERY REQUIRED



MOTOR PARAMETERS		
		MP24-2B
NOMINAL VOLTAGE	VDC	24
NO LOAD SPEED	RPM	4615
RATE SPEED	RPM	2875
RATED TORQUE	Nm	0.1
PEAK TORQUE	Nm	0.3
CONTINUOUS CURRENT	AMPS	2
PEAK CURRENT	AMPS	6
VOLTAGE CONSTANT, Ke	V/KRPM	5.2
TORQUE CONSTANT, Kt	Nm/A	.049
RESISTANCE	OHM	3.02
INDUCTANCE	mH	0.177
MOMENT OF INERTIA	gm-cm ²	TBD
WEIGHT	kg	0.16

ENCODER WIRING		
POS	COLOR	FUNCTION
1	RED	5 VDC
2	BLACK	COMMON
3	BROWN	CHANNEL A
4	WHITE	CHANNEL A/
5	BLUE	CHANNEL B
6	GREEN	CHANNEL B/
7	ORANGE	INDEX
8	YELLOW	INDEX /
9		
10		
11	VIOLET	CHANNEL U
12	WHT/BRN	CHANNEL V
13	WHT/ORG	CHANNEL W
14		
15	SHIELD	SHIELD

MOTOR CONNECTOR		
POS	COLOR	VALUE
1	RED	PHASE R
2	BLACK	PHASE S
3	WHITE	PHASE T
4		

ENCODER SPECIFICATIONS	
TYPE	OPTICAL
OUTPUT TYPE	LINE DRIVER
LINE COUNT	2500
INPUT VOLTAGE	5 +/- 5%
CURRENT	50 mA
MAX FREQ	500 KHz *

NOTICE ON REPRODUCTIONS
 THIS DRAWING THE DESIGN AND THE PATENTS IT COVERS ARE THE PROPERTY OF CYMATIX, INC., OR THEIR CUSTOMERS. THEY WILL NOT BE REPRODUCED, COPIED, LOANED, EXHIBITED NOR USED EXCEPT IN THE LIMITED WAY AND THE PRIVATE USE PERMITTED BY THE CONSENT GIVEN BY THE LENDER TO THE BORROWER.



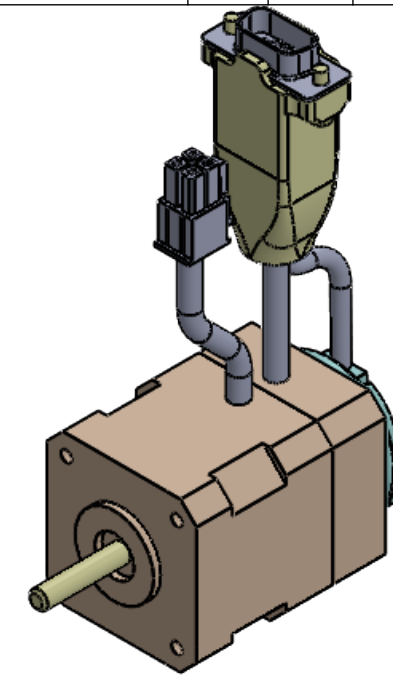
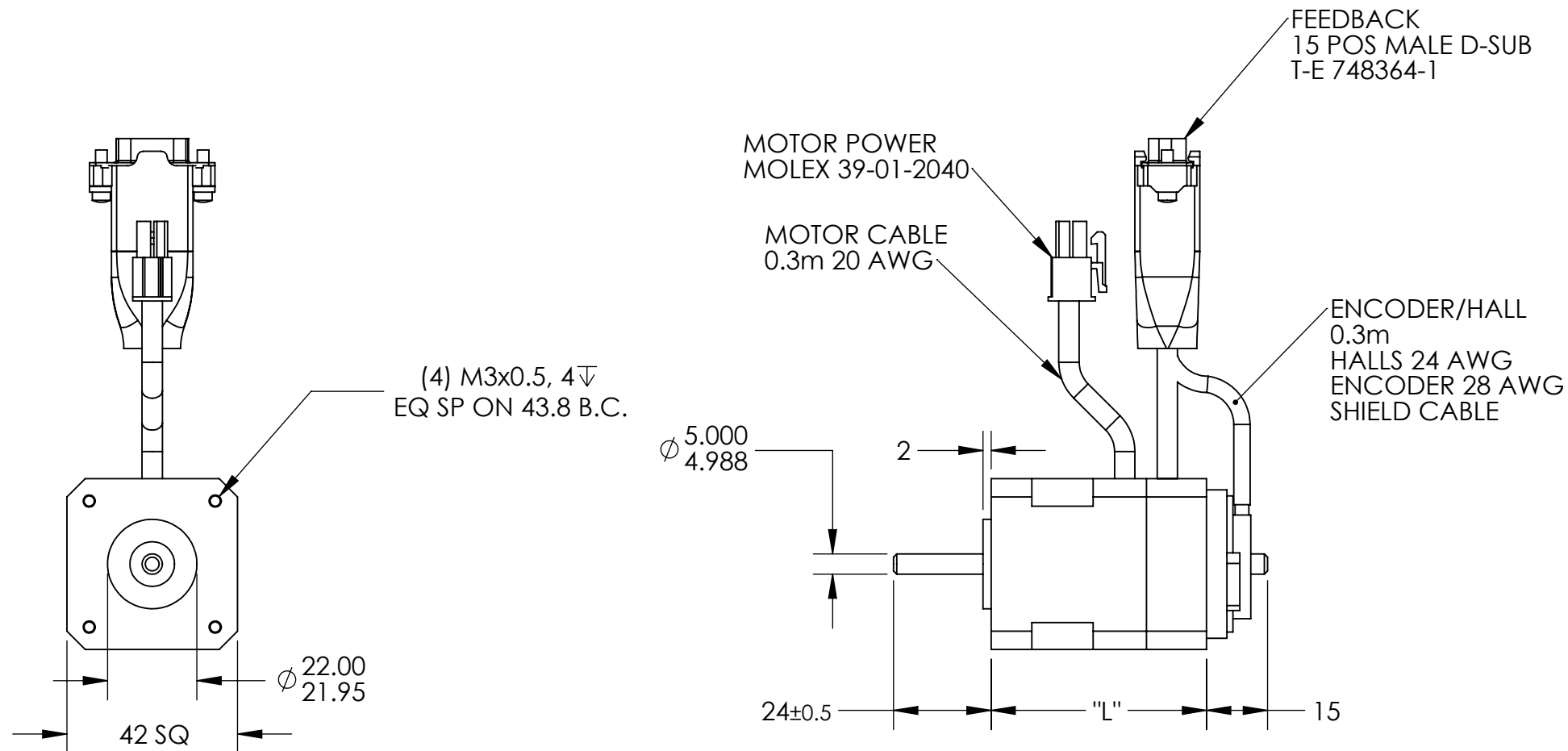
MATERIAL	TITLE:	BL MOTOR, 24mm, 24 VDC 2500 ppr ENCODER	
FINISH			
DRAWN	JPB	DATE	07/07/20
CHECKED	TPB	DATE	07/07/20
		SIZE	B
		THIRD ANGLE	
		PART NO.	MP24-2B-MX2500-NN-001
		PART REV.	A
		SCALE:	NONE
		SHEET	1 OF 1
		DWG. NO.	R

NOTES:

1. Kt AND Ke BASED ON PEAK SINE WAVE
2. 8 POLE DESIGN
OPTIONAL MULTI-TURN ABSOLUTE ENCODER
BISS-C OUTPUT, 17 BIT RESOLUTION, 16 BIT TURNS,
NO BATTERY REQUIRED
3. OPTIONAL FAIL SAFE BRAKE, 0.1 N-m, 24 VDC
ADD 49 mm TO "L"

PART REVISION HISTORY

REV.	DESCRIPTION	ECO	DWN	CHKD	DATE



MOTOR PARAMETERS		E017-1A	E017-2A	E017-3A
NOMINAL VOLTAGE	VDC	24	24	24
RATE SPEED	RPM	3000	3000	3000
RATED TORQUE	Nm	0.1	0.2	0.3
PEAK TORQUE	Nm	0.3	0.6	0.9
CONTINUOUS CURRENT	AMPS (RMS)	2.5	4.4	5.2
PEAK CURRENT	AMPS (RMS)	7.5	13.2	15.6
VOLTAGE CONSTANT, Ke	V/KRPM (RMS)	4.3	4.3	4.3
TORQUE CONSTANT, Kt	Nm/A (RMS)	.04	.04	.04
RESISTANCE	OHM	2.4	0.85	0.61
INDUCTANCE	mH	1.35	0.63	0.38
MOMENT OF INERTIA	Kg-cm ²	.042	.084	.126
"L" LENGTH	mm	53	72	90
WEIGHT	Kg	0.36	0.5	0.6

FEEDBACK		
Pin	Color	Function
1	Red	5 vdc
2	Black	GND
3	Brown	Chl A
4	White	Chl A/
5	Blue	Chl B
6	Green	Chl B/
7	Orange	Index
8	Yellow	Index/
9	Red	Hall 5 vdc
10	Black	Hall GND
11	Yellow	Hall A
12	Green	Hall B
13	Blue	Hall C
14		
15	Shield	Shield

MOTOR CONNECTOR		
MOLEX 39-01-2040		
POS	COLOR	VALUE
1	YELLOW	PHASE R
2	GREEN	PHASE S
3	BLUE	PHASE T
4		

NOTICE ON REPRODUCTIONS
THIS DRAWING THE DESIGN AND THE PATENTS IT COVERS ARE THE PROPERTY OF CYMATIX, INC., OR THEIR CUSTOMERS. THEY WILL NOT BE REPRODUCED, COPIED, LOANED, EXHIBITED NOR USED EXCEPT IN THE LIMITED WAY AND THE PRIVATE USE PERMITTED BY THE CONSENT GIVEN BY THE LENDER TO THE BORROWER.

TOLERANCES UNLESS OTHERWISE SPECIFIED (U.O.S.)
 DECIMALS .XX = ± .01
 .XXX = ± .005
 .XXXX = ± .0005
 C'BREAKS .010/.020
 FILLETS .020 MAX
 FRAC. 1/64
 MACH. FIN. 125
 ANGLES 1°



TITLE: BL MOTOR, NEMA17, 24 VDC
5000 PPR

DRAWN: JPB DATE: 02/08/22 SIZE: B THIRD ANGLE PART NO.: E017 -XA-MX5000-NN-001 PART REV.: A

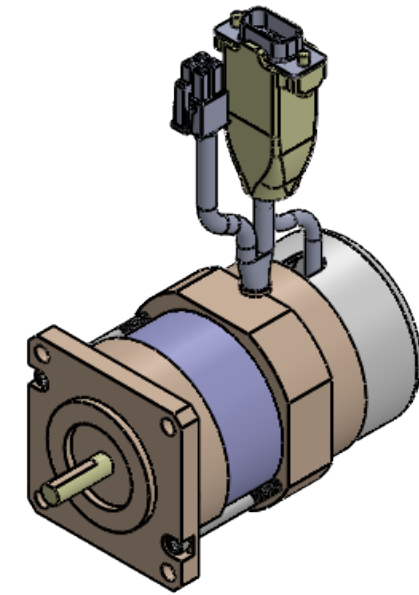
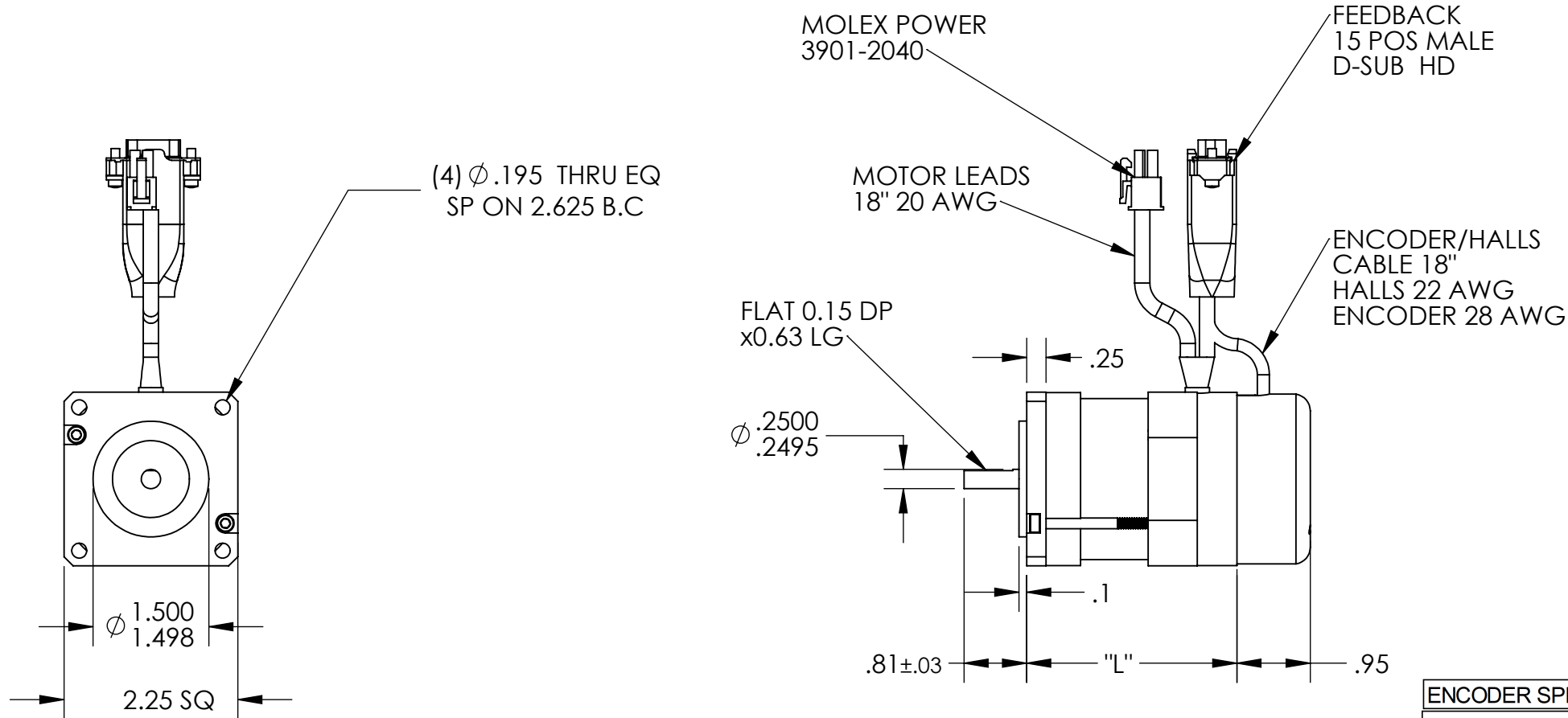
CHECKED: TPB DATE: 02/08/22 SCALE: NONE SHEET 1 OF 1 DWG.NO.: R

NOTES:

1. Kt AND Ke BASED ON PEAK SINE WAVE
2. 4 POLE DESIGN
3. OPTIONAL MULTI-TURN ABSOLUTE ENCODER
BISS-C OUTPUT, 17 BIT RESOLUTION, 16 BIT TURNS,
NO BATTERY REQUIRED
4. OPTIONAL 0.8 N-m FAIL SAFE BRAKE, 24 VDC
ADD 2.24" TO "L"

PART REVISION HISTORY

REV.	DESCRIPTION	ECO	DWN	CHKD	DATE



FEEDBACK		
T-E 748364-1		
Pin	Color	Function
1	Red	5 vdc
2	Black	GND
3	Brown	Chl A
4	White	Chl A/
5	Blue	Chl B
6	Green	Chl B/
7	Orange	Index
8	Yellow	Index/
9	Red	Hall 5 vdc
10	Black	Hall GND
11	Brown	Hall A
12	Orange	Hall B
13	Yellow	Hall C
14		
15	Shield	Shield

ENCODER SPECIFICATIONS	
TYPE	OPTICAL
OUTPUT TYPE	LINE DRIVER
LINE COUNT	5000 LINE
GATED	A / B AT 90 DEGREE
INPUT VOLTAGE	5 VDC +/- 5%
CURRENT	65 mA TYPICAL

MOTOR PARAMETERS				
		EP23-1A	EP23-2A	EP23-3A
MAX TERMINAL VOLTAGE	VDC	170	170	170
RATED SPEED	RPM	6000	6000	6000
RATED TORQUE	Oz-In	50	90	110
PEAK TORQUE	Oz-In	150	270	330
CONTINUOUS CURRENT	AMPS	3.6	5.2	7
PEAK CURRENT	AMPS	10.8	15.5	21.1
VOLTAGE CONSTANT, Ke	V/KRPM	11.2	14.0	12.6
TORQUE CONSTANT, Kt	Oz-In/A	15.1	18.9	17.0
RESISTANCE	OHM	2.09	1.16	0.58
INDUCTANCE	mH	1.6	1.1	0.54
MOMENT OF INERTIA	Oz-In-Sec ²	.0019	.0037	.0055
"L" LENGTH	INCH	2.8	3.8	4.8
WEIGHT	LBS	1.5	2.2	3

MOTOR CONNECTOR		
MOLEX 39-01-2040		
POS	COLOR	VALUE
1	RED	PHASE R
2	WHITE	PHASE S
3	BLUE	PHASE T
4	GREEN	CASE

NOTICE ON REPRODUCTIONS
THIS DRAWING THE DESIGN AND THE PATENTS IT COVERS ARE THE PROPERTY OF CYMATIX, INC., OR THEIR CUSTOMERS. THEY WILL NOT BE REPRODUCED, COPIED, LOANED, EXHIBITED NOR USED EXCEPT IN THE LIMITED WAY AND THE PRIVATE USE PERMITTED BY THE CONSENT GIVEN BY THE LENDER TO THE BORROWER.

TOLERANCES UNLESS OTHERWISE SPECIFIED (U.O.S.)
 DECIMALS .XX = ± .01
 .XXX = ± .005
 .XXXX = ± .0005
 C'BREAKS .010/.020
 FILLETS 1/64
 .020 MAX
 FRAC. 1/64
 ANGLES 1°
 MACH. FIN. 125



TITLE: NEMA 23 BRUSHLESS DC MOTOR

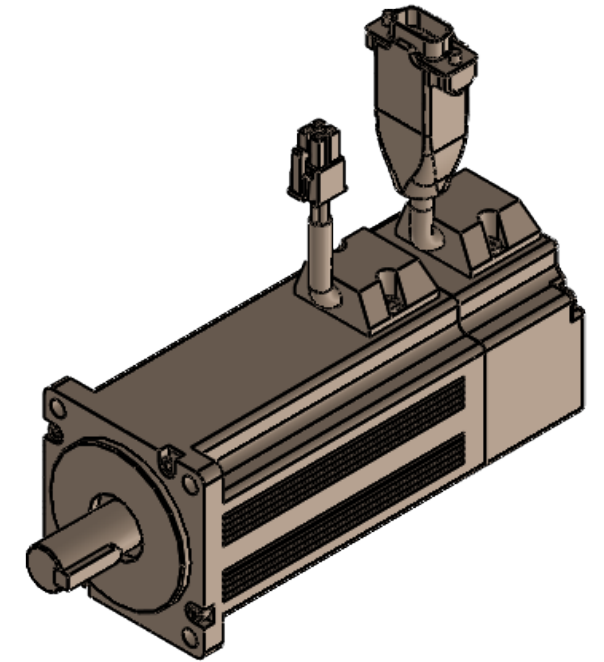
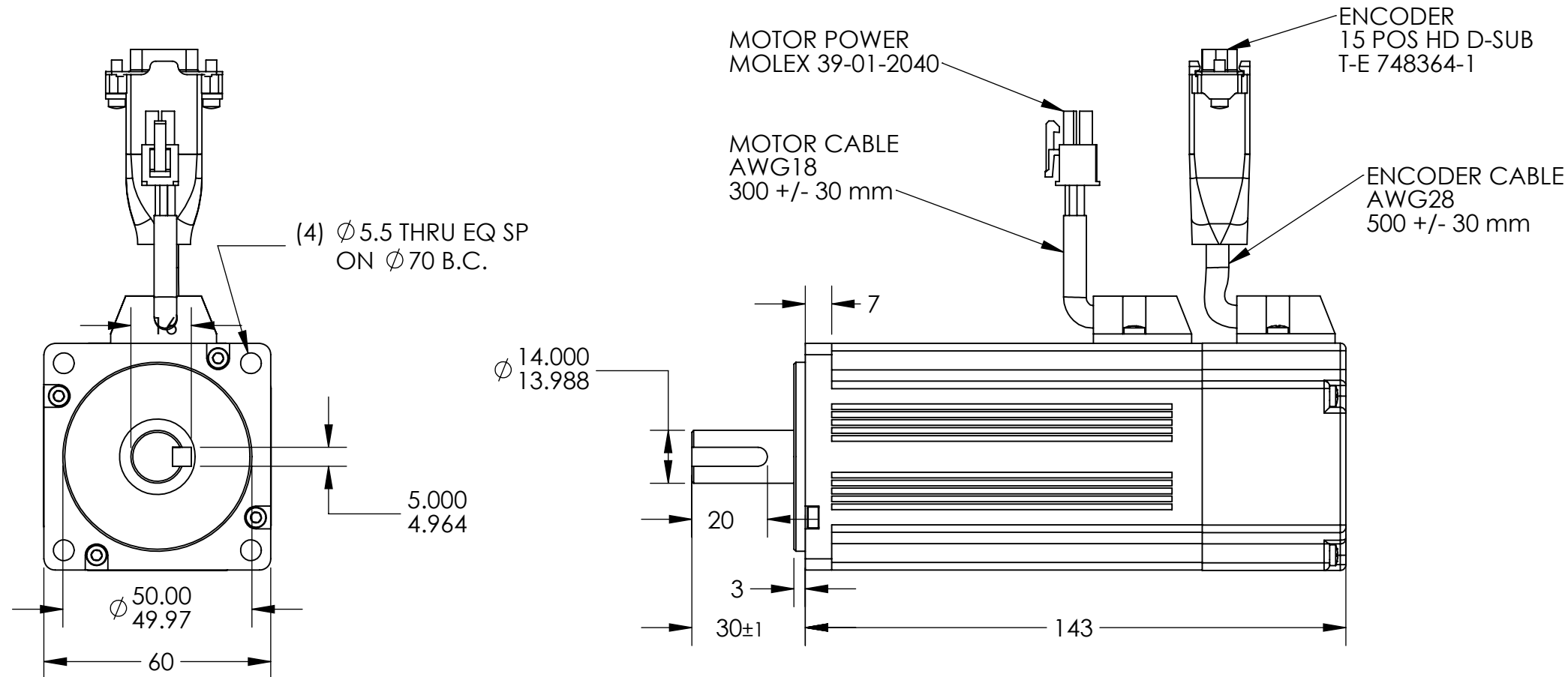
DRAWN	JPB	DATE	02/08/22	SIZE	B	PART NO.	EP23-XA-MX5000-CN-001	PART REV.	A
CHECKED	TPB	DATE	02/08/22	SCALE:	NONE	SHEET	1 OF 1	DWG. NO.	R

NOTES:

1. K_t AND K_e BASED ON PEAK SINUSOIDAL DRIVE
2. 8 POLE DESIGN
3. OPTION 1.5 N-m FAIL SAFE BRAKE, 24 VDC, ADD 70 MM TO LENGTH

PART REVISION HISTORY

REV.	DESCRIPTION	ECO	DWN	CHKD	DATE



ENCODER SPECIFICATIONS	
TYPE	OPTICAL
OUTPUT TYPE	LINE DRIVER
LINE COUNT	5000
GATED	A / B AT 90 DEGREE
INPUT VOLTAGE	5 VDC +/- 5%
CURRENT	55 mA TYPICAL

Motor leads		
Pin	Color	Function
1	Yellow	Phase U
2	Green	Phase V
3	Blue	Phase W
4	GRN/YEL	CASE

MOTOR PARAMETERS				
		MP60-3A	MP60-3B	MP60-3C
SUPPLY VOLTAGE	VDC	48	72	160
RATE SPEED	RPM	4000	4000	3000
RATED STALL TORQUE	N-m	1.3	1.3	1.3
POWER @ RATED SPEED	WATTS	400	400	400
PEAK TORQUE	N-m	4.1	4.1	3.9
CONTINUOUS CURRENT RMS	AMPS	12.7	7.6	3.4
PEAK CURRENT RMS	AMPS	24.5	22.8	10
VOLTAGE CONSTANT, K _e rms	V/KRPM	7.8	13	30
TORQUE CONSTANT, K _t rms	N-m/A	.0745	.124	0.38
RESISTANCE	OHM	.28	0.44	4.1
INDUCTANCE	mH	.33	0.48	4
MOMENT OF INERTIA	Kg-cm ²	0.29	0.29	0.29
INSULATION CLASS		F	F	F

FEEDBACK		
Pin	Color	Function
1	Red	5 vdc
2	Black	GND
3	Brown	Chl A
4	White	Chl A/
5	Blue	Chl B
6	Green	Chl B/
7	Orange	Index
8	Yellow	Index/
9		
10		
11	Violet	COMM A
12	WHT/BRN	COMM B
13	WHT/ORG	COMM C
14		
15	Shield	Shield

NOTICE ON REPRODUCTIONS
THIS DRAWING THE DESIGN AND THE PATENTS IT COVERS ARE THE PROPERTY OF CYMATIX, INC., OR THEIR CUSTOMERS. THEY WILL NOT BE REPRODUCED, COPIED, LOANED, EXHIBITED NOR USED EXCEPT IN THE LIMITED WAY AND THE PRIVATE USE PERMITTED BY THE CONSENT GIVEN BY THE LENDER TO THE BORROWER.

TOLERANCES UNLESS OTHERWISE SPECIFIED (U.O.S.)
 DECIMALS .XX = ± .01
 .XXX = ± .005
 .XXXX = ± .0005
 C'BREAKS .010/.020
 FILLETS 1/64
 .020 MAX
 FRAC. 1/64
 MACH. FIN. 125/
 ANGLES 1°

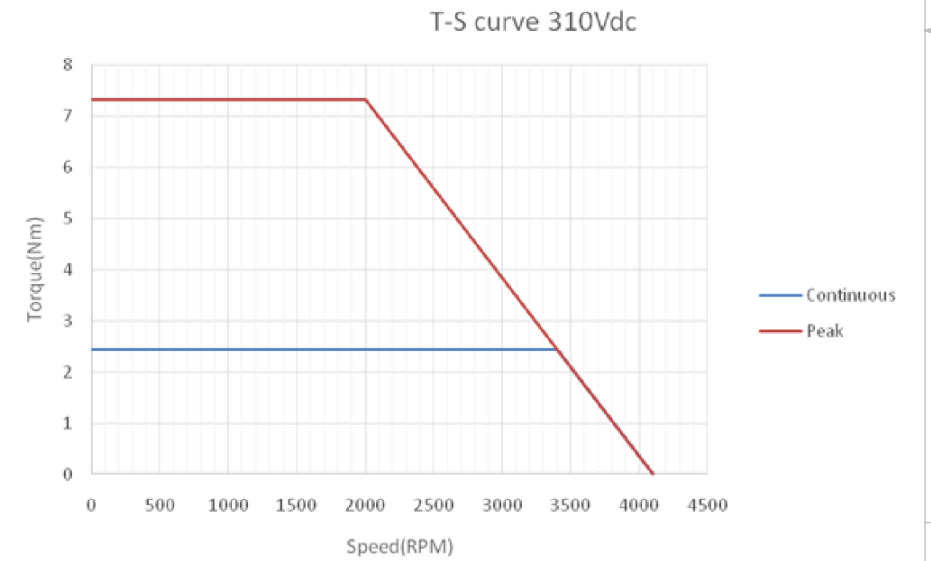
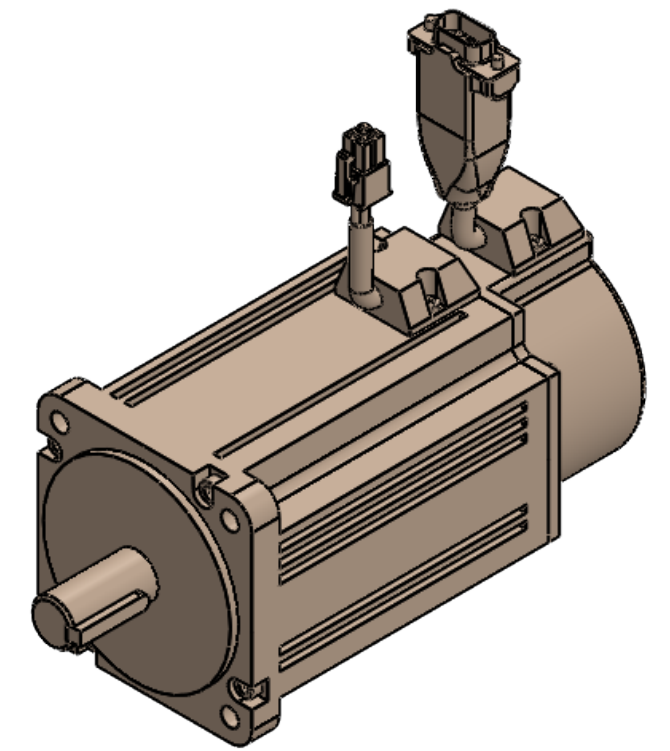
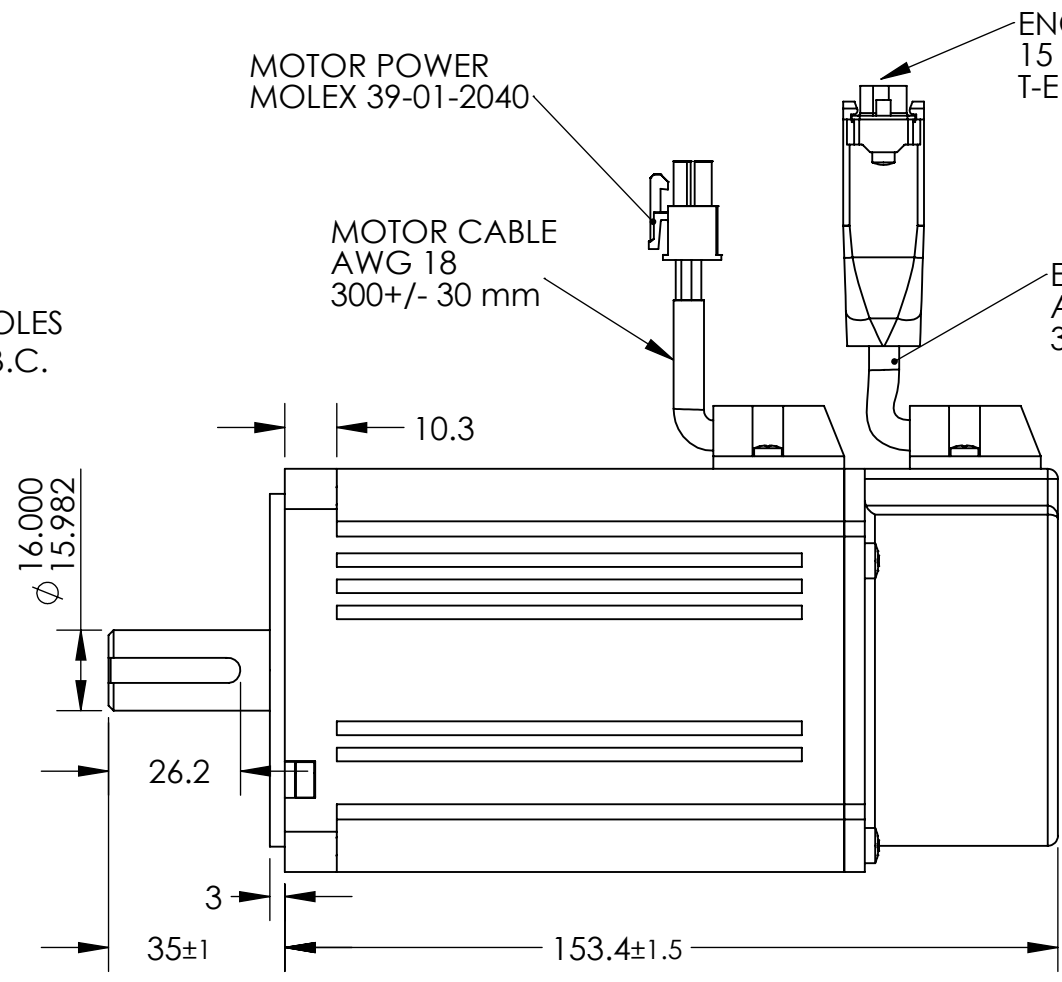
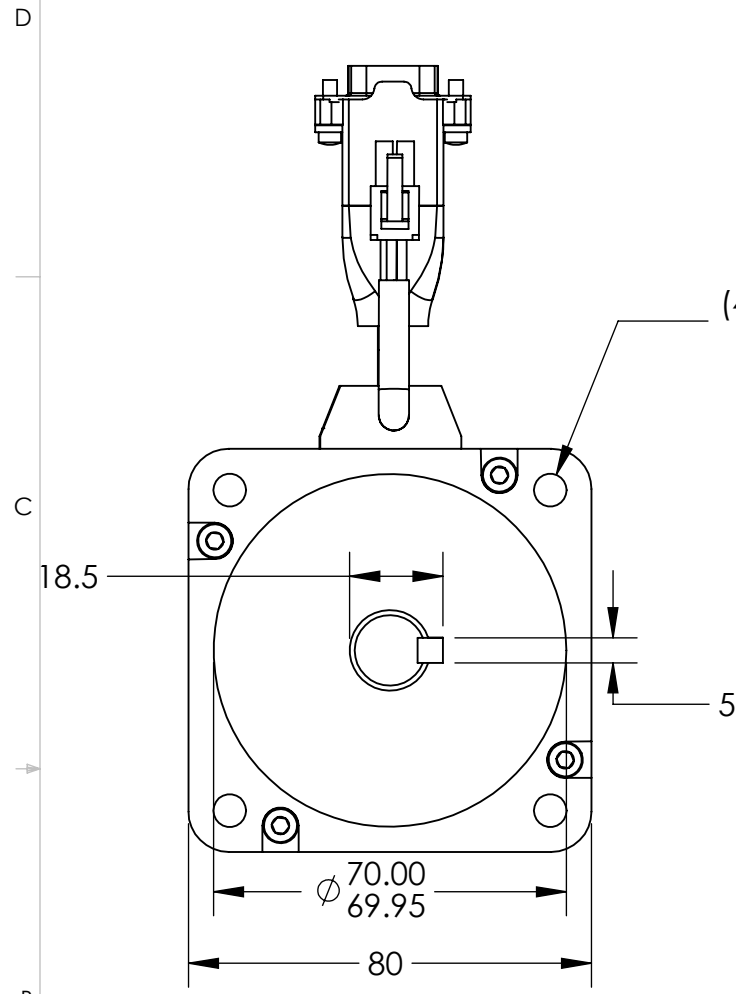


TITLE: BL MOTOR, 60 mm,
5000 ppr

DRAWN	JPB	DATE	06/30/22	SIZE	B	PART NO.	MP60-3x-MX5000-CN-001	PART REV.	A
CHECKED	TPB	DATE	06/30/22	SCALE:	NONE	SHEET	1 OF 1	DWG. NO.	R

- NOTES:
 1. K_t AND K_e BASED ON RMS SINUSOIDAL DRVE
 2. 8 POLE DESIGN

PART REVISION HISTORY					
REV.	DESCRIPTION	ECO	DWN	CHKD	DATE



MOTOR PARAMETERS		
		MP80-2B
MAX BUS VOLTAGE	VDC	310
RATE SPEED	RPM	3000
RATED TORQUE @ 3000 RPM	N-m	2.44
POWER @ RATED SPEED	WATTS	765
PEAK TORQUE	N-m	7.2
CONTINUOUS CURRENT 0-p	AMPS	3
PEAK CURRENT 0-p	AMPS	9
VOLTAGE CONSTANT, K_e rms	V/KRPM	43
TORQUE CONSTANT, K_t rms	N-m/A	0.411
RESISTANCE	OHM	2.4
INDUCTANCE	mH	6.5
MOMENT OF INERTIA	Kg-cm ²	1.45
INSULATION CLASS		F
WEIGHT	Kg	2.8

FEEDBACK		
Pin	Color	Function
1	Red	5 vdc
2	Black	GND
3	Blue	Chl A
4	BLU/BLK	Chl A/
5	Green	Chl B
6	GRN/BLK	Chl B/
7	Yellow	Index
8	YEL/BLK	Index/
9		
10	Brown	
11	White	COMM A
12	Gray	COMM B
13	WHT/ORG	COMM C
14		
15	Shield	Shield

ENCODER SPECIFICATIONS	
TYPE	OPTICAL
OUTPUT TYPE	LINE DRIVER
LINE COUNT	2500
GATED	A / B AT 90 DEDREE
INPUT VOLTAGE	5 VDC +/- 5%
CURRENT	55 mA TYPICAL

Motor leads		
Pin	Color	Function
1	Yellow	Phase U
2	Green	Phase V
3	Blue	Phase W
4	GRN/YEL	CASE

NOTICE ON REPRODUCTIONS
 THIS DRAWING THE DESIGN AND THE PATENTS IT COVERS ARE THE PROPERTY OF CYMATIX, INC., OR THEIR CUSTOMERS. THEY WILL NOT BE REPRODUCED, COPIED, LOANED, EXHIBITED NOR USED EXCEPT IN THE LIMITED WAY AND THE PRIVATE USE PERMITTED BY THE CONSENT GIVEN BY THE LENDER TO THE BORROWER.

TOLERANCES UNLESS OTHERWISE SPECIFIED (U.O.S.)			
DECIMALS	C'BREAKS	FRAC.	MACH. FIN.
.XX = ± .01	.010/.020	1/64	125 /
.XXX = ± .005	FILLETS	ANGLES	1°
.XXXX = ± .0005	.020 MAX		

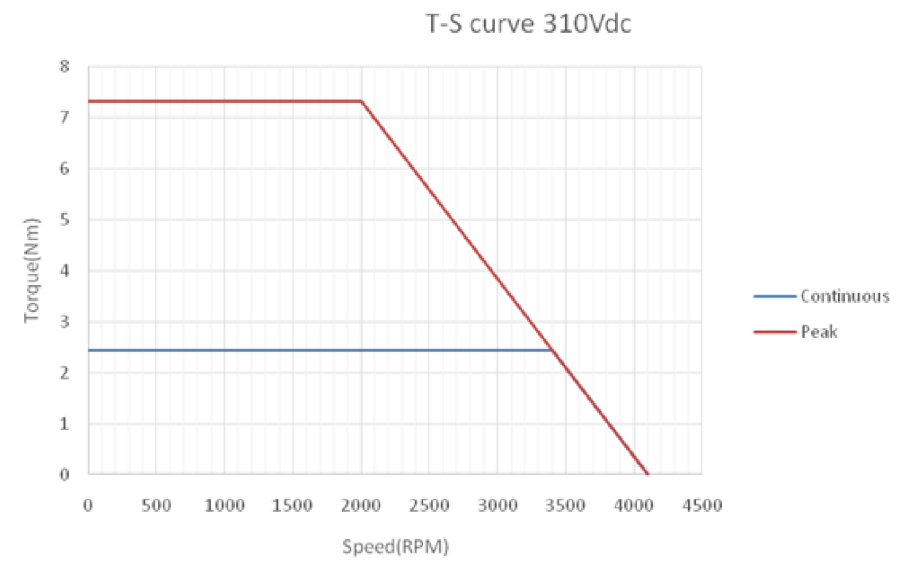
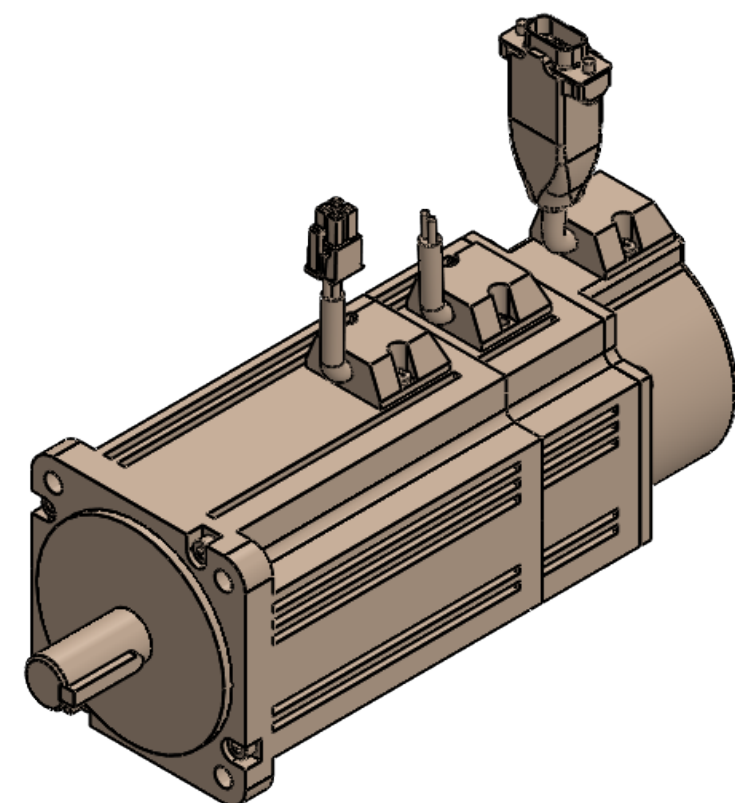
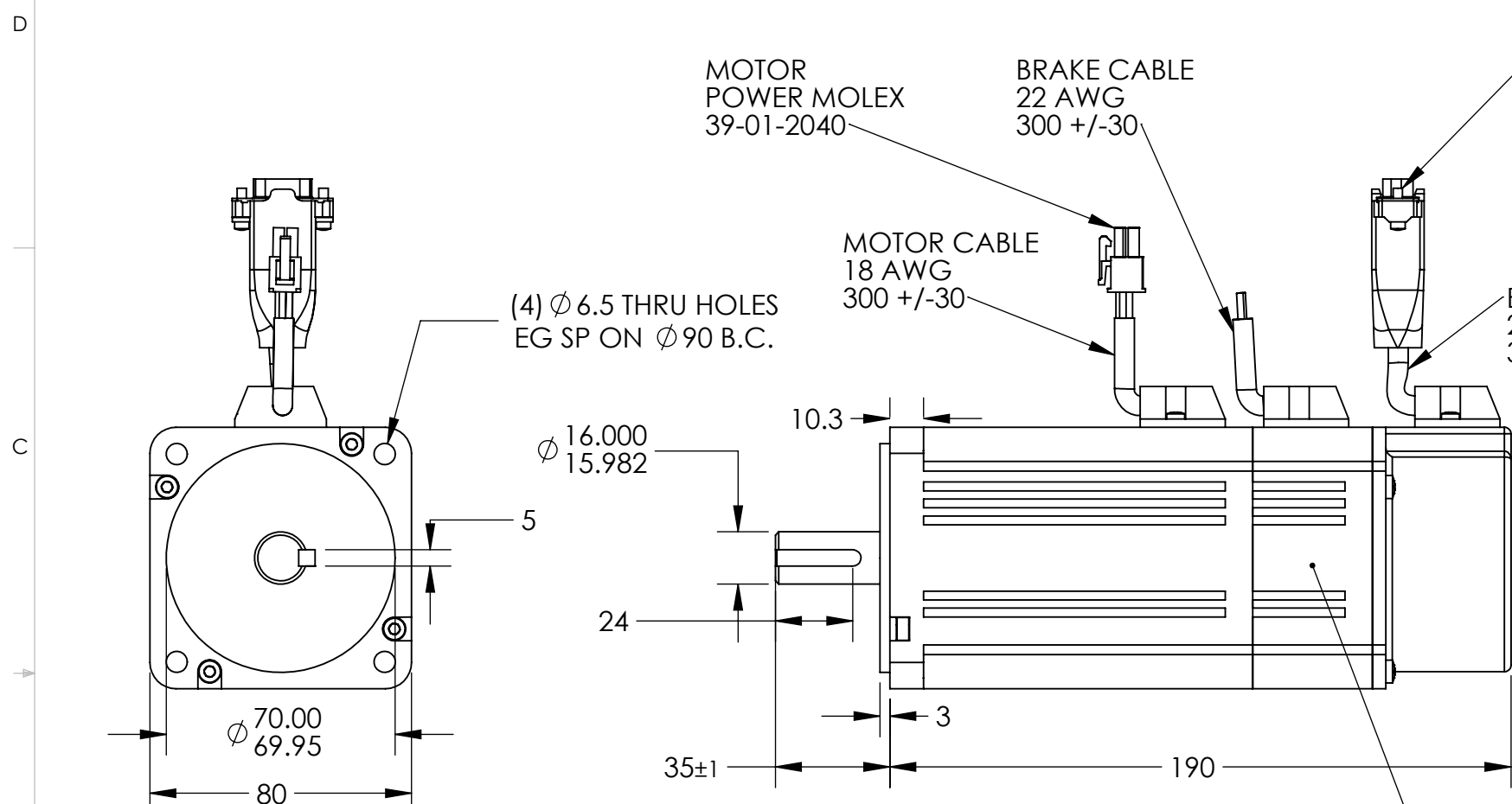


TITLE: BL MOTOR, 80 MM, 310 VDC
2500 PPR

DRAWN	JPB	DATE	02/10/22	SIZE	B	PART NO.	MP80-2B-MX2500-CN-001	PART REV.	A
CHECKED	TPB	DATE	02/10/22	SCALE:	NONE	SHEET 1 OF 1	DWG.NO.	R	

- NOTES:
 1. Kt AND Ke BASED ON RMS SINUSOIDAL DRVE
 2. 8 POLE DESIGN

PART REVISION HISTORY					
REV.	DESCRIPTION	ECO	DWN	CHKD	DATE



MOTOR PARAMETERS		
		MP80-2B
MAX BUS VOLTAGE	VDC	310
RATE SPEED	RPM	3000
RATED TORQUE @ 3000 RPM	N-m	2.44
POWER @ RATED SPEED	WATTS	765
PEAK TORQUE	N-m	7.2
CONTINUOUS CURRENT 0-p	AMPS	3
PEAK CURRENT 0-p	AMPS	9
VOLTAGE CONSTANT, Ke rms	V/KRPM	43
TORQUE CONSTANT, Kt rms	N-m/A	0.411
RESISTANCE	OHM	2.4
INDUCTANCE	mH	6.5
MOMENT OF INERTIA	Kg-cm2	1.45
INSULATION CLASS		F
WEIGHT	Kg	2.8

FEEDBACK		
Pin	Color	Function
1	Red	5 vdc
2	Black	GND
3	Blue	Chl A
4	BLU/BLK	Chl A/
5	Green	Chl B
6	GRN/BLK	Chl B/
7	Yellow	Index
8	YEL/BLK	Index/
9		
10	Brown	
11	White	COMM A
12	Gray	COMM B
13	WHT/ORG	COMM C
14		
15	Shield	Shield

ENCODER SPECIFICATIONS	
TYPE	OPTICAL
OUTPUT TYPE	LINE DRIVER
LINE COUNT	2500
GATED	A / B AT 90 DEDREE
INPUT VOLTAGE	5 VDC +/- 5%
CURRENT	55 mA TYPICAL

Motor leads		
Pin	Color	Function
1	Yellow	Phase U
2	Green	Phase V
3	Blue	Phase W
4	YEL/GRN	CASE

NOTICE ON REPRODUCTIONS
 THIS DRAWING THE DESIGN AND THE PATENTS IT COVERS ARE THE PROPERTY OF CYMATIX, INC., OR THEIR CUSTOMERS. THEY WILL NOT BE REPRODUCED, COPIED, LOANED, EXHIBITED NOR USED EXCEPT IN THE LIMITED WAY AND THE PRIVATE USE PERMITTED BY THE CONSENT GIVEN BY THE LENDER TO THE BORROWER.

TOLERANCES UNLESS OTHERWISE SPECIFIED (U.O.S.)			
DECIMALS	C'BREAKS	FRAC.	MACH. FIN.
.XX ± .01	.010/.020	1/64	125
.XXX ± .005	FILLETS	ANGLES	
.XXXX ± .0005	.020 MAX	1°	

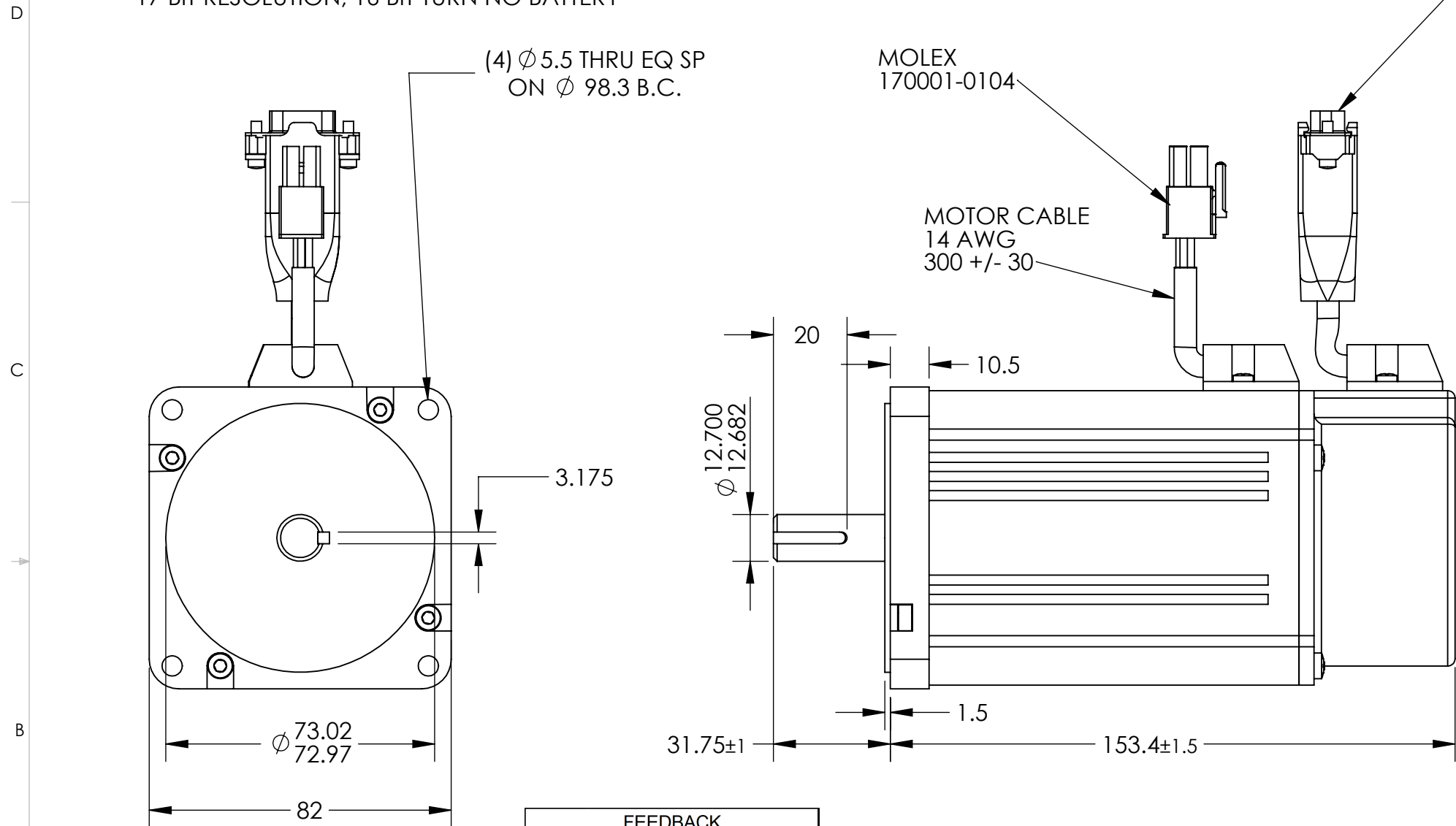


TITLE: BL MOTOR/BRAKE, 80 MM, 310 VDC
 2500 PPR ENCODER

DRAWN	JPB	DATE	02/10/22	SIZE	B	PART NO.	MP80-2B-MX2500-CB-001	PART REV.	A
CHECKED	TPB	DATE	02/10/22	SCALE:	NONE	SHEET 1 OF 1	DWG.NO.	R	

- NOTES:
1. K_t AND K_e BASED ON RMS SINE WAVE DRIVE
 2. 8 POLE DESIGN
 3. OPTION 1.7 N-m FAIL SAFE BRAKE
 4. OPTIONAL MULTI-TURN ABSOLUTE BISS-C
17 BIT RESOLUTION, 16 BIT TURN NO BATTERY

PART REVISION HISTORY					
REV.	DESCRIPTION	ECO	DWN	CHKD	DATE

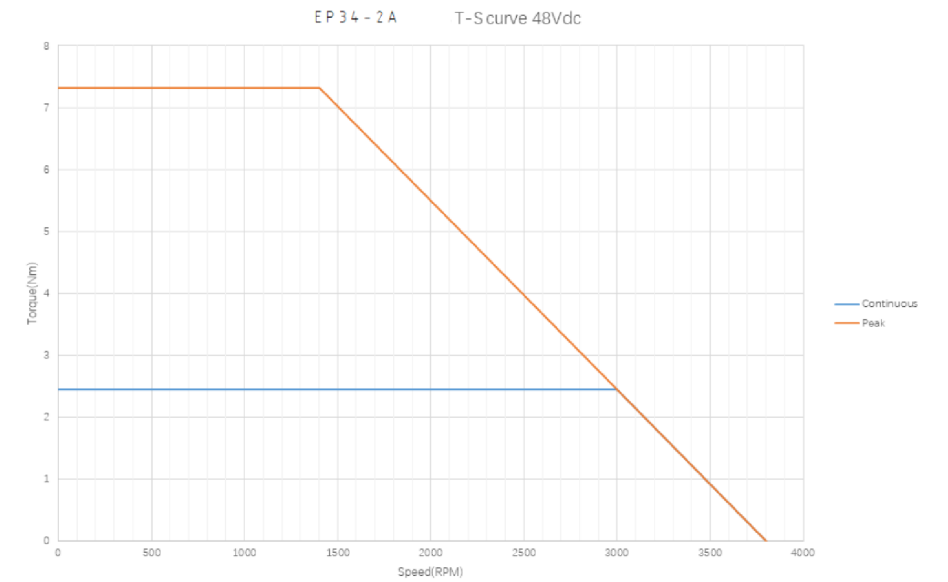


FEEDBACK
15 POS MALE
D-SUB HD
T-E 748364-1

MOLEX
170001-0104

MOTOR CABLE
14 AWG
300 +/- 30

(4) ϕ 5.5 THRU EQ SP
ON ϕ 98.3 B.C.



MOTOR PARAMETERS		
Parameter	Unit	Value
BUS VOLTAGE	VDC	48
RATE SPEED	RPM	3000
RATED TORQUE @ 3000 RPM	N-m	2.44
POWER @ RATED SPEED	WATTS	765
PEAK TORQUE	N-m	7.2
CONTINUOUS CURRENT 0-p	AMPS	21
PEAK CURRENT 0-p	AMPS	63
VOLTAGE CONSTANT, K_e rms	V/KRPM	8.5
TORQUE CONSTANT, K_t rms	N-m/A	0.116
RESISTANCE	OHM	0.12
INDUCTANCE	mH	0.27
MOMENT OF INERTIA	Kg-cm ²	1.45
INSULATION CLASS		F
WEIGHT	Kg	2.8

FEEDBACK		
Pin	Color	Function
1	Red	5 vdc
2	Black	GND
3	Brown	Chl A
4	White	Chl A/
5	Blue	Chl B
6	Green	Chl B/
7	Orange	Index
8	Yellow	Index/
9		
10		
11	Violet	COMM A
12	WHT/BRN	COMM B
13	WHT/ORG	COMM C
14		
15	Shield	Shield

Motor leads		
MOLEX 170001-0104		
Pin	Color	Function
1	Yellow	Phase U
2	Green	Phase V
3	Blue	Phase W
4		

ENCODER SPECIFICATIONS	
TYPE	OPTICAL
OUTPUT TYPE	LINE DRIVER
LINE COUNT	2500
GATED	A / B AT 90 DEGREE
INPUT VOLTAGE	5 VDC +/- 5%
CURRENT	55 mA TYPICAL

NOTICE ON REPRODUCTIONS
THIS DRAWING THE DESIGN AND THE PATENTS IT COVERS ARE THE PROPERTY OF CYMATIX, INC., OR THEIR CUSTOMERS. THEY WILL NOT BE REPRODUCED, COPIED, LOANED, EXHIBITED NOR USED EXCEPT IN THE LIMITED WAY AND THE PRIVATE USE PERMITTED BY THE CONSENT GIVEN BY THE LENDER TO THE BORROWER.

TOLERANCES UNLESS OTHERWISE SPECIFIED (U.O.S.)			
DECIMALS	C'BREAKS	FRAC.	MACH. FIN.
.XX = ± .01	.010/.020	1/64	125
.XXX = ± .005	FILLETS	ANGLES	
.XXXX = ± .0005	.020 MAX	1°	



MATERIAL	
FINISH	
DRAWN	JPB
CHECKED	TPB
DATE	10/21/21

TITLE:	BL MOTOR, NEMA 34, 48 VDC, 2500 PPR
PART NO.	EP34-2A-MX2500-CN-001
SCALE:	NONE
SHEET	1 OF 1
DWG. NO.	R

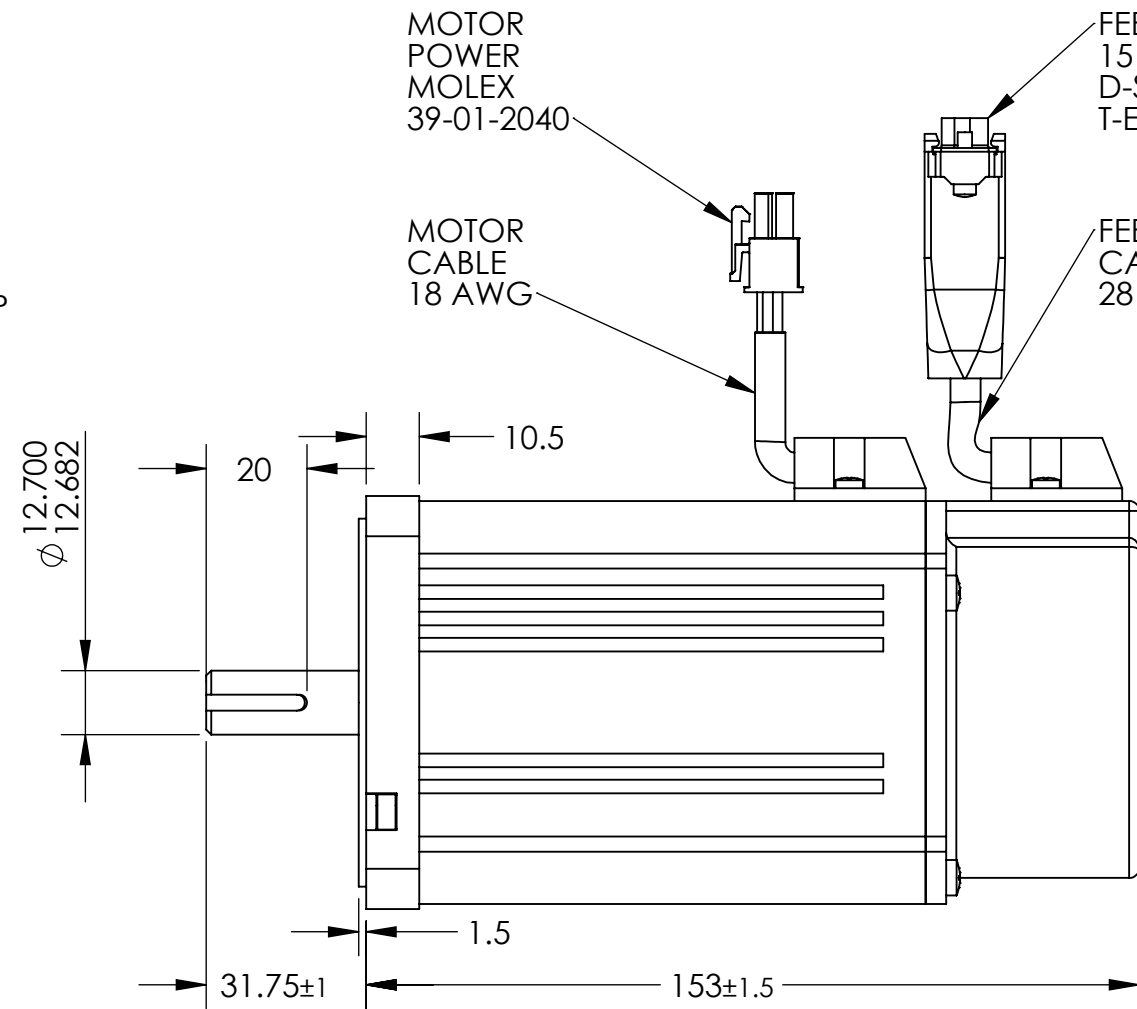
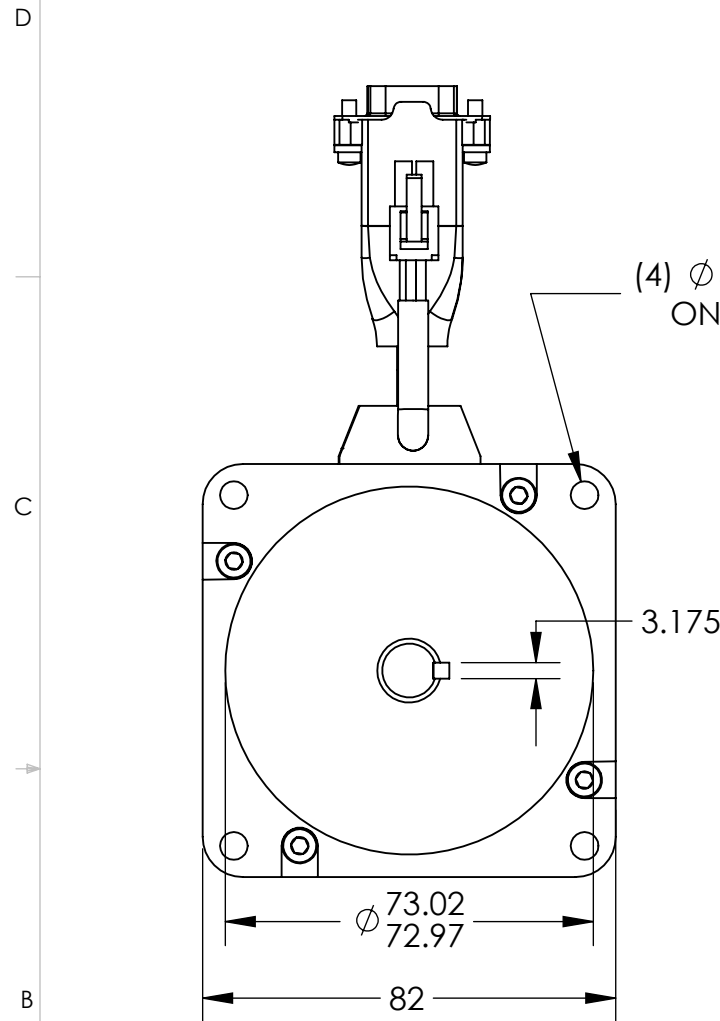


SIZE	B
PART REV.	B

- NOTES:
1. Kt AND Ke BASED ON RM SINE WAVE DRIVE
 2. 8 POLE DESIGN
 3. OPTIONAL 1.7 N-m FAIL SAFE BRAKE 24 vdc
ADD 231 MM LENGTH

PART REVISION HISTORY

REV.	DESCRIPTION	ECO	DWN	CHKD	DATE

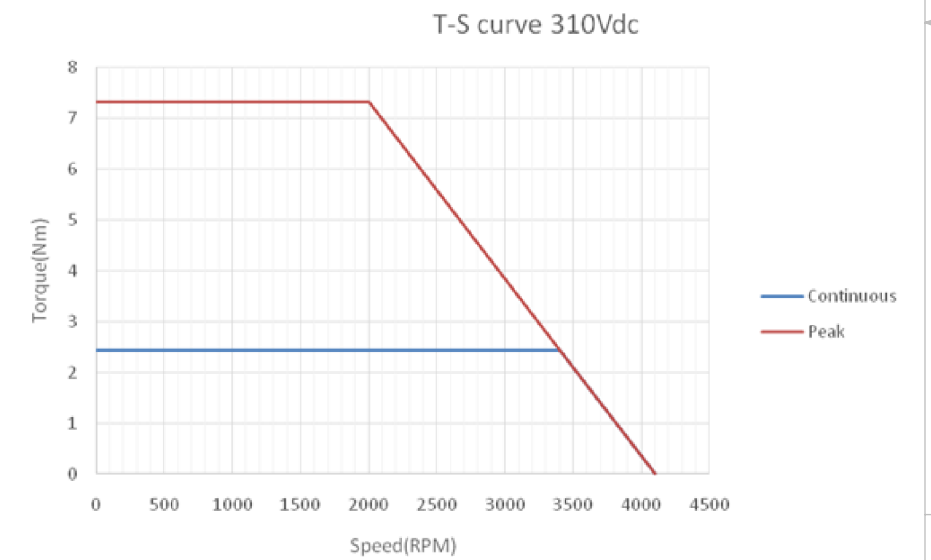
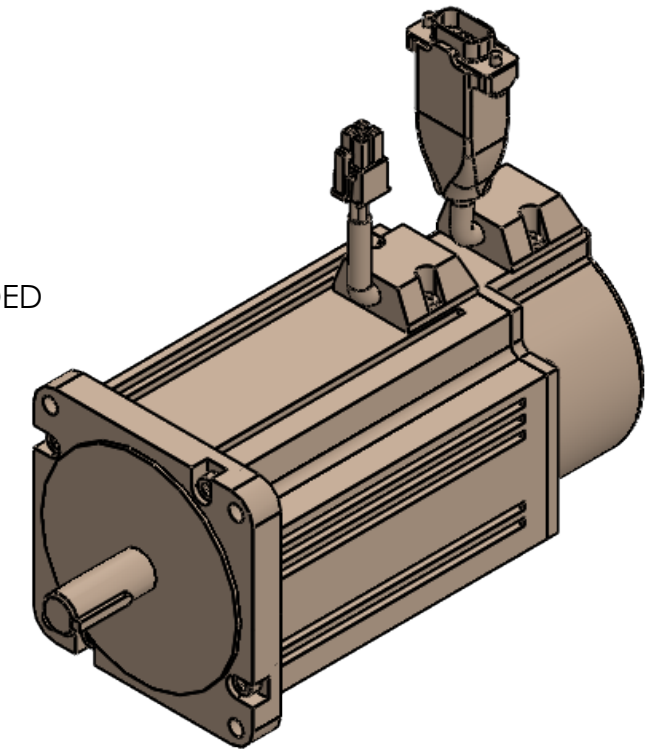


MOTOR POWER MOLEX 39-01-2040

MOTOR CABLE 18 AWG

FEEDBACK 15 POS MALE D-SUB HD T-E 748364-1

FEEDBACK CABLE SHIELDED 28 AWG



MOTOR PARAMETERS		
BUS VOLTAGE	VDC	310
RATE SPEED	RPM	3000
RATED TORQUE @ 3000 RPM	N-m	2.44
POWER @ RATED SPEED	WATTS	765
PEAK TORQUE	N-m	7.2
CONTINUOUS CURRENT 0-p	AMPS	3
PEAK CURRENT 0-p	AMPS	9
VOLTAGE CONSTANT, Ke rms	V/KRPM	43
TORQUE CONSTANT, Kt rms	N-m/A	0.411
RESISTANCE	OHM	2.4
INDUCTANCE	mH	6.5
MOMENT OF INERTIA	Kg-cm2	1.45
INSULATION CLASS		F
WEIGHT	Kg	2.8

FEEDBACK		
Pin	Color	Function
1	Red	5 vdc
2	Black	GND
3	Blue	Chl A
4	BLU/BLK	Chl A/
5	Green	Chl B
6	GRN/BLK	Chl B/
7	Yellow	Index
8	YEL/BLK	Index/
9		
10		
11	Brown	COMM A
12	White	COMM B
13	Gray	COMM C
14		
15	Shield	Shield

Motor leads		
Molex 39-01-2040		
Pin	Color	Function
1	Yellow	Phase U
2	Green	Phase V
3	Blue	Phase W
4	YEL/GRN	CASE

ENCODER SPECIFICATIONS	
TYPE	OPTICAL
OUTPUT TYPE	LINE DRIVER
LINE COUNT	2500
GATED	A / B AT 90 DEDREE
INPUT VOLTAGE	5 VDC +/- 5%
CURRENT	55 mA TYPICAL

NOTICE ON REPRODUCTIONS
THIS DRAWING THE DESIGN AND THE PATENTS IT COVERS ARE THE PROPERTY OF CYMATIX, INC., OR THEIR CUSTOMERS. THEY WILL NOT BE REPRODUCED, COPIED, LOANED, EXHIBITED NOR USED EXCEPT IN THE LIMITED WAY AND THE PRIVATE USE PERMITTED BY THE CONSENT GIVEN BY THE LENDER TO THE BORROWER.

TOLERANCES UNLESS OTHERWISE SPECIFIED (U.O.S.)

DECIMALS	C'BREAKS	FRAC.	MACH. FIN.
.XX = ± .01	.010/.020	1/64	125 /
.XXX = ± .005	FILLETS	ANGLES	
.XXXX = ± .0005	.020 MAX	1°	

MATERIAL	
FINISH	
DRAWN	JPB
DATE	10/13/21
CHECKED	TPB
DATE	10/13/21

CYMATIX INC.

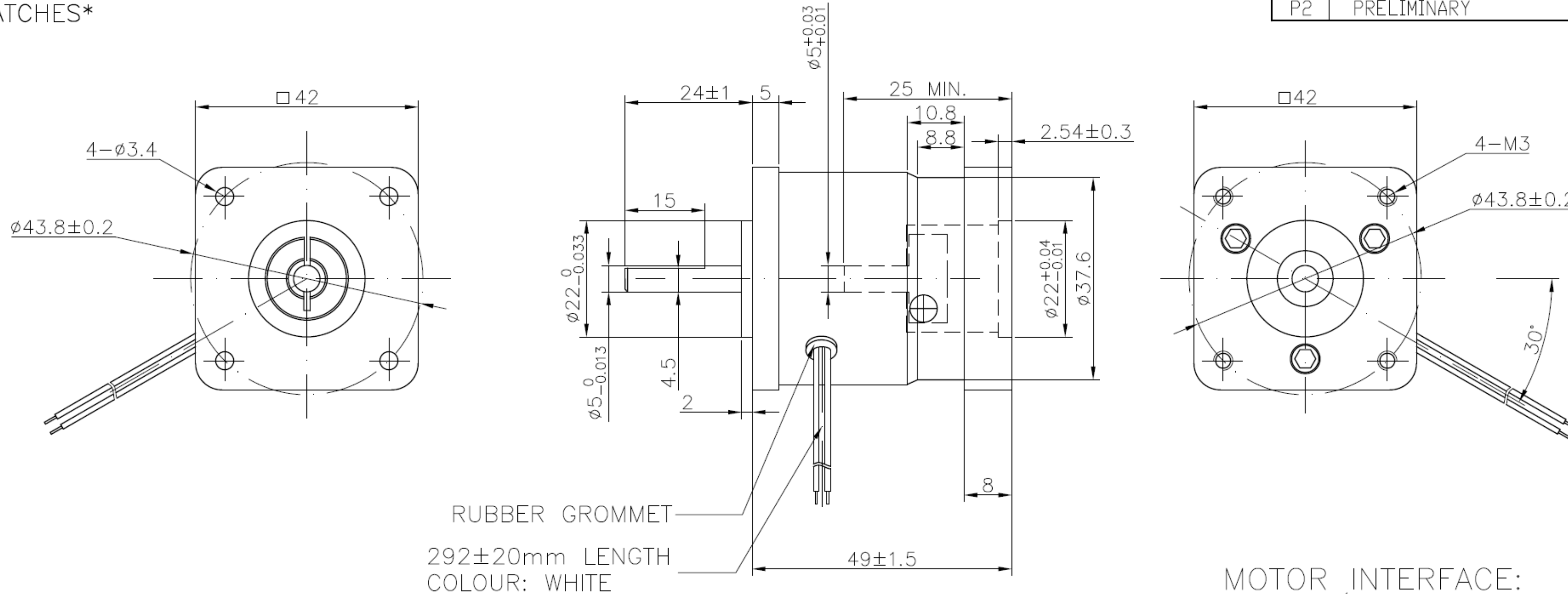
TITLE: BL MOTOR, NEMA 34, 310 VDC
2500 PPR

PART NO. EP34-2B-BX2500-CN-001

SCALE: NONE SHEET 1 OF 1 DWG.NO. R

NOTES:
 1.SURFACE QUALITY: NOT ALLOW DENTS AND SCRATCHES*

REV	DESCRIPTION	DATE	APPROVE
P1	PRELIMINARY	16/06/06	XM
P2	PRELIMINARY	16/06/14	XM

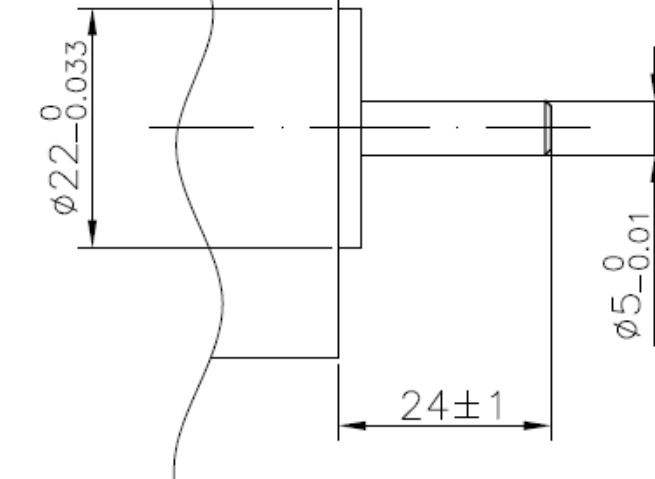
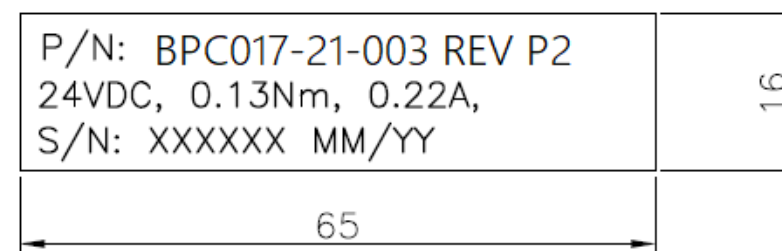


RUBBER GROMMET
 292±20mm LENGTH
 COLOUR: WHITE

MOTOR INTERFACE:

SPECIFICATION:

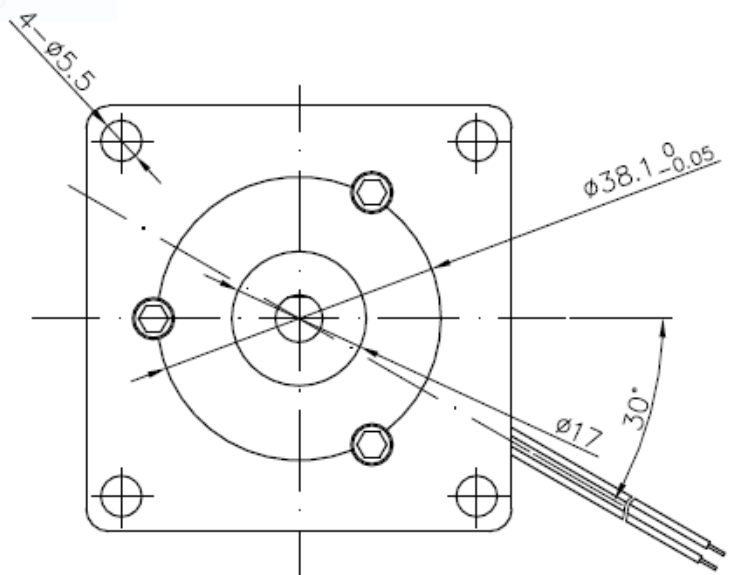
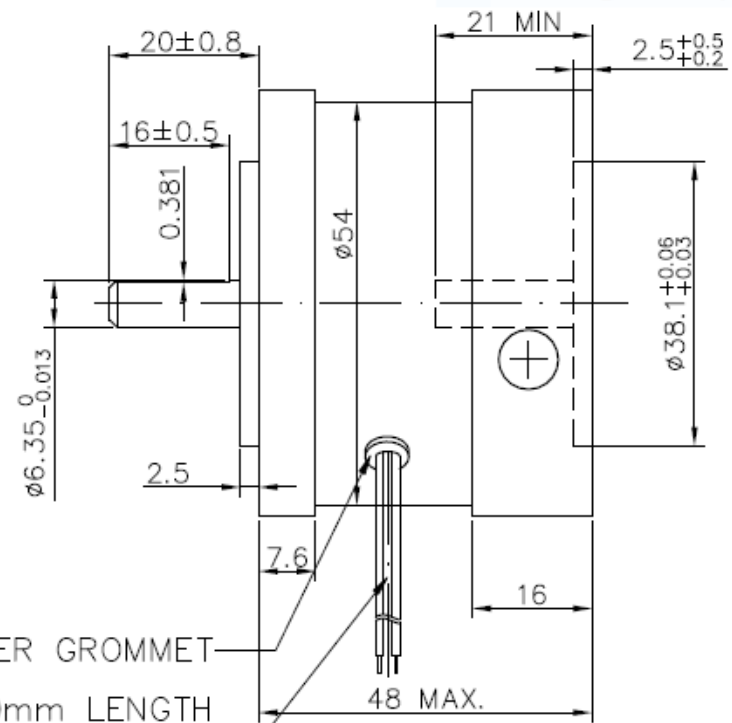
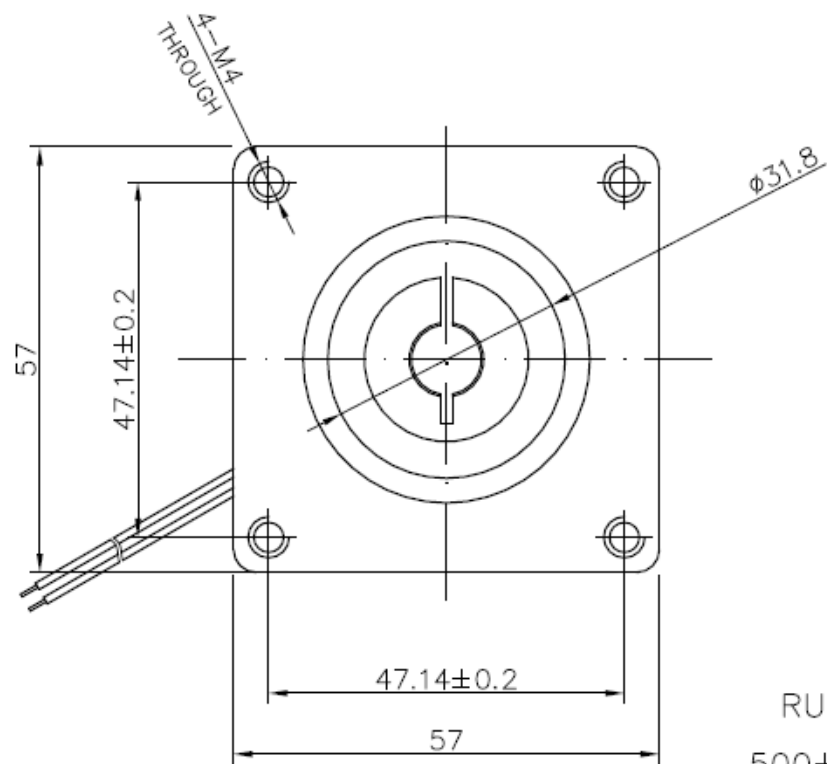
1. VOLTAGE:24VDC
2. STATIC TORQUE:0.113Nm
3. RATED CURRENT:0.22A
4. POWER:5.28W
5. RESISTENCE:100 Ohms
6. START VOLTAGE:15VDC MAX.
7. HI-POT: 500VAC/1S, 2mA
8. POWER OFF BRAKE



NOTE: THIS DRAWING HAS BEEN CREATED BY AUTOCAD. MANUAL REVISIONS ARE NOT ALLOWED.

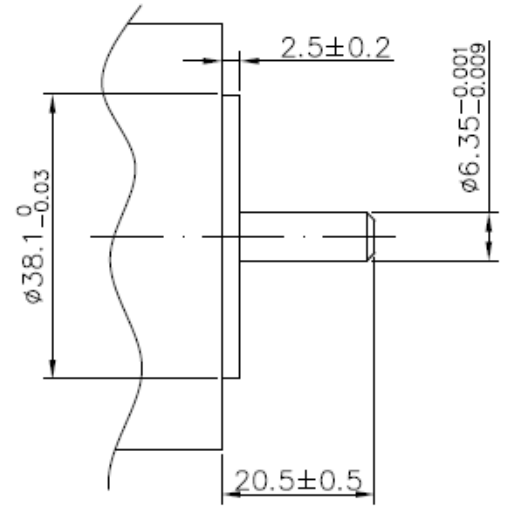
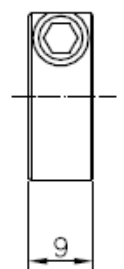
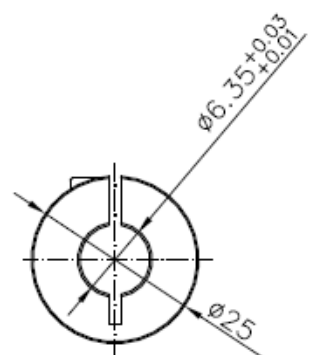
MATERIAL		TOLERANCE UNLESS OTHERWISE SPECIFIED ISO 2768-1 MEDIUM			
DRAWN XXX	CHECKED	APPROVED - DATE	FILENAME	DATE xx/xx/xx	SCALE N/A
CYMATIX			BRAKE		
			BPC017-21-003 REV P2		

REV	DESCRIPTION	DATE	APPROVE
P1	PRELIMINARY	22/06/13	ZZF



RUBBER GROMMET
500±20mm LENGTH
COLOUR: WHITE

MOTOR INTERFACE:



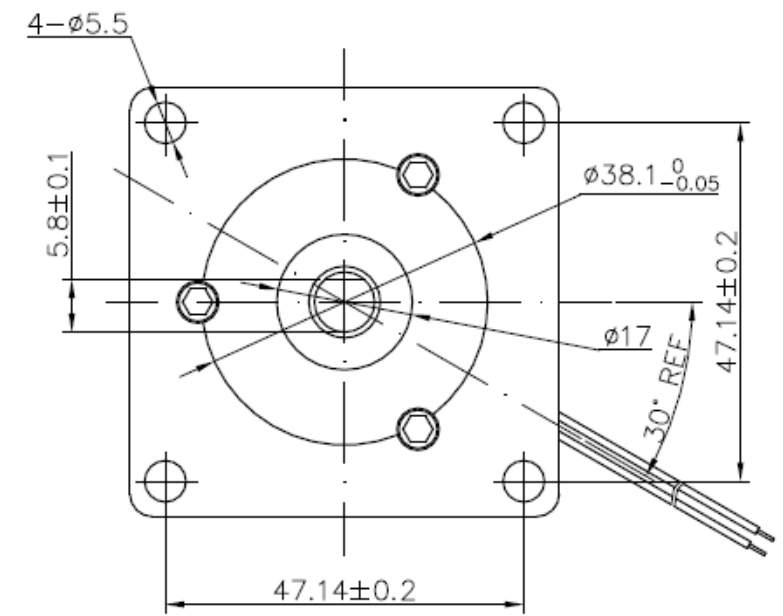
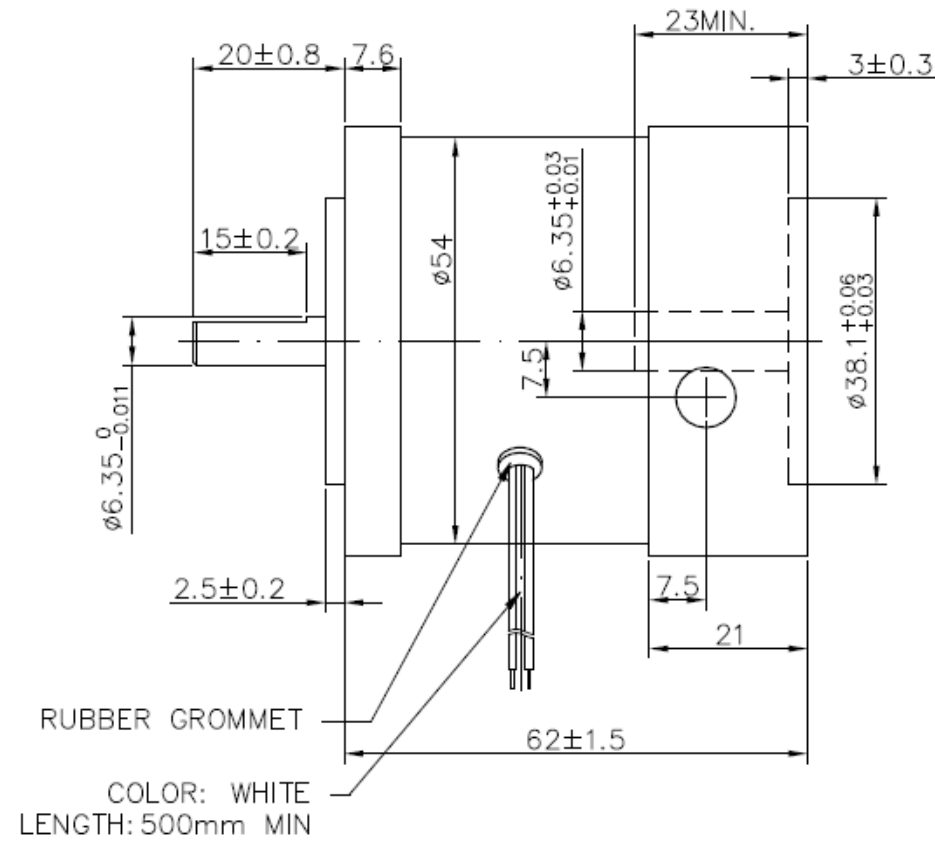
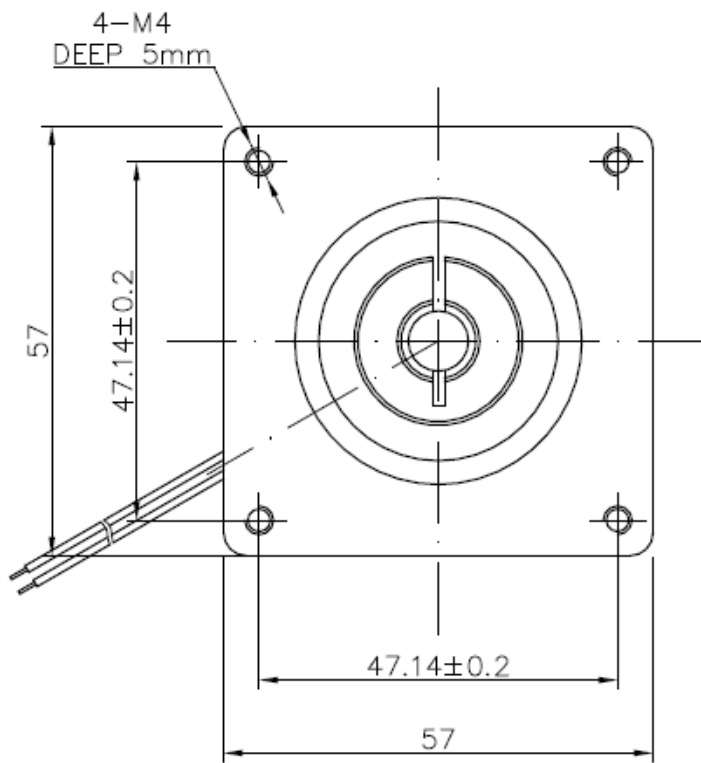
NOTE :

- 1, VOLTAGE : 24VDC
- 2, STATIC TORQUE : 0.5Nm Min.
- 3, RATED CURRENT : 0.27A
- 4, POWER : 6.5W
- 5, RESISTENCE : 93 Ohms
- 6, START VOLTAGE : 18VDCMAX.
7. HI-POT: 500VAC/1S, 2mA
8. POWER OFF BRAKE
9. OFFER AN FIXED SCREW M4 WITH THE BRAKE

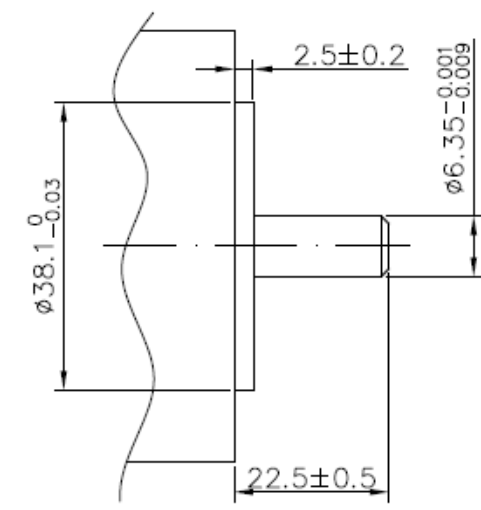
NOTE: THIS DRAWING HAS BEEN CREATED BY AUTOCADMANUAL REVISIONS ARE NOT ALLOWED.

MATERIAL		TOLERANCE UNLESS OTHERWISE SPECIFIED ISO 2768-1 MEDIUM			
DRAWN ZQY	CHECKED	APPROVED - DATE	FILENAME	DATE xx/xx/xx	SCALE N/A
CYMATIX		BRAKE			SHEET 1/1
					BMC023-24-027

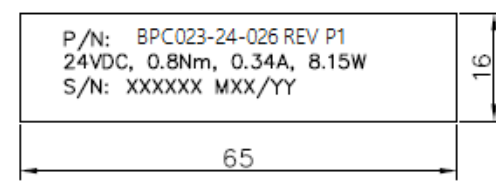
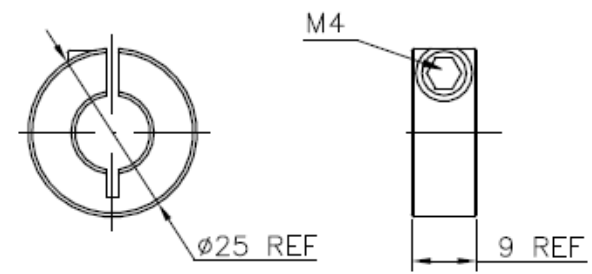
REV	DESCRIPTION	DATE	APPROVE
P1	PRELIMINARY	22/02/09	ZZF



MOTOR INTERFACE:



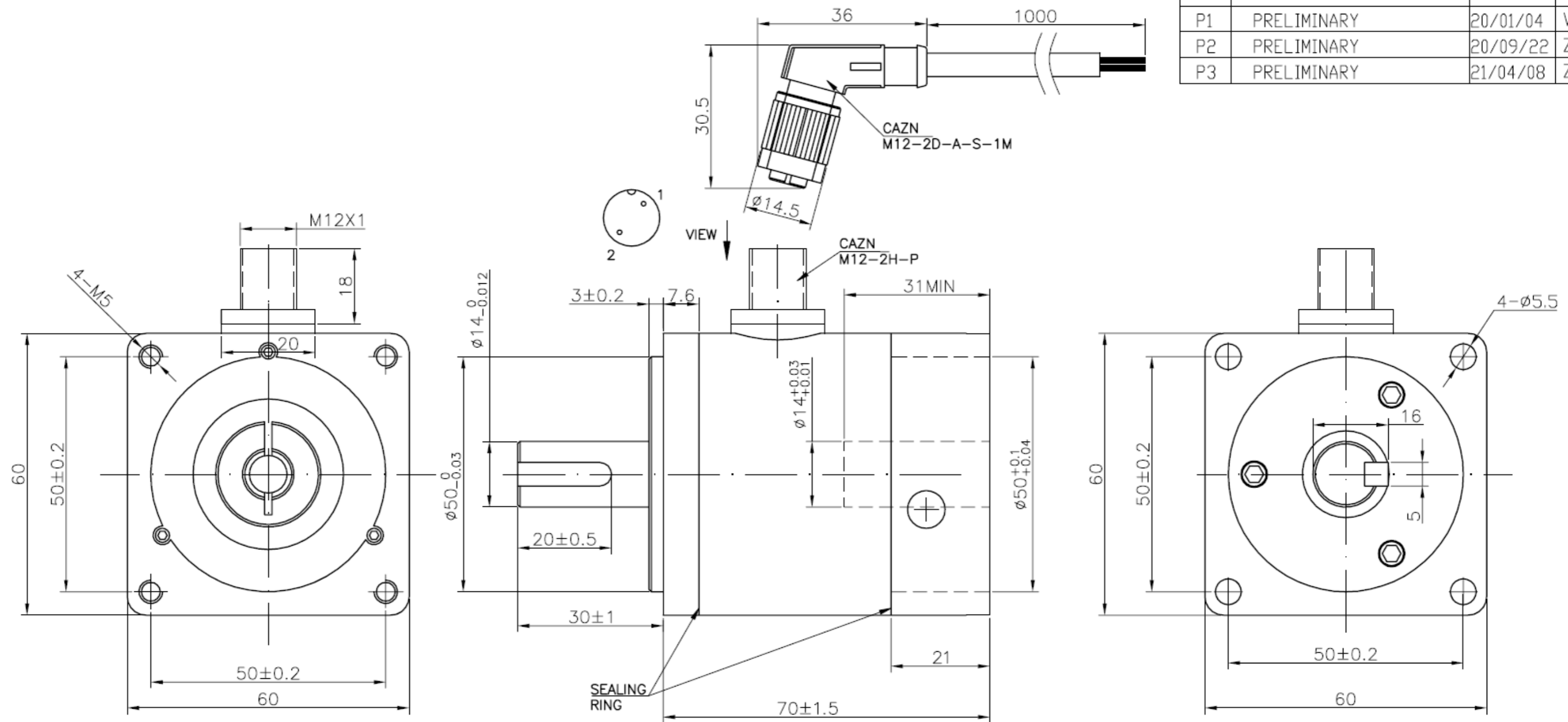
- NOTE:
- VOLTAGE: 24VDC
 - STATIC TORQUE: 0.8Nm Min.
 - RATED CURRENT: 0.34A
 - POWER: 8.1W
 - RESISTANCE: 74 Ohms
 - START VOLTAGE: 20VDC MAX.
 - HI-POT: 500VAC/1S, 2mA
 - MOMENT OF INERTIA: 27.7 g.cm²
 - POWER OFF BRAKE



NOTE: THIS DRAWING HAS BEEN CREATED BY AUTOCADMANUAL REVISIONS ARE NOT ALLOWED.

MATERIAL		TOLERANCE UNLESS OTHERWISE SPECIFIED ISO 2768-1 MEDIUM			
DRAWN XXX	CHECKED	APPROVED - DATE	FILENAME	DATE xx/xx/xx	SCALE N/A
CYMATIX		BRAKE			SHEET 1/1
		BPC-023-24-026			

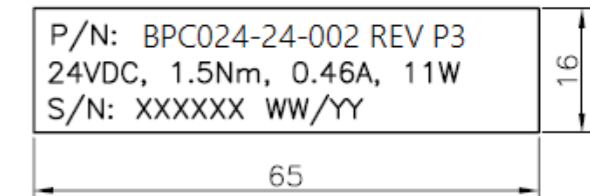
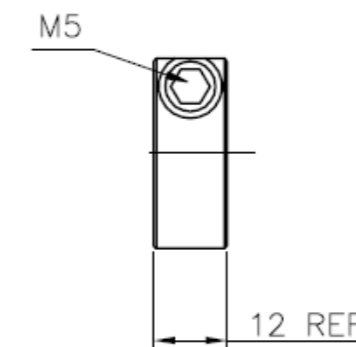
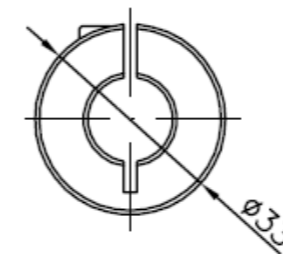
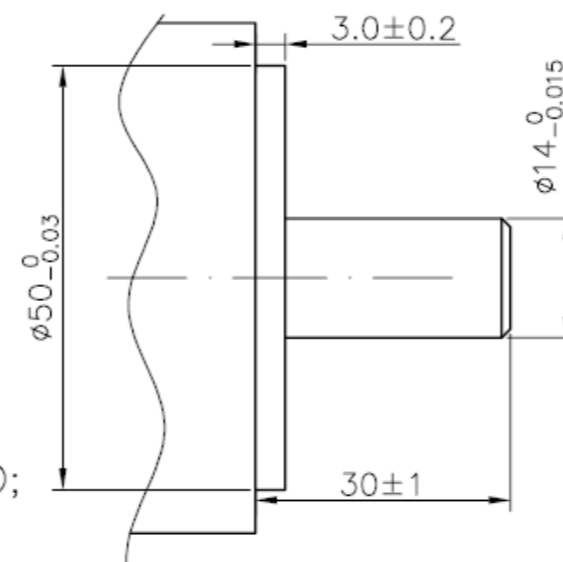
REV	DESCRIPTION	DATE	APPROVE
P1	PRELIMINARY	20/01/04	WDP
P2	PRELIMINARY	20/09/22	ZZF
P3	PRELIMINARY	21/04/08	ZZF



NOTE:

1. VOLTAGE: 24VDC
 2. STATIC TORQUE: 1.5Nm Min.
 3. RATED CURRENT: 0.46A
 4. POWER: 11W
 5. RESISTANCE: 52 Ohms
 6. START VOLTAGE: 22VDC MAX.
 7. HI-POT: 500VAC/1S, 2mA
 8. PERMANENT MAGNET BRAKE
- BROWN CONNECT +, THE BRAKE IS RELEASED;
 BROWN CONNECT -, THE BRAKE IS LOCKED.

MOTOR INTERFACE:



NOTE: THIS DRAWING HAS BEEN CREATED BY AUTOCAD. MANUAL REVISIONS ARE NOT ALLOWED.

MATERIAL		TOLERANCE UNLESS OTHERWISE SPECIFIED ISO 2768-1 MEDIUM			
DRAWN XXX	CHECKED	APPROVED - DATE	FILENAME	DATE xx/xx/xx	SCALE N/A
CYMATIX		BRAKE			SHEET 1/1
		BPC024-24-002			

