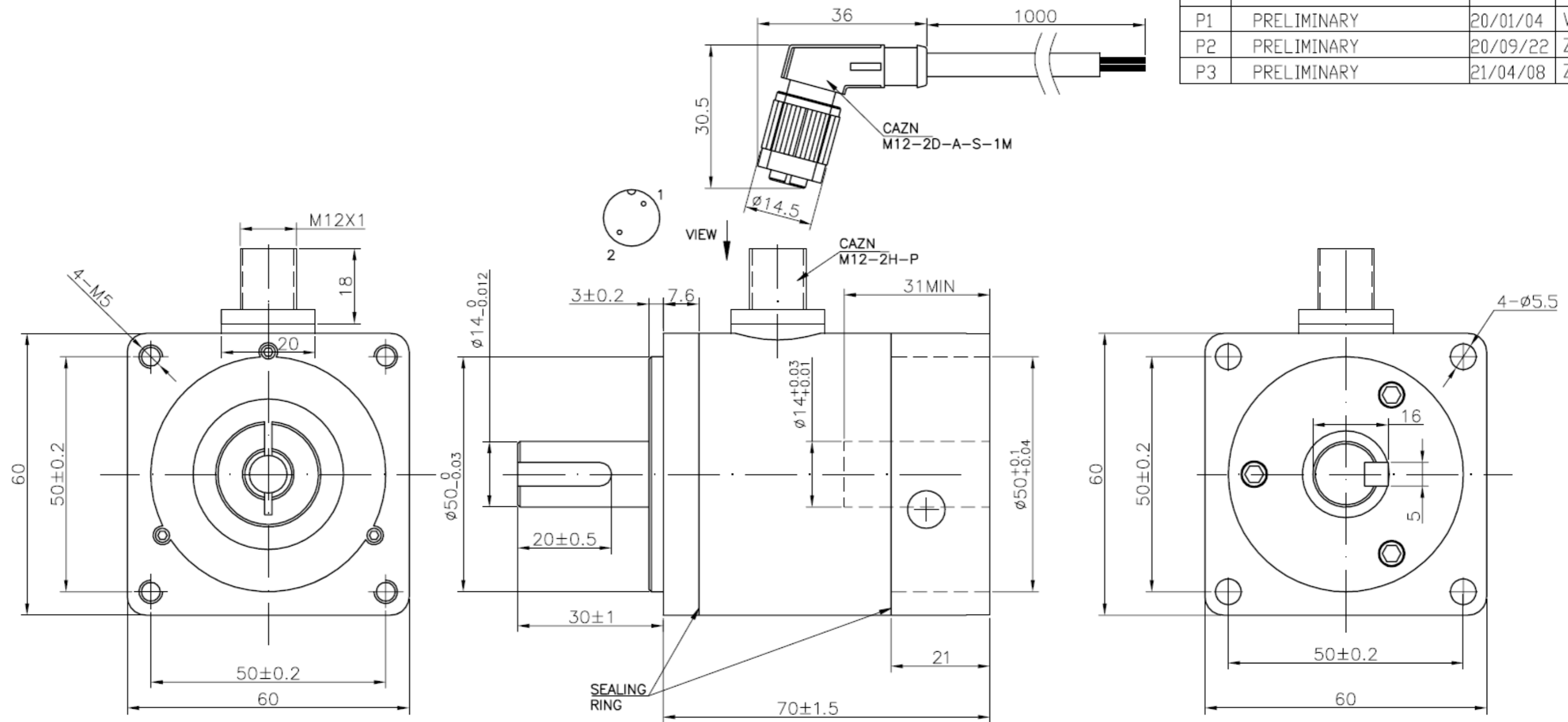


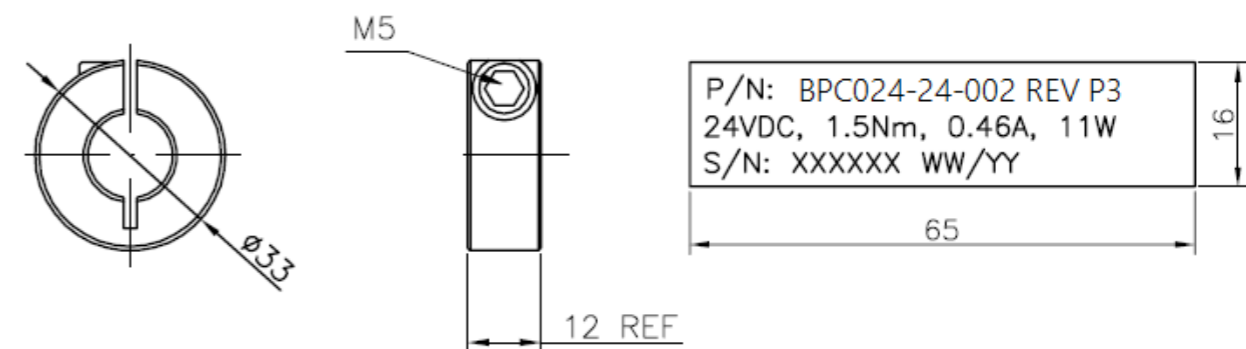
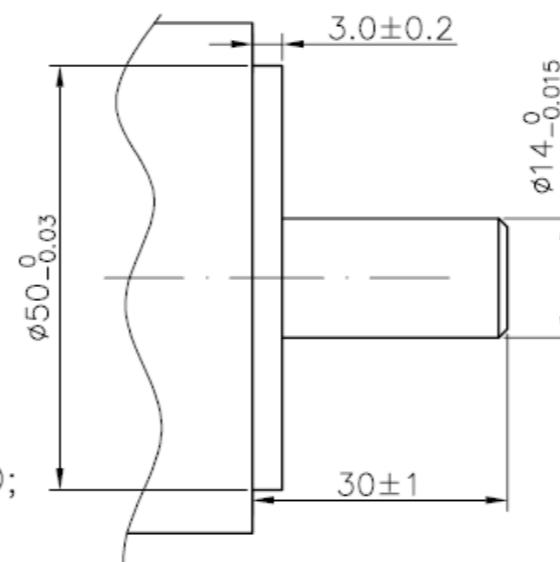
REV	DESCRIPTION	DATE	APPROVE
P1	PRELIMINARY	20/01/04	WDP
P2	PRELIMINARY	20/09/22	ZZF
P3	PRELIMINARY	21/04/08	ZZF



NOTE:

- VOLTAGE: 24VDC
 - STATIC TORQUE: 1.5Nm Min.
 - RATED CURRENT: 0.46A
 - POWER: 11W
 - RESISTANCE: 52 Ohms
 - START VOLTAGE: 22VDC MAX.
 - HI-POT: 500VAC/1S, 2mA
 - PERMANENT MAGNET BRAKE
- BROWN CONNECT +, THE BRAKE IS RELEASED;
 BROWN CONNECT -, THE BRAKE IS LOCKED.

MOTOR INTERFACE:



NOTE: THIS DRAWING HAS BEEN CREATED BY AUTOCAD. MANUAL REVISIONS ARE NOT ALLOWED.

MATERIAL		TOLERANCE UNLESS OTHERWISE SPECIFIED ISO 2768-1 MEDIUM			
DRAWN XXX	CHECKED	APPROVED - DATE	FILENAME	DATE xx/xx/xx	SCALE N/A
CYMATIX		BRAKE			SHEET 1/1
					BPC024-24-002