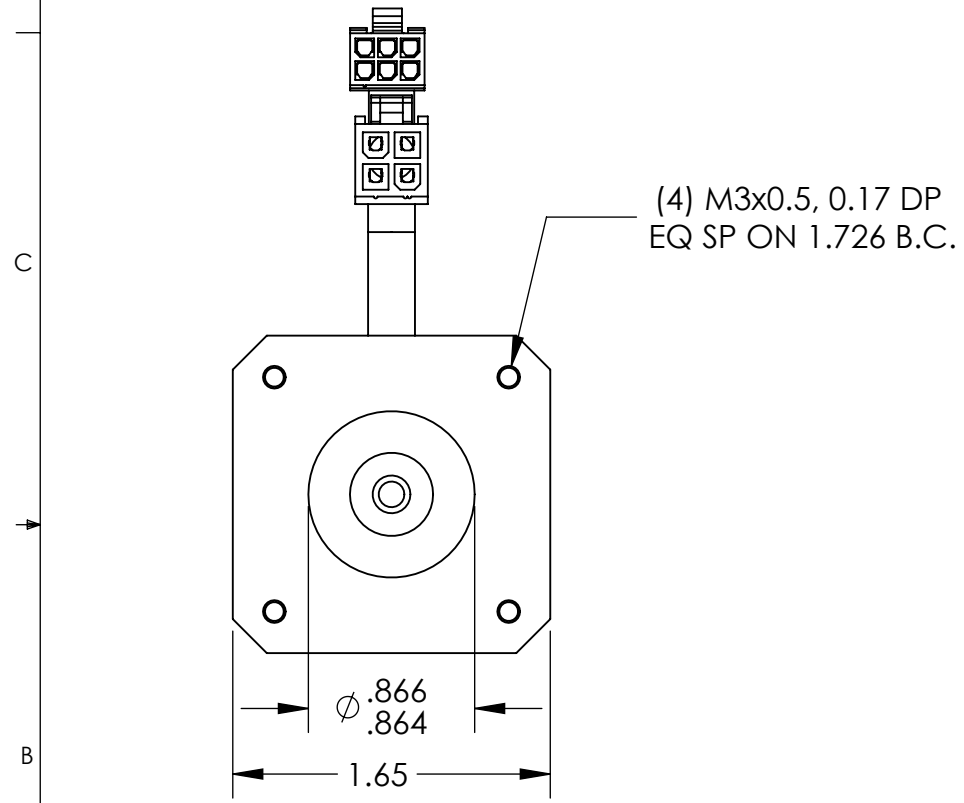


PART NUMBER
E017-XX-NXXXXX-NN-XXX

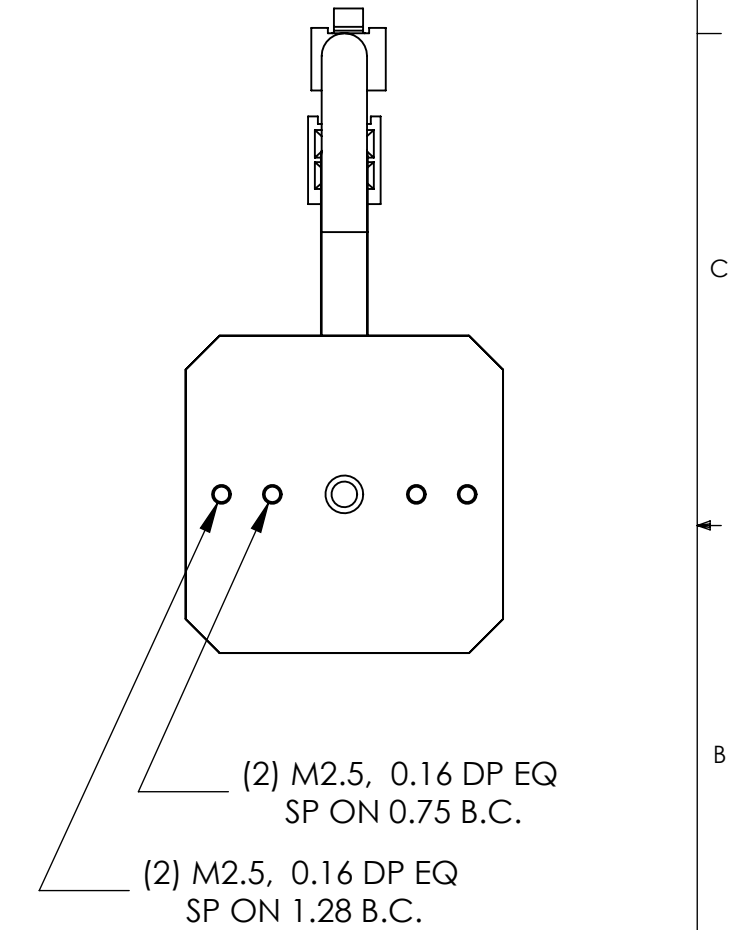
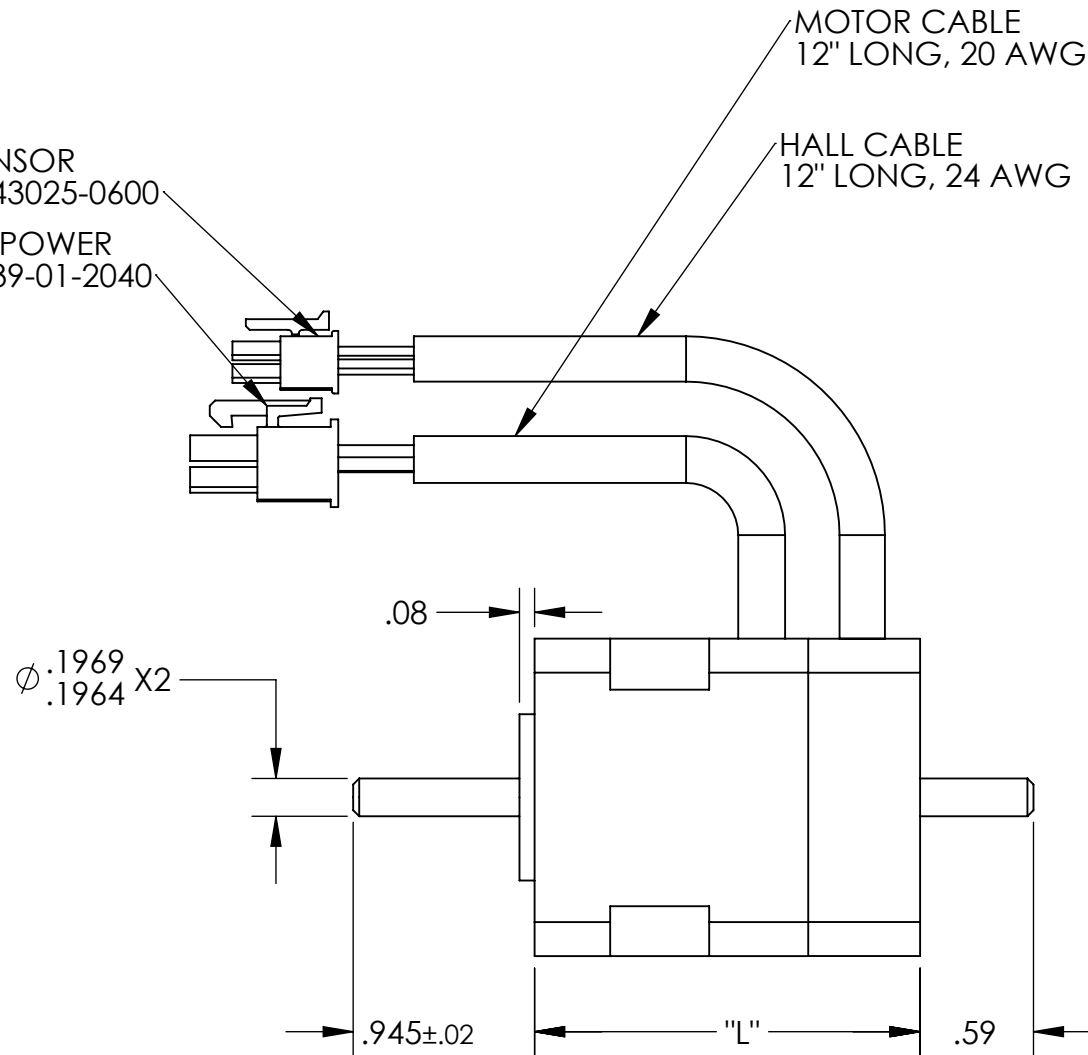
↑ ↑ ↑ ↑ ↑ ↑ ↑ ↑
SERIES STACK LENGTH WINDING LETTER ENCODER TYPE (N-NO ENCODER, M-MODULAR) ENCODER RESOLUTION (X5000) ENC COVER (N-NO COVER) CUSTOM BRAKE (N-NO BRAKE)

PART REVISION HISTORY

REV.	DESCRIPTION	ECO	DWN	CHKD	DATE



HALL SENSOR
MOLEX 43025-0600
MOTOR POWER
MOLEX 39-01-2040



MOTOR PARAMETERS		E017-1A	E017-2A	E017-3A
RATE SPEED	RPM	3000	3000	3000
RATED TORQUE	OZ-IN	14.2	28.4	42.6
PEAK TORQUE	OZ-IN	42.6	85.2	127.8
CONTINUOUS CURRENT	AMPS	2	3.9	6
PEAK CURRENT	AMPS	6	12	18
VOLTAGE CONSTANT, Ke	V/KRPM	5.8	5.8	5.8
TORQUE CONSTANT, Kt	OZ-IN/A	7.7	7.7	7.7
RESISTANCE	OHM	2.4	0.85	0.61
INDUCTANCE	mH	1.7	0.63	0.38
MOMENT OF INERTIA	Oz-In-Sec ²	0.0002	0.0004	0.0006
"L" LENGTH	INCH	2.1	2.7	3.5
WEIGHT	LBS	0.8	1.1	1.3

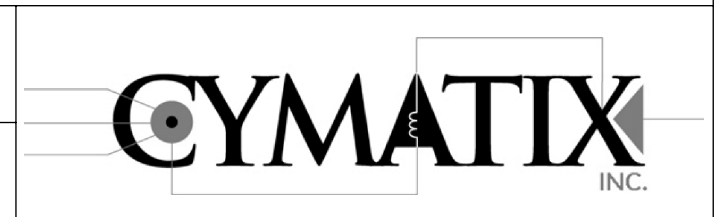
MOTOR CONNECTOR		
POS	COLOR	VALUE
1	YELLOW	PHASE R
2	GREEN	PHASE S
3	BLUE	PHASE T
4		

HALL CONNECTOR		
POS	COLOR	VALUE
1	RED	5VDC
2	BLACK	GND
3	YELLOW	HALL A
4	GREEN	HALL B
5	BLUE	HALL C
6		

NOTE: Kt AND Ke BASED ON TRAPEZOIDAL DRIVE
8 POLE DESIGN

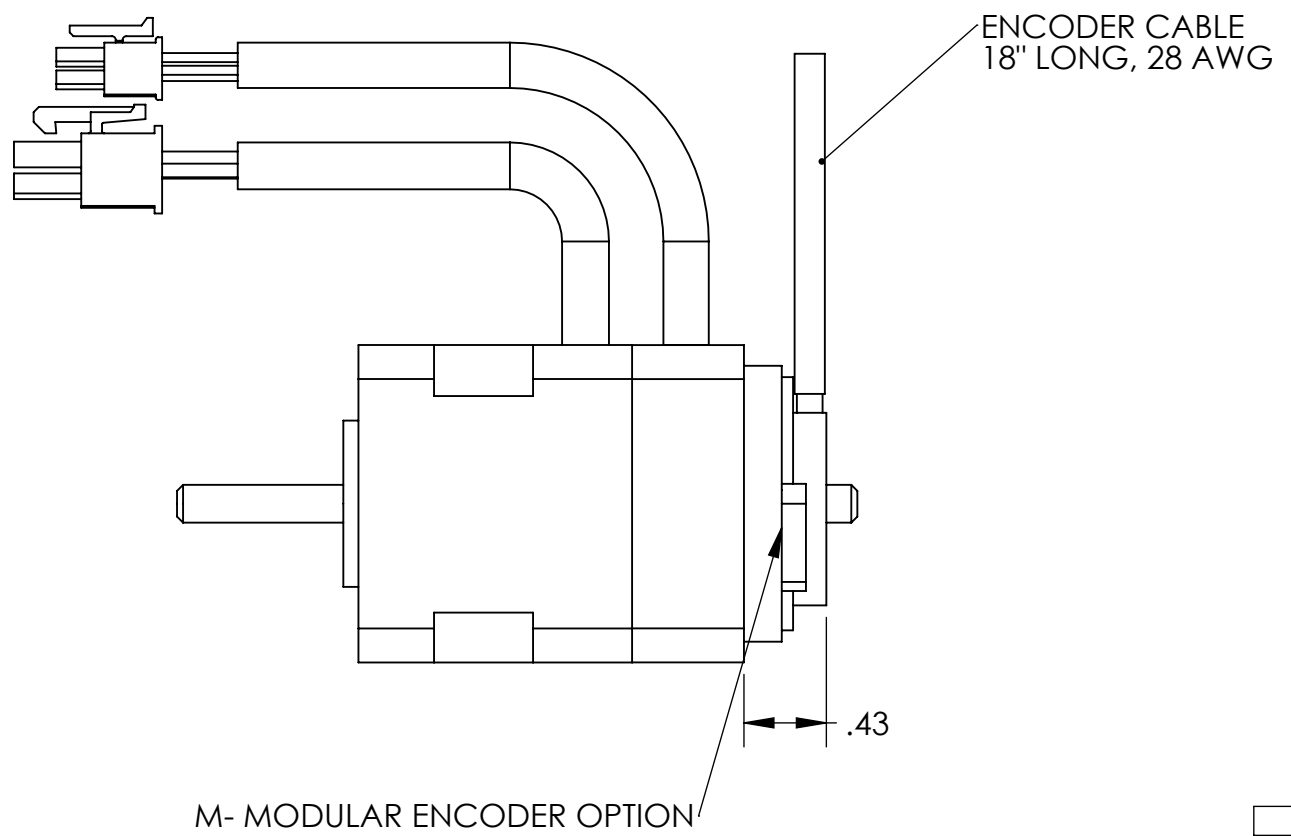
NOTICE ON REPRODUCTIONS
THIS DRAWING THE DESIGN AND THE PATENTS IT COVERS ARE THE PROPERTY OF CYMATIX, INC., OR THEIR CUSTOMERS. THEY WILL NOT BE REPRODUCED, COPIED, LOANED, EXHIBITED NOR USED EXCEPT IN THE LIMITED WAY AND THE PRIVATE USE PERMITTED BY THE CONSENT GIVEN BY THE LENDER TO THE BORROWER.

TOLERANCES UNLESS OTHERWISE SPECIFIED (U.O.S.)
 DECIMALS .XX = ± .01
 .XXX = ± .005
 .XXXX = ± .0005
 C'BREAKS .010/.020
 FILLETS .020 MAX
 FRAC. 1/64
 MACH. FIN. 125
 ANGLES 1°



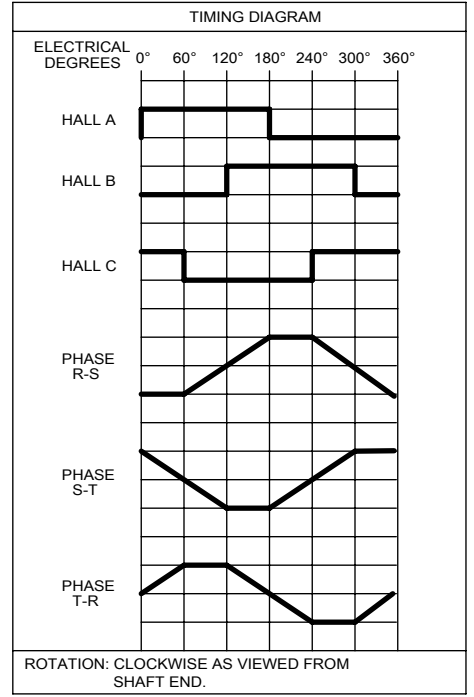
MATERIAL		TITLE: NEMA 17 BRUSHLESS DC MOTOR - ENCODER	
FINISH		PART NO. E017	
DRAWN JPB	DATE 06/10/14	SIZE B	PART REV. D
CHECKED TPB	DATE 06/10/14	SCALE: NONE	SHEET 1 OF 2
		DWG. NO. R	

PART REVISION HISTORY					
REV.	DESCRIPTION	ECO	DWN	CHKD	DATE



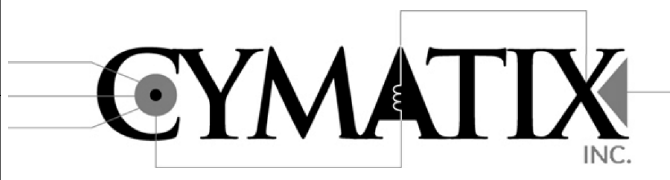
ENCODER WIRING	
COLOR	FUNCTION
RED	5 VDC
BLACK	COMMON
BROWN	CHANNEL A
WHITE	CHANNEL A/
BLUE	CHANNEL B
GREEN	CHANNEL B/
ORANGE	INDEX
YELLOW	INDEX /

ENCODER SPECIFICATIONS	
TYPE	OPTICAL
OUTPUT TYPE	LINE DRIVER
LINE COUNT	5000
GATED	A/B AT 90 DEGREE
INPUT VOLTAGE	5 VDC +/- 5%
CURRENT	65 mA TYPICAL



NOTICE ON REPRODUCTIONS
THIS DRAWING THE DESIGN AND THE PATENTS IT COVERS ARE THE PROPERTY OF CYMATIX, INC., OR THEIR CUSTOMERS. THEY WILL NOT BE REPRODUCED, COPIED, LOANED, EXHIBITED NOR USED EXCEPT IN THE LIMITED WAY AND THE PRIVATE USE PERMITTED BY THE CONSENT GIVEN BY THE LENDER TO THE BORROWER.

DECIMALS	C'BREAKS	FRAC.	MACH. FIN.
.XX = ± .01	.010/.020	1/64	125
.XXX = ± .005	FILLETS	ANGLES	1°
.XXXX = ± .0005	.020 MAX		



MATERIAL		TITLE: NEMA 17 BRUSHLESS DC MOTOR - ENCODER	
FINISH		PART NO. E017	
DRAWN JPB	DATE 06/10/14	SIZE B	PART REV. D
CHECKED TPB	DATE 06/10/14	SCALE: NONE	SHEET 2 OF 2
		DWG. NO. R	